



jordan fishwick

Peveril Gardens Disley Stockport



Peveril Gardens Disley Stockport SK12 2RG

Per Calendar Month £900 Per



The Property

Located on a sought-after modern development in Newtown Disley and within easy reach of Newtown Railway Station, this attractive two-bedroom first-floor flat is well presented throughout. Forming part of a small block of just four properties, the flat offers lovely open views, a convenient location, and the benefit of off-road parking. The accommodation comprises an entrance hall with first-floor landing, a bright living room, a modern re-fitted kitchen, two well-proportioned bedrooms, and a bathroom with a white suite. The property further benefits from PVC double glazing and gas central heating. Viewing essential!



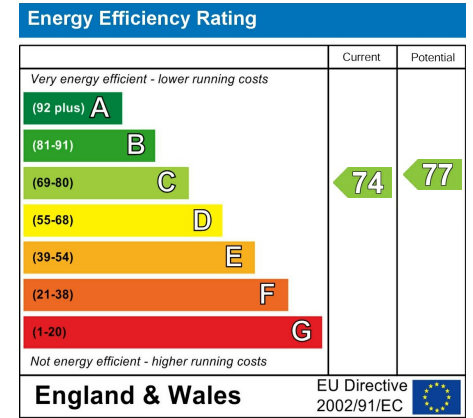
- Superb First Floor Flat
- Cul-de-sac Position
- Well Presented Throughout
- Open Front Views
- Off Road Parking for Two
- Re-fitted Kitchen
- Gas Central Heating and Pvc Double Glazing
- Private Entrance

Postcode SK12 2RG

EPC Rating C

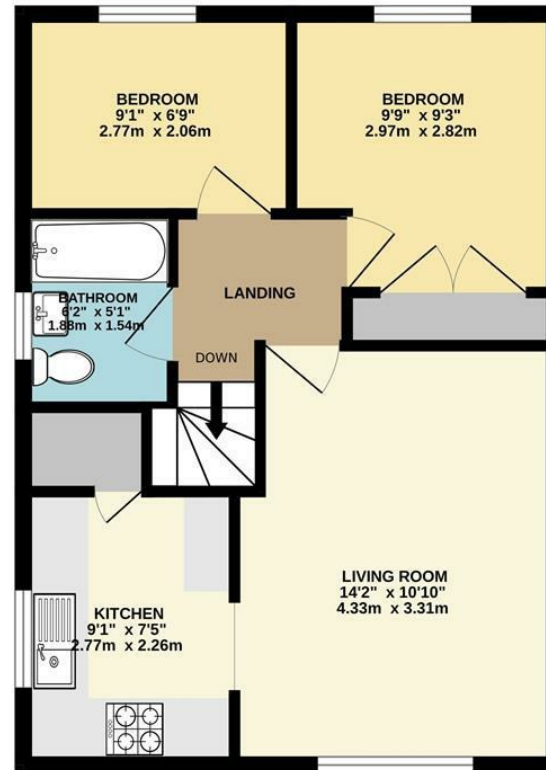
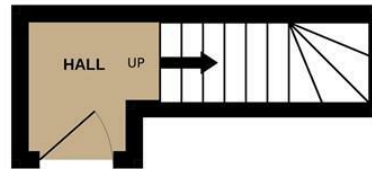
Local Authority Cheshire East

Council Tax B



GROUND FLOOR

1ST FLOOR



Whilst every attempt has been made to ensure the accuracy of the floorplan contained here, measurements of doors, windows, rooms and any other items are approximate and no responsibility is taken for any error, omission or mis-statement. This plan is for illustrative purposes only and should be used as such by any prospective purchaser. The services, systems and appliances shown have not been tested and no guarantee as to their operability or efficiency can be given.
Made with Metropix ©2025



These particulars are believed to be accurate but they are not guaranteed and do not form a contract. Neither Jordan Fishwick nor the vendor or lessor accept any responsibility in respect of these particulars, which are not intended to be statements or representations of fact and any intending purchaser or lessee must satisfy himself by inspection or otherwise as to the correctness of each of the statements contained in these particulars. Any floorplans on this brochure are for illustrative purposes only and are not necessarily to scale.

Offices at: Chorlton, Didsbury, Disley, Hale, Glossop, Macclesfield, Manchester Deansgate, Manchester Whitworth Street, New Mills, Sale, Wilmslow and Withington

14 Market St, Disley, Cheshire, Stockport SK12 2AA

01663 767878

disley@jordanfishwick.co.uk

www.jordanfishwick.co.uk