



Rochester Road

, Corby, NN18 8PN

£220,000



Rochester Road

, Corby, NN18 8PN

£220,000



Entrance all

6'2" x 3'6" (1.90m x 1.09m)

Entrance hall will door through to the lounge and also through to the guest cloakroom.

Double glazed window to side elevation.

Kitchen/Diner

14'0" x 8'0" (4.29m x 2.46m)

Fully fitted Kitchen/diner with access from the lounge and double glazed patio doors to the garden.

Kitchen is compiled of both eye level and low level units with oven, hob and extractor as standard.

Lounge

10'11" x 13'3" (3.35m x 4.06m)

Light and airy lounge with staircase rising to the first floor, access door to the kitchen and double glazed window to the front elevation.

Guest Cloakroom

6'2" x 2'7" (1.90m x 0.79m)

Guest WC with double glazed window to the front access and low level cistern and wash hand basin.

First floor landing.

Landing with access to the two double bedrooms and family bathroom.

Bedroom one.

14'1" x 11'3" (4.31m x 3.43m)

Double room with fitted wardrobes and storage cupboard and double glazed window to the front elevation.

Bedroom two.

7'8" x 10'0" (2.36m x 3.05m)

Double bedroom with double glazed window to the rear elevation.

Family Bathroom.

5'8" x 6'7" (1.75m x 2.01m)

Family bathroom with bath with shower over, low level cistern and wash hand basin, double glazed window to the rear elevation.

Outside

Front; small garden area with driveway to the side leading to a single garage and gate to the rear garden.

Rear; Patio area and then predominantly laid to lawn surrounded by timber fencing.



Road Map



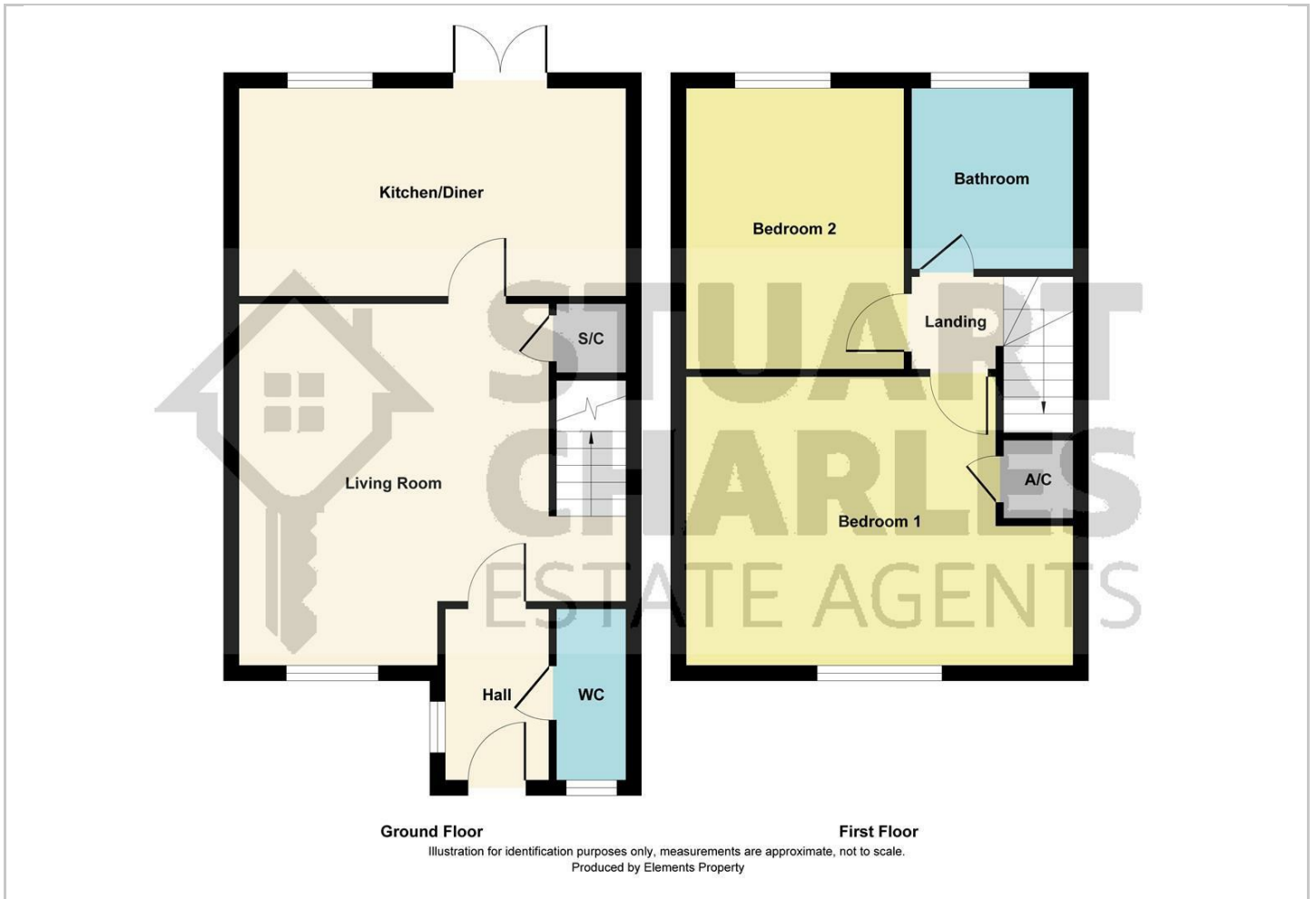
Hybrid Map



Terrain Map



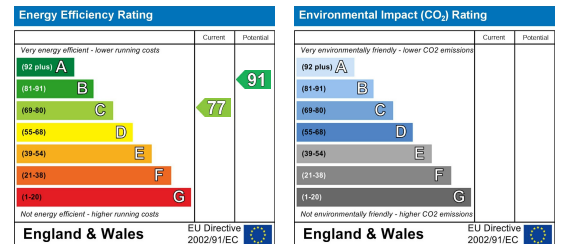
Floor Plan



Viewing

Please contact our Stuart Charles Estate Agents Office on 01536 234264 if you wish to arrange a viewing appointment for this property or require further information.

Energy Efficiency Graph



These particulars, whilst believed to be accurate are set out as a general outline only for guidance and do not constitute any part of an offer or contract. Intending purchasers should not rely on them as statements of representation of fact, but must satisfy themselves by inspection or otherwise as to their accuracy. No person in this firm's employment has the authority to make or give any representation or warranty in respect of the property.