



SCOTT WINDLE POWERED BY **exp** TM UK

@ [scott.windle@exp.uk.com](mailto:scott.windle@exp.uk.com)

[scottwindle.exp.uk.com](http://scottwindle.exp.uk.com)

📞 07838 311 550

# Bucklands Grove, Chippenham

Guide Price £250,000

🛏️ 2 🚿 1 🚗 1



Beautifully presented two bedroom home, built in 2013 by Princeton Homes and pleasantly situated within a small, exclusive cul de sac of just 13 properties.

Ideally located within easy reach of the town centre, mainline railway station and riverside countryside walks, this stylish home offers modern, light filled accommodation throughout.

The ground floor features an impressive open plan kitchen/living space, perfectly suited to modern family life and entertaining, with double doors opening directly onto the rear garden. The contemporary re-fitted kitchen is equipped with an integrated oven, hob and microwave, whilst a useful utility cupboard provides space for a washing machine. A downstairs cloakroom completes the ground floor accommodation.

To the first floor are two generous double bedrooms, both benefiting from built in wardrobes providing excellent storage, together with a modern family bathroom.

Externally, the property enjoys a pretty enclosed rear garden, laid mainly to lawn with a patio terrace and gated rear access. To the side is a driveway providing off street parking.

This fantastic home would make an ideal first time purchase, downsizing opportunity or investment property. Early viewing is highly recommended.

### Property Information

Freehold

Council Tax Band; B

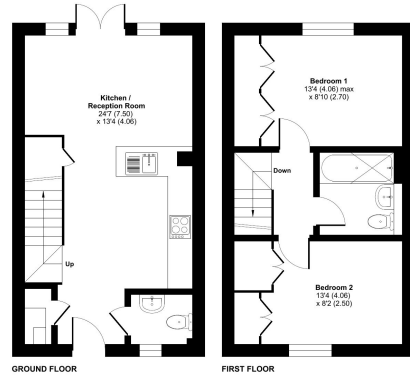
Gas Fired Central Heating

EPC Rating; C



**Bucklands Grove, Chippenham, SN15**

Approximate Area = 656 sq ft / 60.9 sq m  
For identification only - not to scale



These plans produced in accordance with RICS Property Measurement Standards incorporating the Standard Property Measurement System (SPMS) (November 2018). © Robinson 2020. Produced by eXp Agent (020) 882 1477778

- Please Quote Reference SW0341
- Built By Princeton Homes In 2013
- Easy Access To Town Centre & Mainline Railway Station
- Beautifully Presented & Improved Throughout
- Two Double Bedrooms With Built In Wardrobes
- Open Plan Kitchen / Living Area With Utility Cupboard
- Family Bathroom & Downstairs Cloakroom
- Good Size Garden With Patio Terrace
- Driveway Parking To Side
- Viewing Highly Recommended



79 84

eXp World UK Ltd is a registered company at Level 37, 25 Canada Square, London, E14 5LQ.

Registered company number is 12016573. VAT Registration Number is 327 4120 29