



# Egerton Gardens Mews, London SW3

Price £750 per week - Furnished







## Description

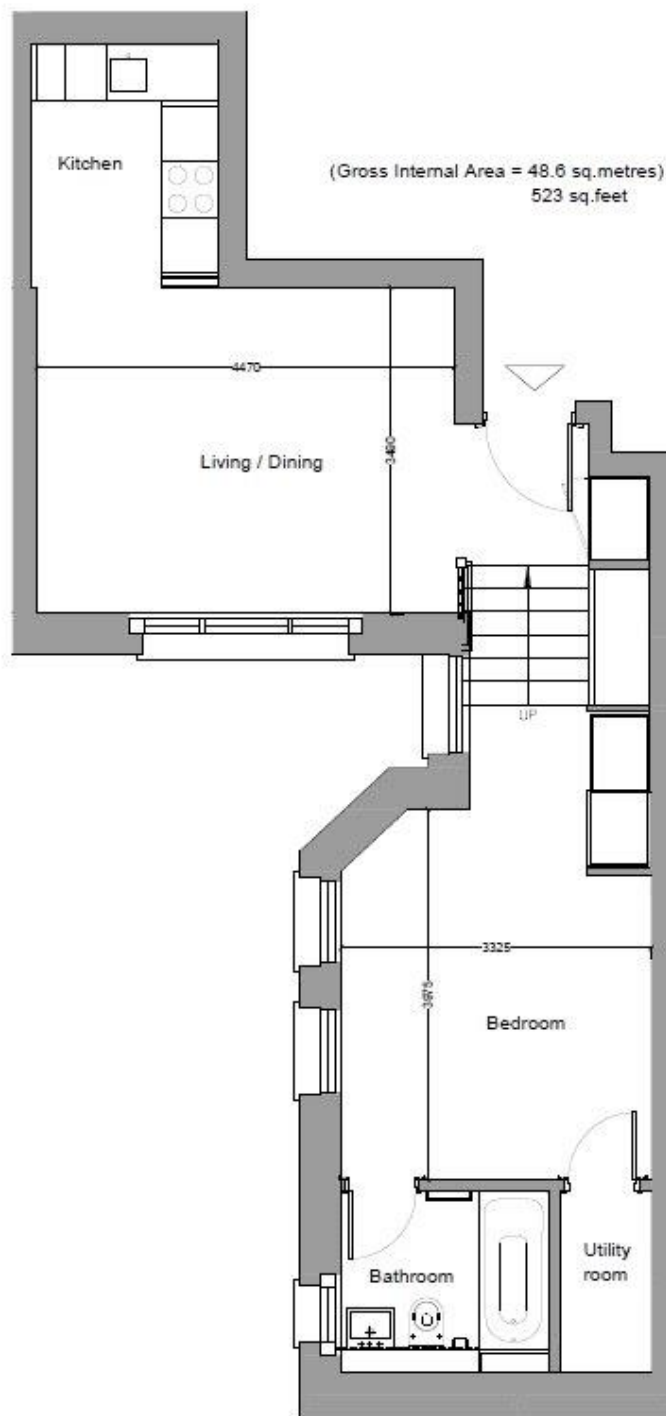
A superb third floor apartment (no lift) in this quiet mews in the heart of Knightsbridge. The property comprises one double bedroom, one bathroom, reception room with open plan kitchen and utility room. The flat is presented in excellent order and further benefits from wooden flooring in the reception room and contemporary furnishings. Egerton Gardens Mews is conveniently located moments from the many shopping and transport facilities of Knightsbridge and South Kensington.

Council tax band: D. Rent is payable on a monthly basis, and you may be required to pay more than a month's rent in advance for tenancies with annual rents exceeding £100,000. You will be required to pay a 1 week holding deposit following a successful offer. Tenancies with annual rents up to £50,000 will require a 5 weeks' security deposit, while those exceeding this threshold will require a 6 weeks' deposit. Utility bills, council tax, telephone line and broadband are not included in the rent. As well as paying the rent, you may also be required to make some additional permitted payments. If your tenancy does not qualify as an APT, additional fees may apply. Please visit [jll.co.uk/fees](http://jll.co.uk/fees) for details of fees that may be payable when renting a property. To check broadband and mobile phone coverage please visit Ofcom here [ofcom.org.uk/phones-telecoms-and-internet/advice-for-consumers/advice/ofcom-checker](http://ofcom.org.uk/phones-telecoms-and-internet/advice-for-consumers/advice/ofcom-checker)

- 1 Double bedroom
- 1 Bathroom
- Reception room
- Open plan kitchen
- Utility room
- Third floor
- Approx. 523 sq ft (48 sq m)
- Furnished
- EPC: C

# Floorplan

523 sq ft | 49 sq m



THIRD FLOOR



Chelsea  
2 Cale Street,  
London SW3 3QU  
+4420 7399 5010  
saleschelsea@jll.com

*Urban living, your way.*

[jll.co.uk/residential](http://jll.co.uk/residential)

© 2019 Jones Lang LaSalle IP, Inc. All rights reserved. All information contained herein is from sources deemed reliable; however, no representation or warranty is made to the accuracy thereof.

