



Sherriff Road, NW6

£999,950

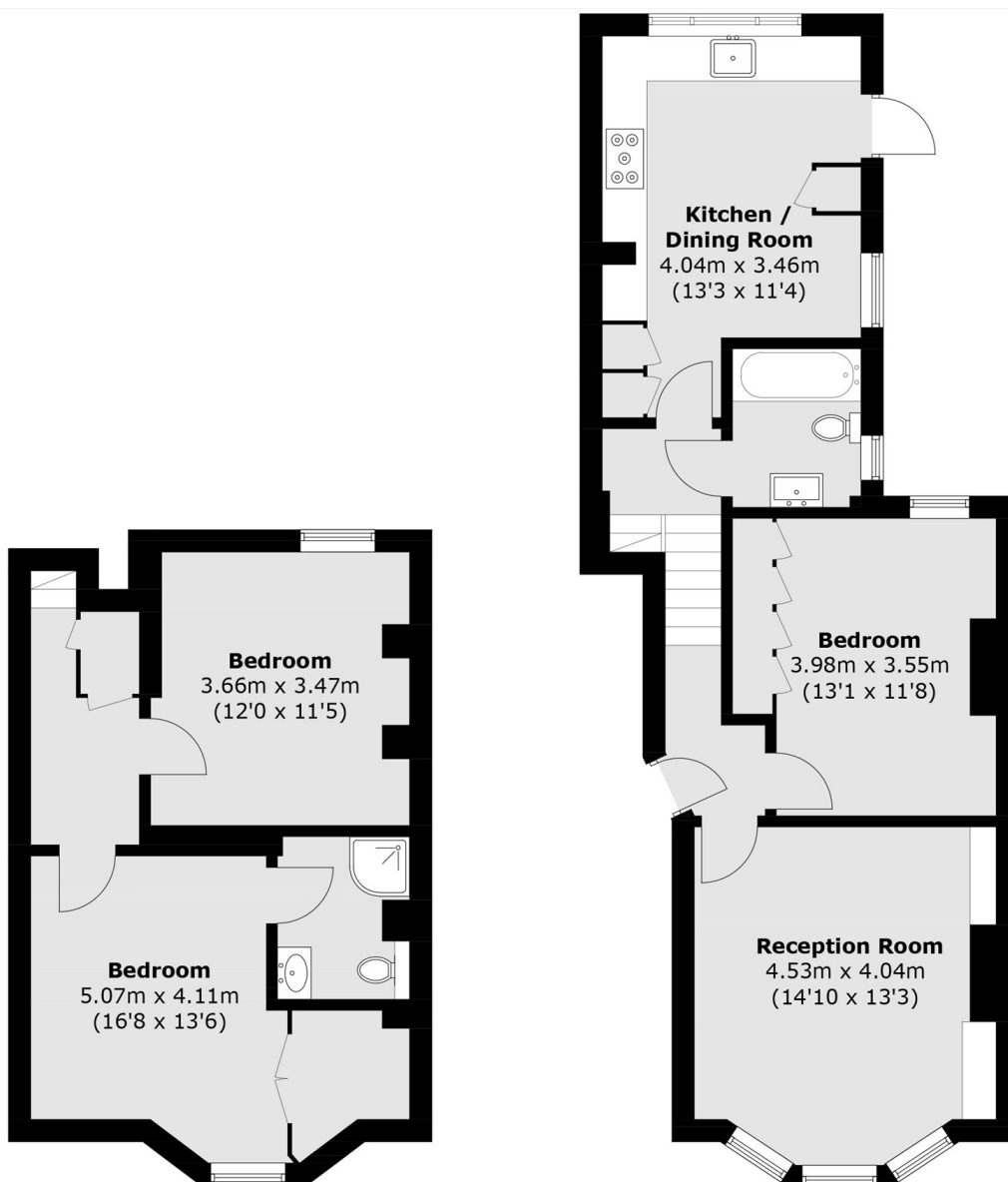
Stylish three-bedroom duplex in a beautifully converted Victorian building, offering two bathrooms, generous living space, and a blend of period charm with modern finishes, plus a private garden and share of freehold

Sherriff Road is ideally located just a short walk away from the variety of shops, restaurants and transport links that West End Lane has to offer. Transport links include West Hampstead underground, overground and Thameslink.

Features

- Three Bedrooms
- Private Garden
- Close To Station
- Victorian Conversion
- Share Of Freehold
- Two Bathrooms

Sherriff Road, London, NW6



Lower Ground Floor

Ground Floor

Total area (approx.): 96.8 sq. m (1,041.9 sq. ft)