



## QUEEN'S CLUB GARDENS, W14

£3,750 per week

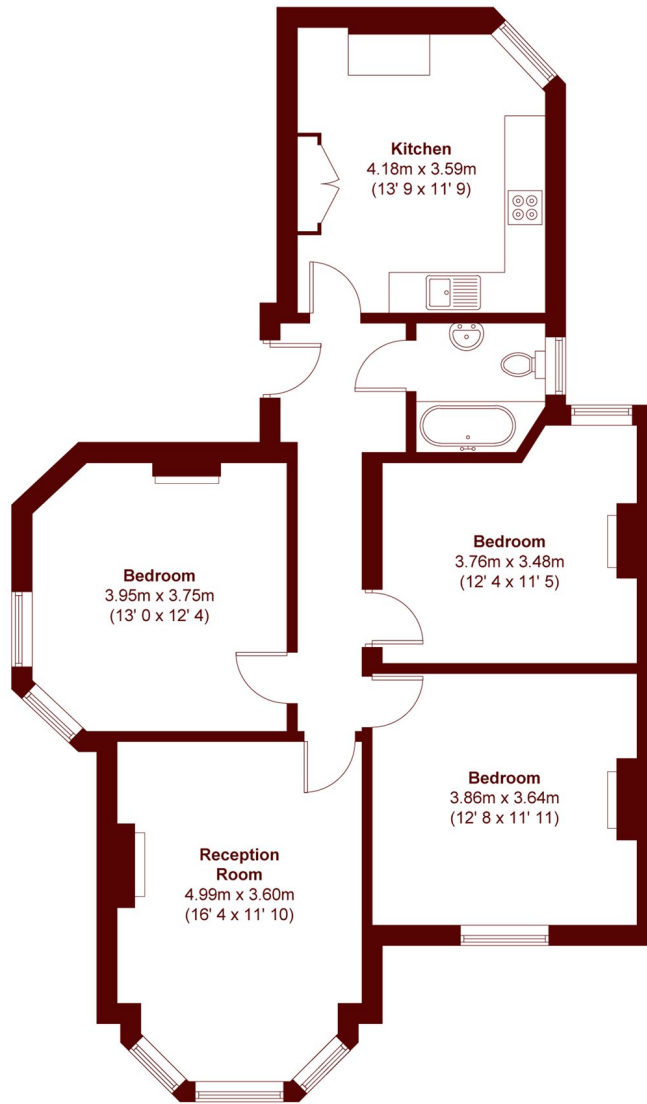
HMO Friendly

A well-presented three bedroom raised ground floor apartment set within

Three double bedrooms  
Queens club gardens  
porter

Lateral  
Tennis courts  
Energy rating d

# STEP INSIDE QUEEN'S CLUB GARDENS



Ground Floor

APPROX. GROSS INTERNAL FLOOR AREA  
944 SQFT / 87.7 SQM

Fulham  
020 7471 4520

Energy Rating: D We aim to make our particulars both accurate and reliable. However, they are not guaranteed; nor do they form part of an offer or contract. If you require clarification on any points then please contact us, especially if you're traveling some distance to view. Please note that appliances and heating systems have not been tested and therefore no warranties can be given as to their good working order

MARSH &  
PARSONS