



43 The Serpentine, Aughton

Ormskirk

Offers Over £300,000

# 43 The Serpentine

Aughton, Ormskirk

Council Tax band: D

Tenure: Freehold

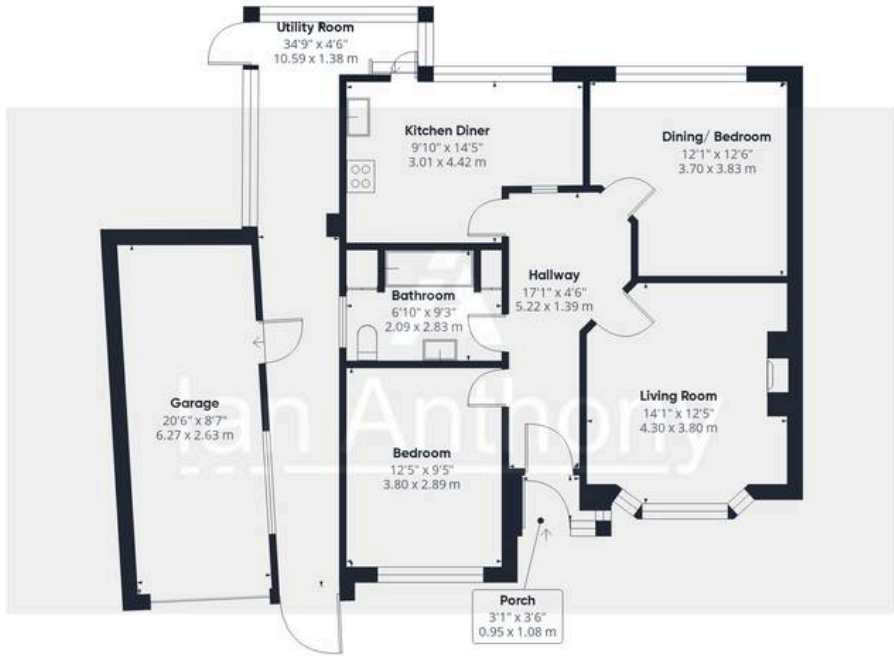
EPC Energy Efficiency Rating: D

EPC Environmental Impact Rating:

- Sought-after Serpentine location in Aughton
- Semi Detached bungalow with loft rooms and superb potential
- Elevated position with views towards Liverpool
- Loft area with multiple rooms, shower room and office space
- Excellent opportunity to create additional bedrooms (subject to permissions)







Ground Floor

Approximate total area<sup>(1)</sup>

1394 ft<sup>2</sup>  
129.5 m<sup>2</sup>

Reduced headroom

22 ft<sup>2</sup>  
2.1 m<sup>2</sup>



Floor 1

(1) Excluding balconies and terraces

Reduced headroom

----- Below 5 ft/1.5 m

Calculations reference the RICS IPMS 3C standard. Measurements are approximate and not to scale. This floor plan is intended for illustration only.

GIRAFFE360





## IAN ANTHONY

5 Burscough Street, Ormskirk - L39 2EG

01695580888

[enquiries@iananthonyestates.co.uk](mailto:enquiries@iananthonyestates.co.uk)

[iananthonyestates.co.uk/](http://iananthonyestates.co.uk/)

