





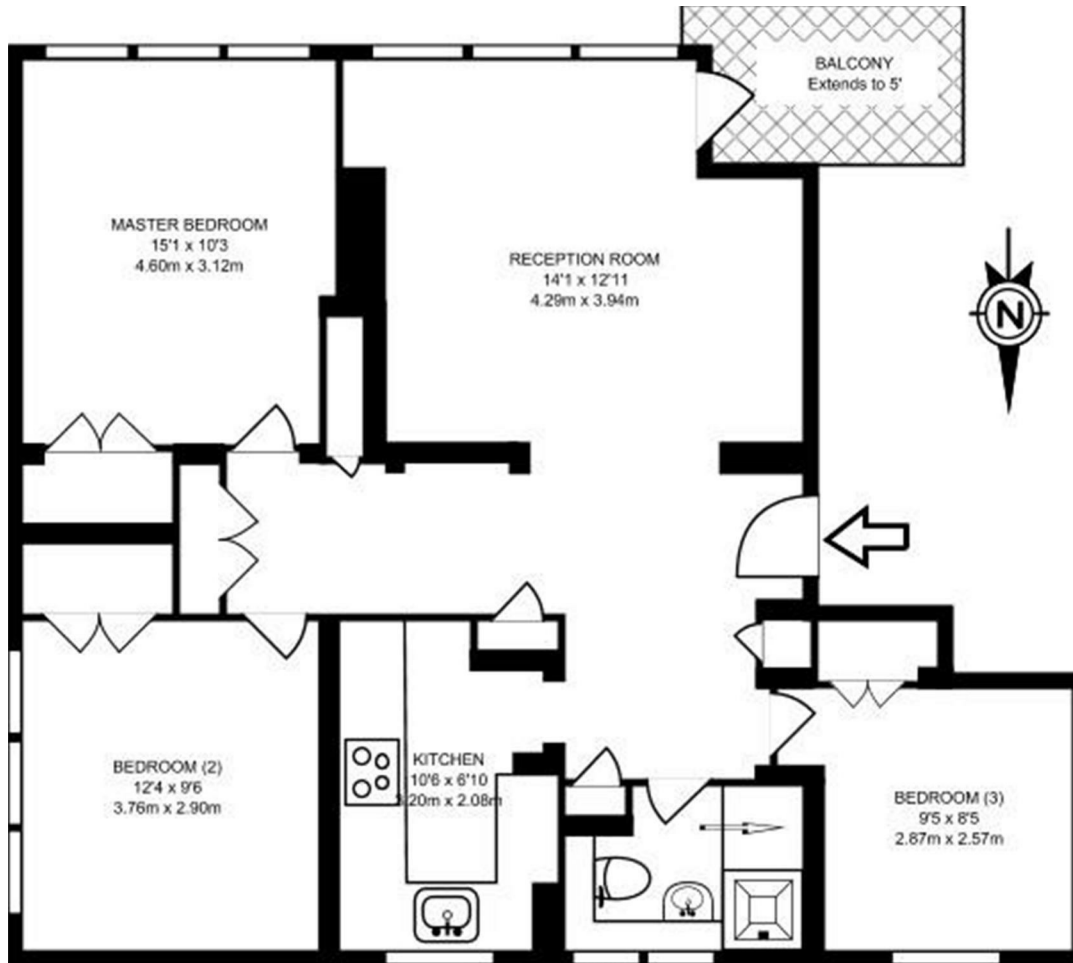


3 Bedrooms | 1 Receptions | 1 Bathrooms | EPC Current D

Helliwell & Co. are proud to present this well presented top floor, three bedroom flat, which is offered to the market furnished and is available early August. Bright and spacious throughout the property features a large reception with plenty of space for dining, a modern fitted kitchen, fully equipped with integrated appliances, three good sized double bedrooms, each with built in storage and a contemporary tiled bathroom. Further benefits include a private balcony, off-street parking and access to a communal garden. An ideal home for a family or professional sharers.

Elizabeth Gardens is located on a quiet residential street and is within reach of all the amenities of The Vale and Uxbridge Road with Acton Central Station (Overground) close by offering multiple bus routes to central London and the popular Westfield Shopping Centre. The leafy green open spaces of Acton Park are also just under half a mile away.

- Families or Professional Sharers
- Three Double Bedrooms
- Private Balcony
- Off Street Parking
- Security Deposit: £3,000.00 (5 weeks rent)
- Large Reception Room
- Separate Kitchen
- Access to Communal Gardens
- Holding Deposit: £600.00 (1 weeks rent)
- Council Tax Band C



SECOND FLOOR
752 SQ FT/69.86 SQ M

