



**34 Higher End, Weymouth, DT3 4EQ**  
Offers In Excess Of £150,000 Leasehold



## Higher End, Chickerell , Weymouth

1 Bedroom, 1 Bathroom

Offers In Excess Of £150,000

- No Onward Chain
- Self Contained Maisonette
- Private Garden
- Allocated Parking
- Close to Amenities
- £90 per annum Service Charge

Nestled in a quiet cul-de-sac in the desirable village of Chickerell, with a range of local amenities nearby-including a convenience store, public house, restaurant, and a regular bus route to Weymouth Town Centre-this well-presented one-bedroom first floor maisonette offers an ideal opportunity for anyone seeking a cosy and low-maintenance home.



Benefiting from its own private entrance, the property features a useful storage cupboard by the front door—perfect for coats, shoes, or gardening tools. Stairs lead up to the main accommodation, where a hallway provides access to an airing cupboard and further doors to all rooms.

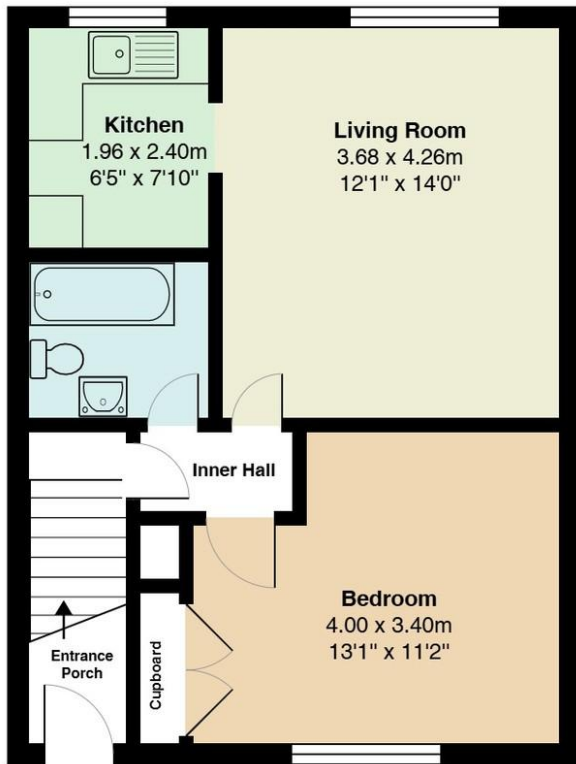
The apartment comprises a bright and spacious lounge, a generous double bedroom with fitted wardrobes, and a bathroom fitted with a white suite. The kitchen is accessed via the lounge and is equipped with fitted units, space for a cooker, and plumbing for a washing machine. Loft access is also available, providing additional storage options.

Outside, the property enjoys a private front garden, laid mainly to lawn, is nearby to the outside communal drying area, and an allocated parking space.

This charming apartment would make a perfect first home, downsize, or investment opportunity for anyone looking for a peaceful retreat in a well-connected location.







All measurements are approximate and for display purposes only

## Martin & Co Weymouth

2 St Thomas Street • Weymouth • DT4 8EW  
 T: 01305775504 • E: weymouth@martinco.com

# 01305775504

<http://www.martinco.com>



**Accuracy:** References to the Tenure of a Property are based on information supplied by the Seller. The Agent has not had sight of the title documents. A Buyer is advised to obtain verification from their Solicitor. Items shown in photographs including but not limited to carpets, fixtures and fittings are not included unless specifically mentioned within the sales particulars. They may however be available by separate negotiation. Buyers must check the availability of any property and make an appointment to view before embarking on any journey to see a property. No person in the employment of the agent has any authority to make any representation about the property, and accordingly any information given is entirely without responsibility on the part of the agents, sellers(s) or lessors(s). Any property particulars are not an offer or contract, nor form part of one. **Sonic / Laser Tape:** Measurements taken using a sonic / laser tape measure may be subject to a small margin of error. **All Measurements:** All Measurements are Approximate. **Services Not tested:** The Agent has not tested any apparatus, equipment, fixtures and fittings or services and so cannot verify that they are in working order or fit for the purpose. A Buyer is advised to obtain verification from their Solicitor or Surveyor.

