



Sydenham Road North, Cheltenham, GL52
£170,000

**ADAM
HALLIWELL**
property

exp ^{UK}

Bedrooms: 1

Bathrooms: 1

Receptions: 1

This well appointed first-floor Victorian flat offers spacious, light-filled rooms with period features and modern amenities, a generous double bedroom with walk-in closet, dedicated parking, and a prime location close to local amenities—ideal for first-time buyers or investors seeking convenience and charm with no onward chain.

Presenting a well presented first-floor flat, offered for sale with no onward chain, situated on an established Victorian road in a highly sought-after location. With its ideal proximity to local amenities – just a 12-minute walk (0.5 mile) to the bustling high street and a mere 5-minute stroll to the acclaimed La Boulangerie Artisan, renowned for its exceptional pastries and coffee – this property offers both convenience and lifestyle.

Blending period charm with functional modernity, this split level flat features a spacious reception room showcasing high ceilings, detailed ceiling features, natural wood floors, and large windows that provide an abundance of natural light and pleasant views to the front. The contemporary kitchen impresses with its own high ceiling, natural wood floors, and is fitted with a built-in oven, hob, and hood, ensuring an enjoyable cooking experience.

The double bedroom is complemented by a walk-in closet and captivating hill views, creating a restful and inviting retreat. The bathroom is finished with a shower over the bath, offering comfort and utility in equal measure.

Additional benefits include dedicated parking and a small area outside, ripe for clearance to become a garden if required. This area would be ideal for outdoor relaxation or further potential. The flat's period features are complemented by practical elements such as an EPC rating of D and inclusion in council tax band A, making it a cost-effective choice for discerning buyers.





Property Type: Flat

Presenting a well presented first-floor flat, offered for sale with no onward chain, situated on an established Victorian road in a highly sought-after location. With its ideal proximity to local amenities – just a 12-minute walk (0.5 mile) to the bustling high street and a mere 5-minute stroll to the acclaimed La Boulangerie Artisan, renowned for its exceptional pastries and coffee – this property offers both convenience and lifestyle.

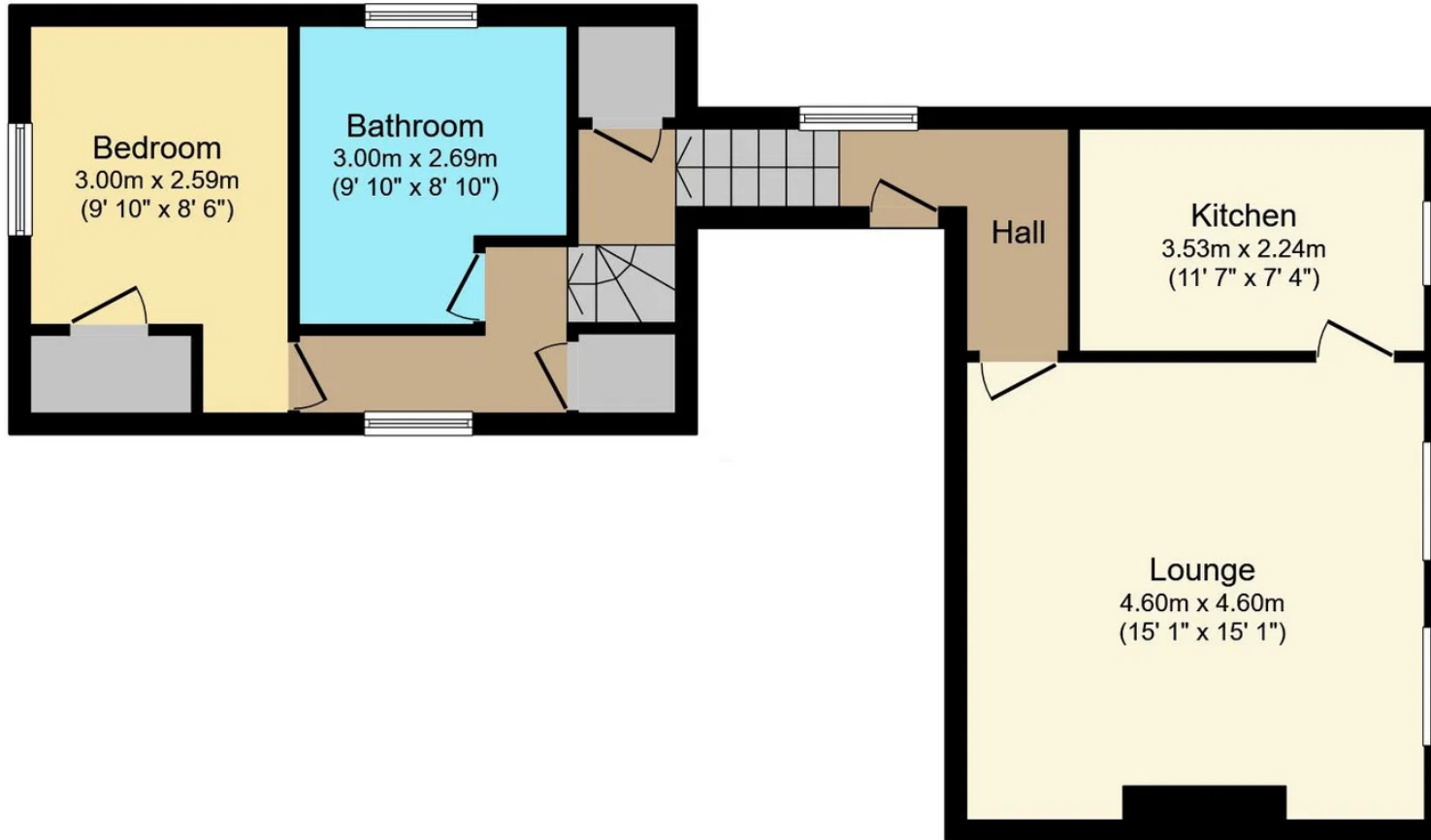
Blending period charm with functional modernity, this split level flat features a spacious reception room showcasing high ceilings, detailed ceiling features, natural wood floors, and large windows that provide an abundance of natural light and pleasant views to the front. The contemporary kitchen impresses with its own high ceiling, natural wood floors, and is fitted with a built-in oven, hob, and hood, ensuring an enjoyable cooking experience.

The double bedroom is complemented by a walk-in closet and captivating hill views, creating a restful and inviting retreat. The bathroom is finished with a shower over the bath, offering comfort and utility in equal measure.

Additional benefits include dedicated parking and a small area outside, ripe for clearance to become a garden if required. This area would be ideal for outdoor relaxation or further potential. The flat's period features are complemented by practical elements such as an EPC rating of D and inclusion in council tax band A, making it a cost-effective choice for discerning buyers.

Perfectly suited to first-time buyers looking for a stylish start or investors seeking an attractive addition to their portfolio, this exceptional flat offers a harmonious blend of classic elegance and contemporary convenience in a prime location. Early viewing is highly recommended to fully appreciate the unique appeal of this Victorian gem.





Floor Plan

Floor area 59.3 sq.m. (638 sq.ft.)

Total floor area: 59.3 sq.m. (638 sq.ft.)

This floor plan is for illustrative purposes only. It is not drawn to scale. Any measurements, floor areas (including any total floor area), openings and orientations are approximate. No details are guaranteed, they cannot be relied upon for any purpose and do not form any part of any agreement. No liability is taken for any error, omission or misstatement. A party must rely upon its own inspection(s). Powered by www.Propertybox.io

Sydenham Road North, Cheltenham, GL52

£170,000

**ADAM
HALLIWELL**
property

exp UK