



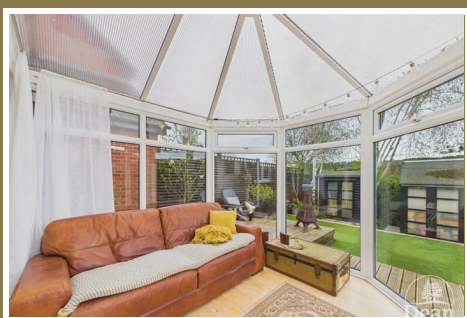
Grove Park

Whitecroft, Lydney, GL15 4SS

£395,000



Set in the highly sought-after village of Whitecroft, near Lydney, this impressive four-bedroom detached home offers the perfect blend of modern living and countryside charm. Beautifully presented throughout, the property boasts a sleek, contemporary interior with two reception rooms, making it ideal for families and professionals alike. The surrounding area is renowned for its tranquil woodland setting within the Forest of Dean, offering scenic walks, cycling routes, and a strong sense of community, while still providing convenient access to nearby amenities and transport links. Outside, the home continues to impress with its well-maintained gardens—perfect for relaxing, entertaining, or enjoying the peaceful surroundings.



Approached via:

A side pathway to UPVC double glazed door.

Entrance Hallway:

8'2 x 3'5 (2.49m x 1.04m)

Spacious entry way, single panelled radiator and stairs to first floor.

Dining Room:

11'3 x 8'9 (3.43m x 2.67m)

Base and wall mounted units, single panelled radiator and sliding double glazed doors to conservatory.

Kitchen:

8'4 x 8'3 (2.54m x 2.51m)

Range of base and eye level units, integrated oven, four ring gas hob, space for fridge freezer and washing machine, sink with drainer, cupboard housing boiler and UPVC double glazed window to rear aspect.

Conservatory:

9'2 x 9'6 (2.79m x 2.90m)

UPVC double glazed surround, power and lighting, double panelled radiator and patio doors to rear garden and decking.

Utility Room:

7'8 x 6'7 (2.34m x 2.01m)

Wall mounted cupboards, under counter space for tumble dryer and dishwasher, ceramic sink with mixer tap and double panelled radiator.

Living Room:

11'3 x 14'5 (3.43m x 4.39m)

Bright and spacious living room, TV point, single panelled radiator and large UPVC double glazed window to front aspect.

Office:

7'7 x 9'1 (2.31m x 2.77m)

UPVC double glazed window to front aspect and single panelled radiator.

Downstairs W/C:

4'11 x 2'9 (1.50m x 0.84m)

Wall mounted sink with wooden surround, W/C, single panelled radiator and frosted UPVC double glazed window to side aspect.

First Floor Landing:

14'0 x 6'0 (4.27m x 1.83m)

UPVC double glazed window, airing cupboard housing immersion heater and access to loft.

Bedroom One:

11'5 x 10'4 (3.48m x 3.15m)

Large double bedroom with built-in wardrobes, UPVC double glazed window to front aspect and single panelled radiator.

En-Suite:

5'6 x 4'9 (1.68m x 1.45m)

Wash hand basin with fitted storage, W/C, shower cubicle, heated towel rail and UPVC frosted double glazed window to side aspect.

Bedroom Two:

9'9 x 8'9 (2.97m x 2.67m)

Double bedroom with built-in wardrobes, single panelled radiator and UPVC double glazed window to rear aspect.

Bedroom Three:

7'9 x 8'10 (2.36m x 2.69m)

UPVC double glazed window to rear aspect, single panelled radiator and built-in wardrobe.

Bedroom Four:

8'4 x 7'5 (2.54m x 2.26m)

UPVC double glazed window to front aspect and single panelled radiator.

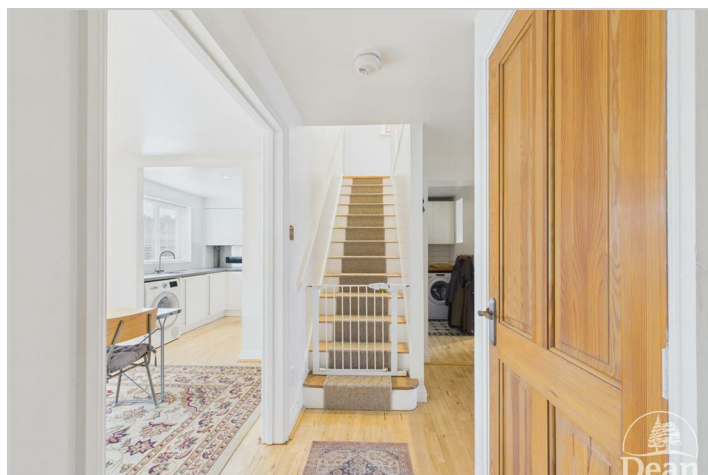
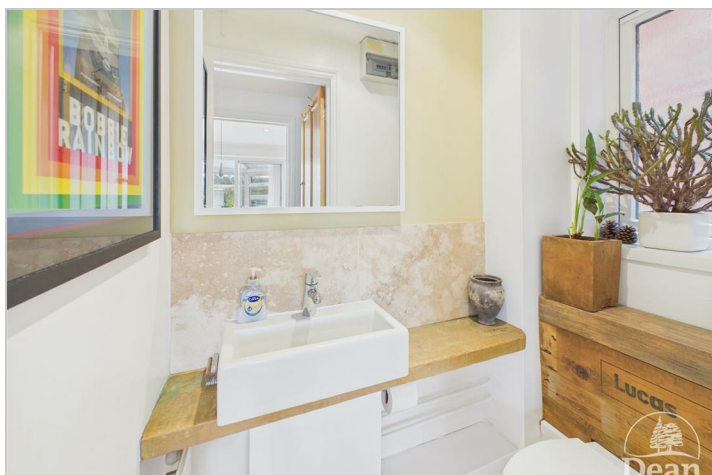
Family Bathroom:

5'5 x 5'8 (1.65m x 1.73m)

Modern bathroom fitted with a bath, W/C, free standing sink, heated towel rail and UPVC frosted double glazed window to side aspect.

Rear Garden:

The well-maintained rear garden features a generous wraparound decking area, complete with outdoor power sockets and convenient side access. Beyond this, you'll find a neatly presented AstroTurf section and two substantial storage sheds. The garden is further enhanced by beautiful, far-reaching views across the surrounding countryside.



Consumer Notes: Dean Estate Agents Ltd have prepared the information within this website/brochure with care and co-operation from the seller. It is intended to be indicative rather than definitive, without a guarantee of accuracy. Before you act upon any information provided, we request that you satisfy yourself about the completeness, accuracy, reliability, suitability or availability with respect to the website or the information, products, services, or related graphics contained on the website for any purpose.

These details do not constitute any part of any Offer, Contract or Tenancy Agreement.

Photographs used for advertising purposes may not necessarily be the most recent photographs, although every effort is made to update photographs at the earliest opportunity. Any reliance you place on such information is therefore strictly at your own risk. All photographic images are under the ownership of Dean Estate Agents Ltd and therefore Dean Estate Agents retain the copyright. You must obtain permission from the owner of the images to reproduce them.

Tenanted Property – we are not always able to show the most recent condition of a property due to tenants' privacy and we may choose to show the photographs of the property when it was last vacant to at least allow clients some idea of the internal condition. Therefore, we would of course, urge you to view before making any decisions to purchase or rent the property and before any costs.

Energy Performance Certificates are supplied to us via a third party and we do not accept responsibility for the content within such reports.

PRC Certificates – Some ex-local authority properties have been repaired in recent years using the PRC Scheme wherein a certificate has been produced by a qualified property engineer. This certificate does not imply the suitability for a mortgage approval and you must satisfy yourself of the work carried out that may meet your lenders criteria.

As with leasehold property or new build development sites, you are likely to be responsible for a contribution to management charges and/or ground rent or a contribution to the development service charge. Please enquire at the time of viewing.

You may also incur fees for items such as leasehold packs and, in addition, you will also need to check the remaining length of any lease before you complete a mortgage application form.

Please ask a member of our team for any help required before committing to purchase a property and incurring expense.

Road Map



Hybrid Map



Terrain Map



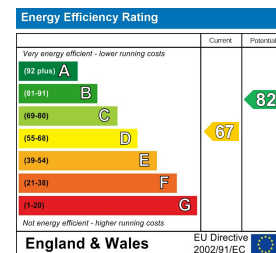
Floor Plan



Viewing

Please contact our Lydney Office on 01594 368202 if you wish to arrange a viewing appointment for this property or require further information.

Energy Efficiency Graph



These particulars, whilst believed to be accurate are set out as a general outline only for guidance and do not constitute any part of an offer or contract. Intending purchasers should not rely on them as statements of representation of fact, but must satisfy themselves by inspection or otherwise as to their accuracy. No person in this firm's employment has the authority to make or give any representation or warranty in respect of the property.