



Norman Road, SW19

£335,000

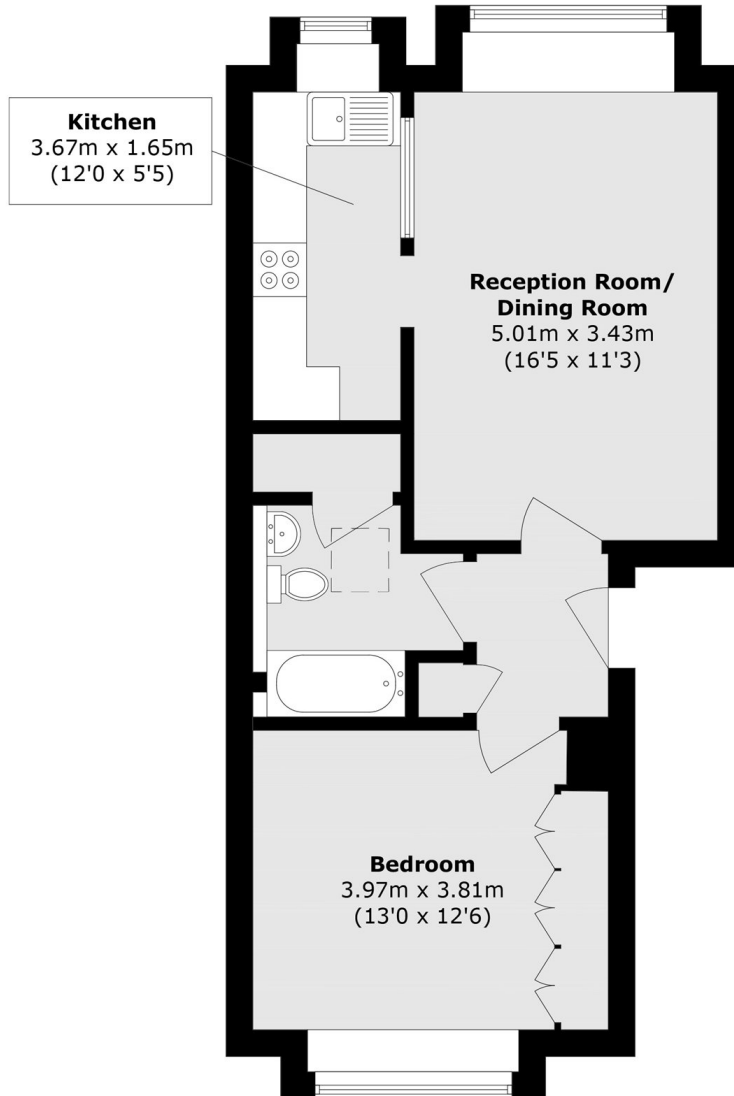
An exceptionally bright, top floor, one double bedroom, purpose built apartment. The property is presented in superb condition, with shutters, an allocated parking space, share off freehold and no onward chain.

Norman Road is a quiet residential street equidistant to Wimbledon Station and South Wimbledon station. Close to hand you'll find Wimbledon Broadway with its vast array of restaurants, bars, coffee shops and premium shopping facilities.

Features

Top Floor And Bright
Allocated Parking Space
Share Of Freehold
Refurbished Throughout
Close To Northern Line
No Onward Chain

Norman Road, London, SW19



Total area (approx.): 50.9 sq. m (547.9 sq. ft)