

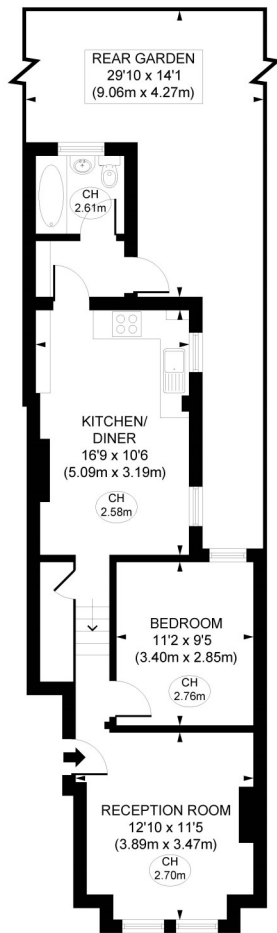
# Lochaline Street

Hammersmith, London, W6





LOCHALINE STREET, W6



GROUND FLOOR

APPROX. GROSS INTERNAL FLOOR AREA 543 sq. ft / 50.45 sq. m

Illustration for identification purposes only. Not to scale. Floor Plan Drawn According To RICS Guidelines.

## Lochaline Street

Hammersmith, London, W6

Price Guide: £485,000

A lovely one bedroom ground floor period flat with a private rear garden located on a popular residential road within the Crabtree Conservation Area. The flat is well presented throughout and comprises a 12'10 bay fronted living room, generous double bedroom, white bathroom suite and a spacious 16'9 x 10'6 kitchen breakfast room with ample space for a dining table.

The rear garden is ideal for entertaining and al fresco dining. Lochaline Street is superbly located, just 6 -7 minutes' walk to Hammersmith underground station and a stone's throw from the superb pubs and restaurants along the river which include, The Crabtree, River Café, Sam's Riverside, The Dove and the recently renovated Riverside Studios which boasts two cinemas, café, restaurant and art gallery. No onward chain.

Lovely one bedroom ground floor period flat in popular residential road

Crabtree Conservation Area | Bay fronted living room | Spacious kitchen/breakfast room | Bathroom

Private rear garden | Stones throw to the delights of River Thames path | No onward chain

Close to transport & numerous amenities | 543 Sq. Ft. (50.45 Sq. M.) Leasehold

All viewings by appointment through our **Hammersmith Office:**

T: 020 7385 7000  
E: [hammersmith@lawsonrutter.com](mailto:hammersmith@lawsonrutter.com)

192 Fulham Palace Road, London W6 9PA

In accordance with the Property Misdescription Act 1991, we wish to emphasise that the information given in these particulars is intended to help you decide whether you wish to view this property. Whilst every care is taken to ensure the accuracy of these particulars please note that all measurements are approximate and we are, for the accuracy of other information, reliant on what the seller has provided. We strongly recommend that you rely on your own inspections and those of your advisors to establish the details of any aspects which are of particular importance. Please note that we have not undertaken any survey of the property or the appliances within it and the buyer must rely on their own investigations prior to exchange of contracts.

