



Paddock Close, Beare Green

£285,000





“

A charming one-bedroom end-of-terrace home with a private garden, ideally suited to first-time buyers, downsizers or investors, set in a well-connected location close to local shops, a train station and Dorking.

”



A charming one-bedroom end-of-terrace home, ideally suited to first-time buyers, downsizers or investors, offering a wonderful opportunity to step onto the property ladder in a great location.

The property benefits from a light and airy living space along with a private garden, providing useful outdoor space and scope for personalisation. As an end-of-terrace home, it also enjoys a greater sense of privacy.

Conveniently positioned, the property is within easy reach of a nearby train station, providing excellent transport links, as well as a selection of local village shops for everyday essentials. The vibrant town of Dorking is just a short distance away, offering a wider range of amenities, restaurants.

An excellent opportunity in a sought-after area.

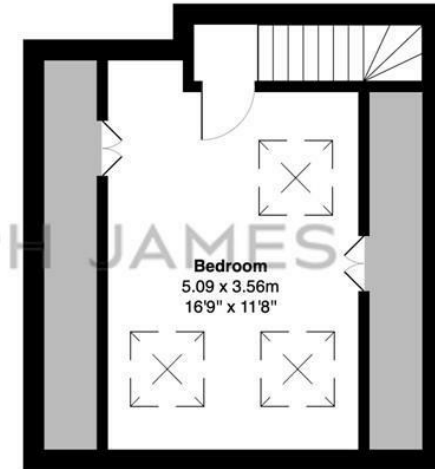


Need to know

- Charming one-bedroom home
- End-of-terrace
- Light, airy living space
- Private garden
- Ideal for first-time buyers
- Close to train station
- Near local village shops
- Short drive to Dorking
- Great investment opportunity
- Communal parking



Ground Floor



First Floor

Leith Lea, Paddock Close, Beare Green, Dorking

Total Area: 63.3 m² ... 681 ft²

FOR ILLUSTRATIVE PURPOSES ONLY.

Whilst every attempt has been made to ensure the accuracy of the floor plan shown, all measurements, positioning, fixtures, features, fittings and any other data shown are an approximate interpretation for illustrative purposes only and are not to scale.

No responsibility is taken for any error, omission, miss-statement or use of data shown.

The above statement applies to both 'Still Moving London LTD' and the Company or individual displaying this floor plan.

Unauthorised reproduction prohibited.

Â© Still Moving London LTD (www.stillmoving.london)



Interested?

dorking@ralphjames.co.uk
01306 284555

#

ralphjames.co.uk