



Shearwater Road, Hemel Hempstead, HP3 0GB

£575,000

Located in the desirable area of Shearwater Road, Hemel Hempstead, this charming townhouse offers a perfect blend of modern living and comfort. With four well-proportioned bedrooms, this property is ideal for families or those seeking extra space. The layout includes two inviting reception rooms, providing ample room for relaxation and entertaining guests. This home is not just a place to live; it is a sanctuary that offers both comfort and practicality. With its modern features and thoughtful design, it is sure to appeal to a wide range of buyers. Don't miss the opportunity to make this delightful townhouse your new home.

Entrance Hall



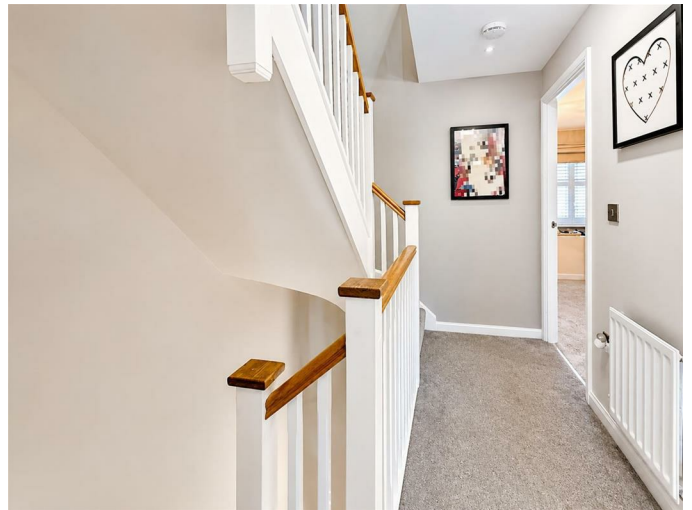
Downstairs Cloakroom



Fitted Kitchen



First Floor Landing



**Kitchen/Dining/Family Room 31'10 x 15'3
(9.70m x 4.65m)**



Living Room 15'3 x 13'2 (4.65m x 4.01m)



Bedroom Two 15'3 x 11'10 (4.65m x 3.61m)



Bedroom One 15'3 x 12'5 (4.65m x 3.78m)



Bathroom



En Suite



Second Floor Landing



Bedroom Three 11'9 x 7'9 (3.58m x 2.36m)



Bedroom Four 8'6 x 7'2 (2.59m x 2.18m)



Rear Garden



Garage and Driveway



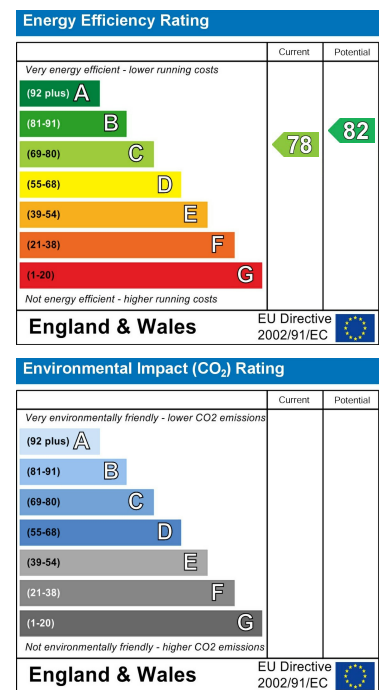
Floor Plan



Area Map



Energy Efficiency Graph



These particulars, whilst believed to be accurate are set out as a general outline only for guidance and do not constitute any part of an offer or contract. Intending purchasers should not rely on them as statements of representation of fact, but must satisfy themselves by inspection or otherwise as to their accuracy. No person in this firm's employment has the authority to make or give any representation or warranty in respect of the property.