



## Lexham Gardens, W8

£850,000

A large two double bedroom, two bathroom apartment arranged over two floors, with panoramic views from the private balcony and based on the sought-after Lexham Gardens, Kensington.

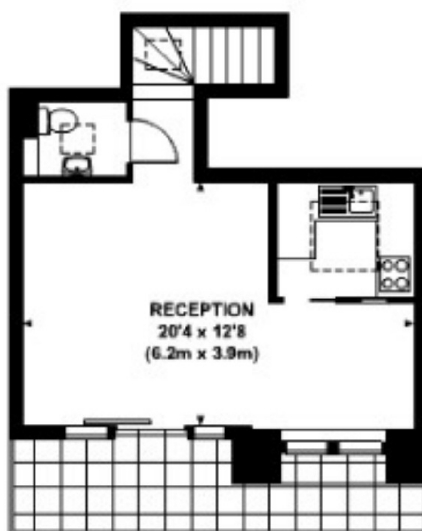
Located between Gloucester Road and Kensington High Street with a wide choice of shops and restaurants including Waitrose, Starbucks and Marks & Spencer.

### Features

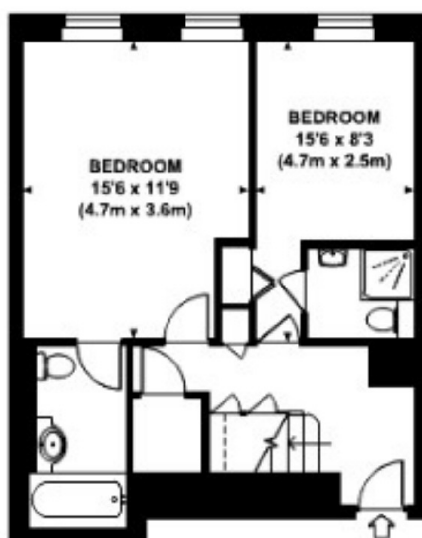
- Two Double Bedrooms
- Two Bathrooms
- Split Level
- Private Balcony
- Top Floor With Lift
- Neutral Decor

# Lexham Gardens, London, W8

Approx. gross internal area  
825 Sq Ft. / 72 Sq M.



FIFTH FLOOR



FOURTH FLOOR

## Dexters

South Kensington  
144 Old Brompton Road  
London  
SW7 4NR  
Sales  
0207 838 0108

Energy Rating: D. We aim to make our particulars both accurate and reliable. However they are not guaranteed; nor do they form part of an offer or contract. If you require clarification on any points then please contact us, especially if you're traveling some distance to view. Please note that appliances and heating systems have not been tested and therefore no warranties can be given as to their good working order.

 **RICS** | Regulated  
Estate Agent  
and Letting Agent

[dexters.co.uk](https://www.dexters.co.uk)