



The Byre Chesterfield Road

Matlock Moor, Matlock, DE4 5LZ

£1,700 PCM



The Byre Chesterfield Road

Matlock Moor, Matlock, DE4 5LZ

Delightful three bedroom cottage set in the grounds of a small hamlet of four properties at Cuckoostone Grange overlooking Matlock golf course and beautiful surrounding countryside. The Byre is a part furnished property and offers 1417 sqft over three floors. On the ground floor there is a cosy living room with stove and french doors opening on to the courtyard. Spacious dining area which leads into the well equipped kitchen. To the first floor there is a master bedroom with ensuite shower room and a further double bedroom and family bathroom. The top floor offers additional sitting/living room space and another double bedroom.

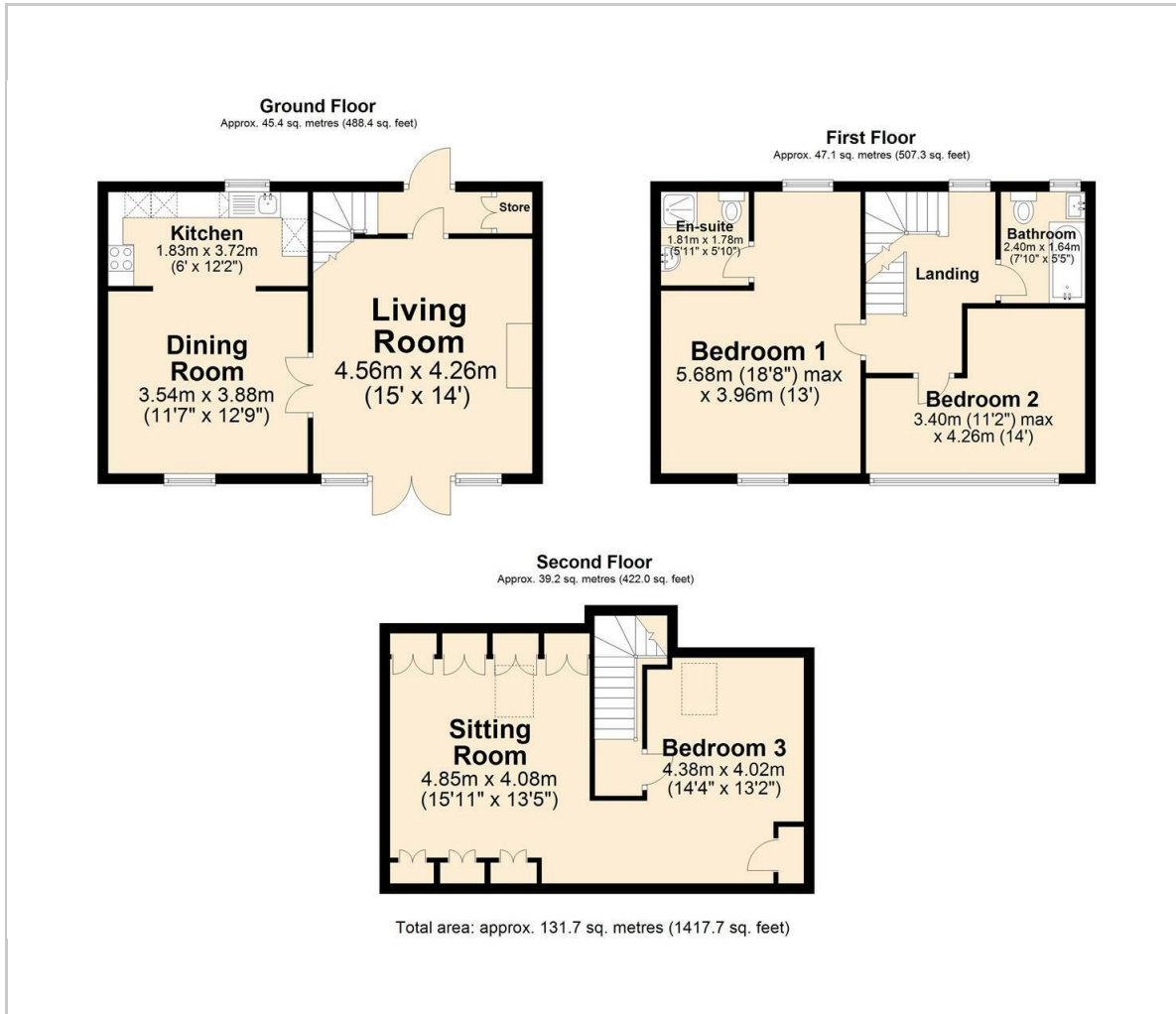
Two parking spaces to the front of the property in the shared courtyard and there is access to the garden to the rear of the property.

Rental information

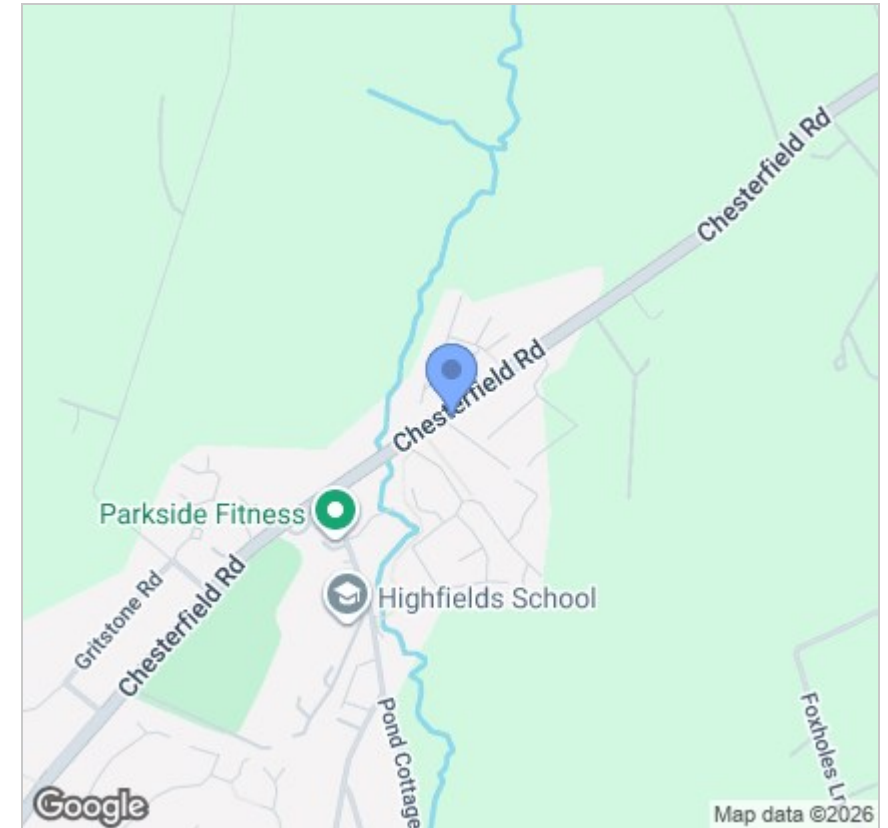




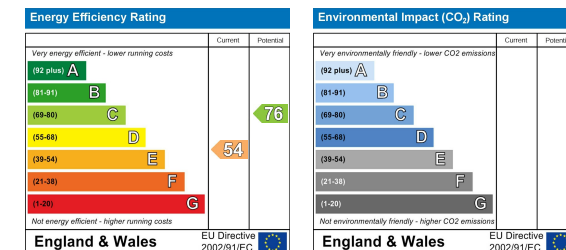
Floor Plan



Area Map



Energy Efficiency Graph



Viewing

Please contact our Chesterfield Office on 01246 567540 if you wish to arrange a viewing appointment for this property or require further information.

These particulars, whilst believed to be accurate are set out as a general outline only for guidance and do not constitute any part of an offer or contract. Intending purchasers should not rely on them as statements of representation of fact, but must satisfy themselves by inspection or otherwise as to their accuracy. No person in this firm's employment has the authority to make or give any representation or warranty in respect of the property.



131 Chatsworth Road, Chesterfield, Derbyshire, S40 2AP
T: 01246 567540



E: info@dalesandpeaks.co.uk
www.dalesandpeaks.co.uk