



**Oxford Road, Maidstone, Kent, ME15 8DJ**  
**Offers In The Region Of £350,000**



The property is situated in a lovely setting overlooking Mote Park on the Maidstone/Bearsted borders. The immediate area has excellent local amenities. The county town itself provides a wide range of shopping, educational and social facilities, together with two mainline stations.

The property comprises a very well presented three bedroom semi-detached family house with the property enjoying rendered elevations under a tiled roof and benefiting from gas fired central heating and replacement double glazing. The gardens are worthy of mention, a very good size, well-maintained and, as mentioned, a lovely outlook across to Mote Park itself where there are over 450-acres of amenity land available. Tenure: Freehold. EPC Rating: D. Council Tax Band: C.



## ACCOMMODATION

### Ground Floor:

Double glazed double entrance doors opening to ....

### Entrance Porch

Further entrance door to ...

### Entrance Hall

Staircase to first floor. Under stairs cupboard. Opening to ...

### Living Room

Sealed central fireplace. Double glazed windows to front elevation. Opening to ...

### Kitchen/Diner

A well-proportioned room with the KITCHEN AREA having an excellent range of work surfaces with cupboards and drawers under. Built-in wine rack. Inset one and a half bowl stainless steel sink unit with cupboard under. Induction hob with extractor fan over. Built-in Zanussi double oven and grill. Built-in microwave. Cupboard concealing Worcester gas fired boiler serving central heating and domestic hot water. Range of wall cupboards. The DINING AREA has a breakfast bar and double glazed double doors opening through to the garden.

### First Floor:

### Landing

Access to insulated roof space.

### Bedroom One

Double glazed window to front elevation with delightful outlook over Mote Park. Excellent range of mirror fronted wardrobe cupboards.

### Bedroom Two

Double glazed window to rear elevation.

### Bedroom Three

Double glazed window to front elevation with views.

### Family Bathroom

Panelled bath with mixer tap and shower attachment. Shower cubicle with thermostatically controlled shower. Low level WC. Pedestal wash hand basin. Chrome heated towel rail. Part tiled walls. Inset ceiling lighting. Double glazed window to side elevation.

### EXTERNALLY

The front of the property has a tarmacadam driveway for parking. A further shingled area. Side access leads to a very good sized garden extending in depth to approximately 90'. Immediately behind the house is a decked terrace leading onto an area of lawn with pathway leading down to a vegetable garden at the foot with a further stone laid seating area. Set in the garden is a fish pool with small water feature. Garden store (8'

x 5'6). Garden WC. Utility cupboard with light and power.


### VIEWING

Viewing strictly by arrangements with the Agent's Head Office: 52-54 King Street, Maidstone, Kent ME14 1DB. Tel: 01622 756703.

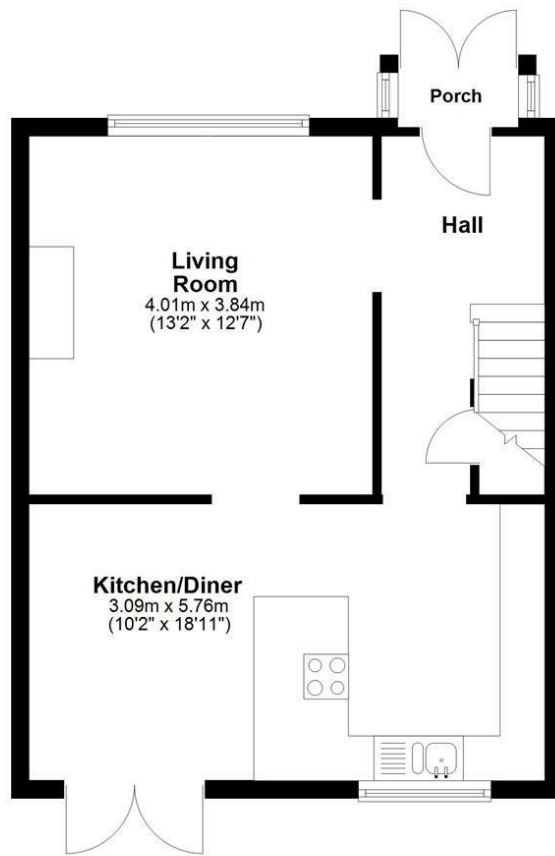
### DIRECTIONS

Leave Maidstone on the A20 Ashford Road and proceed towards Bearsted. Turn right at the traffic lights into Willington Street and continue on. Turn right into School Lane which leads into Oxford Road, where the property will be found on the left hand side overlooking Mote Park.

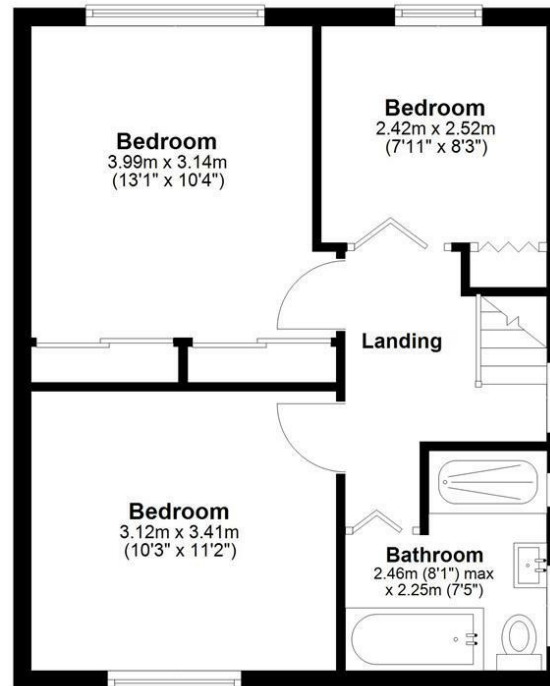
### Energy Efficiency Rating

	Current	Potential
<i>Very energy efficient - lower running costs</i>		
(92 plus) <b>A</b>		
(81-91) <b>B</b>		
(69-80) <b>C</b>		
(55-68) <b>D</b>	<b>67</b>	<b>73</b>
(39-54) <b>E</b>		
(21-38) <b>F</b>		
(1-20) <b>G</b>		
<i>Not energy efficient - higher running costs</i>		
<b>England &amp; Wales</b>	EU Directive 2002/91/EC	

## Ground Floor



## First Floor



Total area: approx. 83.9 sq. metres (903.0 sq. feet)

