



18 Milton Side, Aviemore – PH22 1AA

Aviemore

Offers Over £350,000





18 Milton Side

Aviemore, Aviemore

Modern three-bedroom home in Aviemore with open-plan living, ensuite principal bedroom, family bathroom, and outdoor space. Close to local amenities and Cairngorms National Park activities.

Council Tax band: E

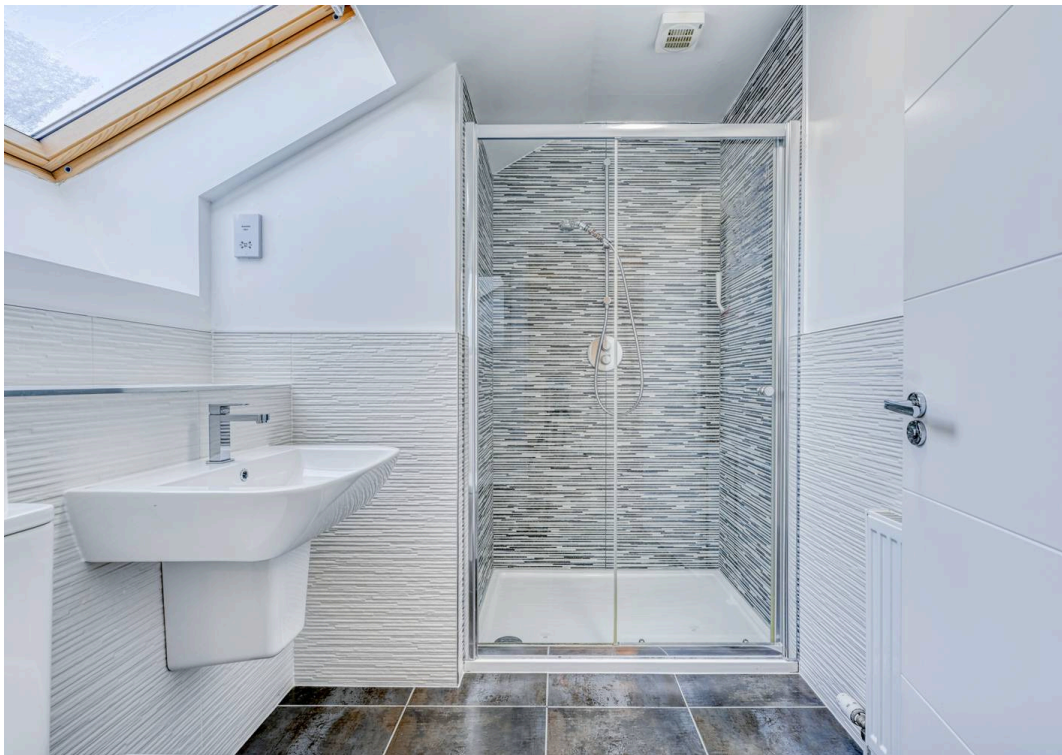
Tenure: Freehold

EPC Energy Efficiency Rating: B

EPC Environmental Impact Rating:

- Three well-proportioned bedrooms providing comfortable and flexible accommodation, each offering ample space for furnishings and natural light.
- Principal bedroom with ensuite shower room, creating a private and relaxing retreat.
- Modern family bathroom finished to a high standard, offering a stylish and functional space with quality fixtures and fittings to comfortably serve the remaining bedrooms and guests.
- Bright and spacious open-plan living area designed for modern lifestyles, providing a welcoming space for relaxing, dining, and entertaining, with large windows allowing natural light to flow.
- Located in the popular Highland town of Aviemore, a highly sought-after location in the heart of the Cairngorms National Park, offering a vibrant community, excellent amenities.
- Close to outdoor activities within the Cairngorms National Park, with easy access to skiing, mountain biking, hiking, water sports, and







home sweet home
estate agents
your local property experts