



Cleveland Street, W1T

£1,570 Per week

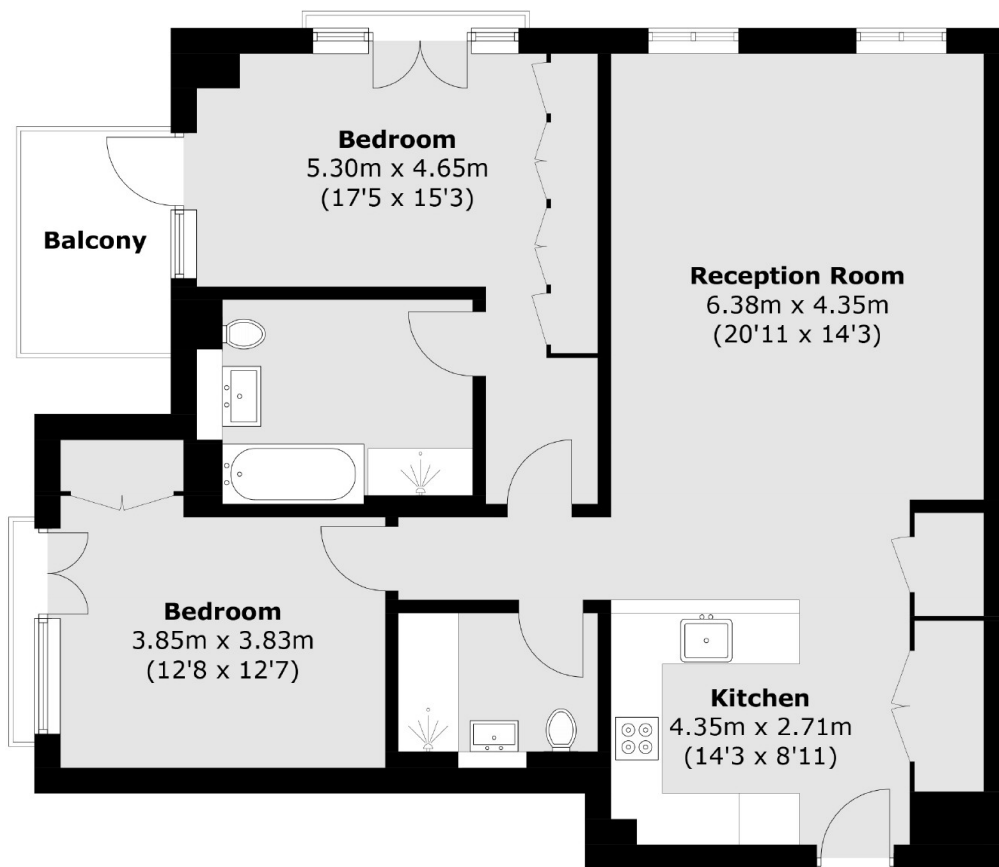
A two bedroom, two bathroom corner apartment with a balcony located in 101 Cleveland Street a recently completed residential led development in the heart of Fitzrovia.

Bordered by Oxford Street to the South, Regents Park to the North and Marylebone to the West, Fitzrovia is known for its village feel with world-class amenities and a range of restaurants on offer, for residents and visitors alike.

Features

Dedicated 24 hour Concierge
Main Bedroom with Balcony
En Suite Bath & Shower Room
Second Double Bedroom
Italian Designed Kitchen
Reception - Dining Room

Cleveland Street, London, W1T



Total area (approx.): 87.2 sq. m (938.6 sq. ft)
Balcony area: 4.5 sq. m (48.4 sq. ft)