



Richmond Road, Ecclestone

PR7 5SR





Occupying a generous plot with a large driveway providing ample off-road parking, this deceptively spacious dormer bungalow offers flexible accommodation, ideal for a range of buyers. Set back from the road behind a well-maintained front garden, the property enjoys excellent kerb appeal and a welcoming first impression. Accessed via the side entrance, you are welcomed into an exceptionally spacious hallway which currently accommodates both a home office area and piano space, creating a versatile central hub that connects the entire home. The living room is bright and inviting, featuring a bay window that floods the room with natural light and an electric fire creating a cosy focal point. The kitchen is well-equipped with a range of wall and base units, integrated fridge freezer, dishwasher, electric hob and double oven with grill, offering plenty of storage and workspace. Beyond the kitchen, the delightful sun room provides an additional reception area and a wonderful spot to relax whilst overlooking the garden. Also located on the ground floor is a generous double bedroom with views over the driveway and a beautifully appointed family bathroom comprising a large bath, walk-in shower with rainfall head, vanity hand basin and WC. To the first floor, the impressive principal bedroom benefits from a full run of fitted wardrobes and enjoys views over the rear garden, with ample space for a dressing area or reading corner. A further double bedroom also offers fitted wardrobes, whilst a separate WC, useful airing cupboard and loft access complete the accommodation. Externally, the former garage has been thoughtfully converted to create a substantial utility room and separate craft room, making it ideal for those working from home, pursuing hobbies or requiring workshop space. To the rear, the south-facing garden has been designed for low maintenance with attractive flagged patios, providing the perfect setting.



Occupying a generous plot with a large driveway providing ample off-road parking, this deceptively spacious dormer bungalow offers flexible accommodation, ideal for a range of buyers. Set back from the road behind a well-maintained front garden, the property enjoys excellent kerb appeal and a welcoming first impression.

Council Tax band: C

Tenure: Freehold

- Ground floor living available
- Low maintenance rear garden
- Good sized plot
- Utility and craft room

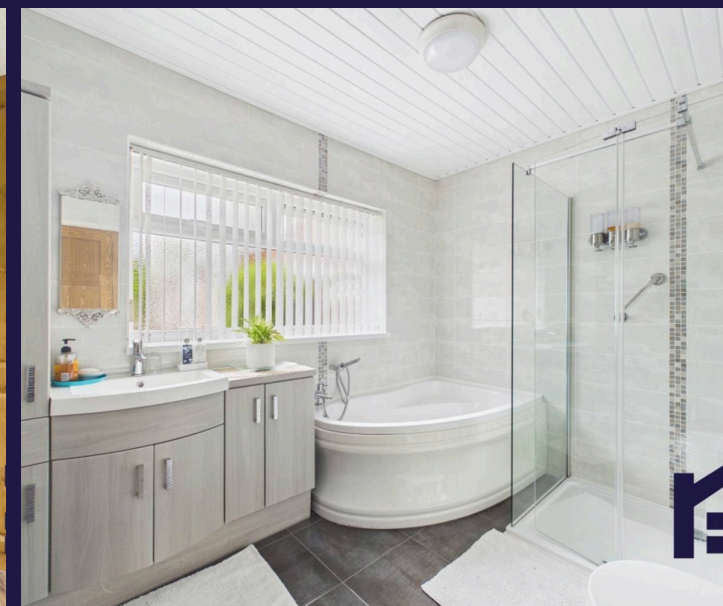
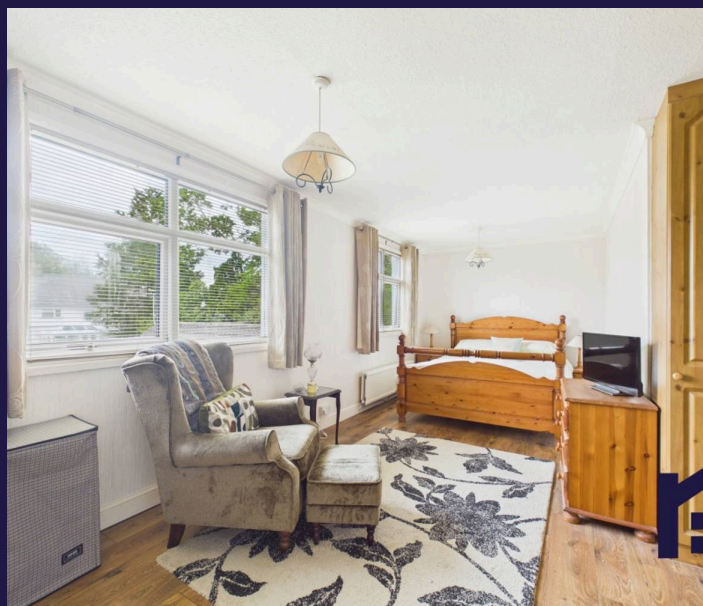


HOME  TRUTHS

Eccleston Branch
265 The Green, Eccleston, PR7 5TF
01257 451673

Coppull Branch
244 Spendmore Lane, Coppull, PR7 5DE
01257 794588

www.hometruthslancs.co.uk
office@hometruthslancs.co.uk





Floor 1 Building 1

Approximate total area⁽¹⁾

125.4 m²

1349 ft²

Reduced headroom

4.1 m²

44 ft²

(1) Excluding balconies and terraces

Reduced headroom

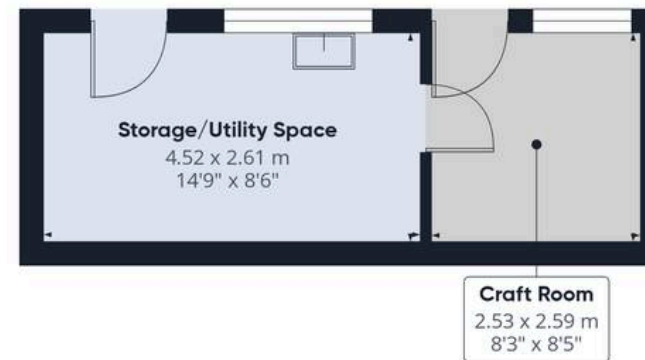
..... Below 1.5 m/5 ft

Calculations reference the RICS IPMS 3C standard. Measurements are approximate and not to scale. This floor plan is intended for illustration only.

GIRAFFE360



Floor 2 Building 1



Floor 1 Building 2