



Loxley Gardens Bulkington Avenue, Worthing
Worthing

£250,000



Loxley Gardens Bulkington Avenue

Worthing, Worthing

Spacious first floor flat with two double bedrooms, modern kitchen, parking, 144-year lease, share of freehold, near station and amenities. No onward chain. Early viewing advised.

Council Tax band: B

Tenure: Share of Freehold

EPC Energy Efficiency Rating: C

EPC Environmental Impact Rating:

- Spacious First Floor Flat in Period Building
- Two Double Bedrooms
- Spacious Entrance Hall/Dining Area
- Fully Tiled Bathroom Suite
- Modern Kitchen
- Allocated Parking Space
- 144 Year Lease Remaining and Share of Freehold
- Popular Location Close to Station and Local Amenities
- No Onward Chain
- Large Loft Area For Extra Storage



Entrance Hall

13' 1" x 7' 5" (3.99m x 2.25m)

The entrance hall is a fantastic size and works well as a dining area.

Living Room

15' 9" x 11' 4" (4.80m x 3.46m)

Light and airy living room with pleasant outlook.

Kitchen

8' 6" x 8' 3" (2.60m x 2.51m)

A good range of wall and base units and drawers, one and a half bowl sink drainer unit, integrated oven and gas hob, space for appliances.

Bedroom One

18' 9" x 9' 2" (5.71m x 2.80m)

A spacious double bedroom.

Bedroom Two

11' 10" x 11' 7" (3.61m x 3.53m)

A further good size double bedroom.

Bathroom

7' 6" x 4' 2" (2.28m x 1.28m)

Fully tiled white suite comprising p-shaped bath with shower over, WC, wash hand basin, tall chrome heated towel rail.



ALLOCATED PARKING

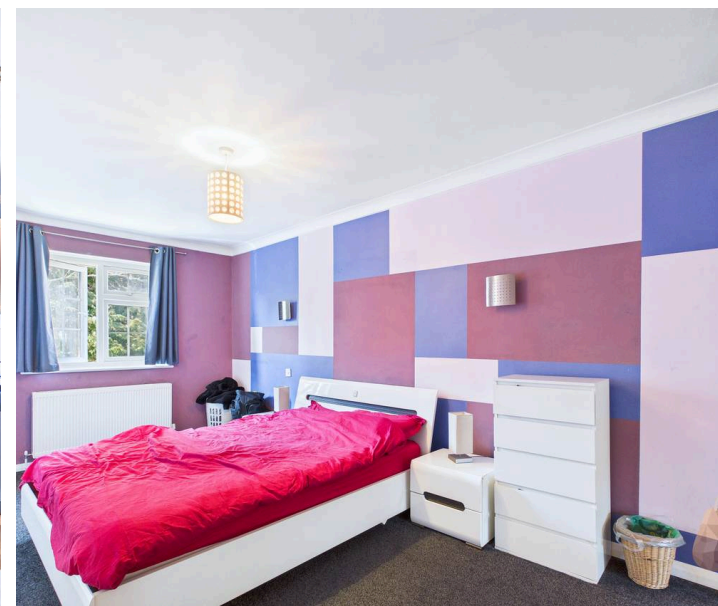
1 Parking Space

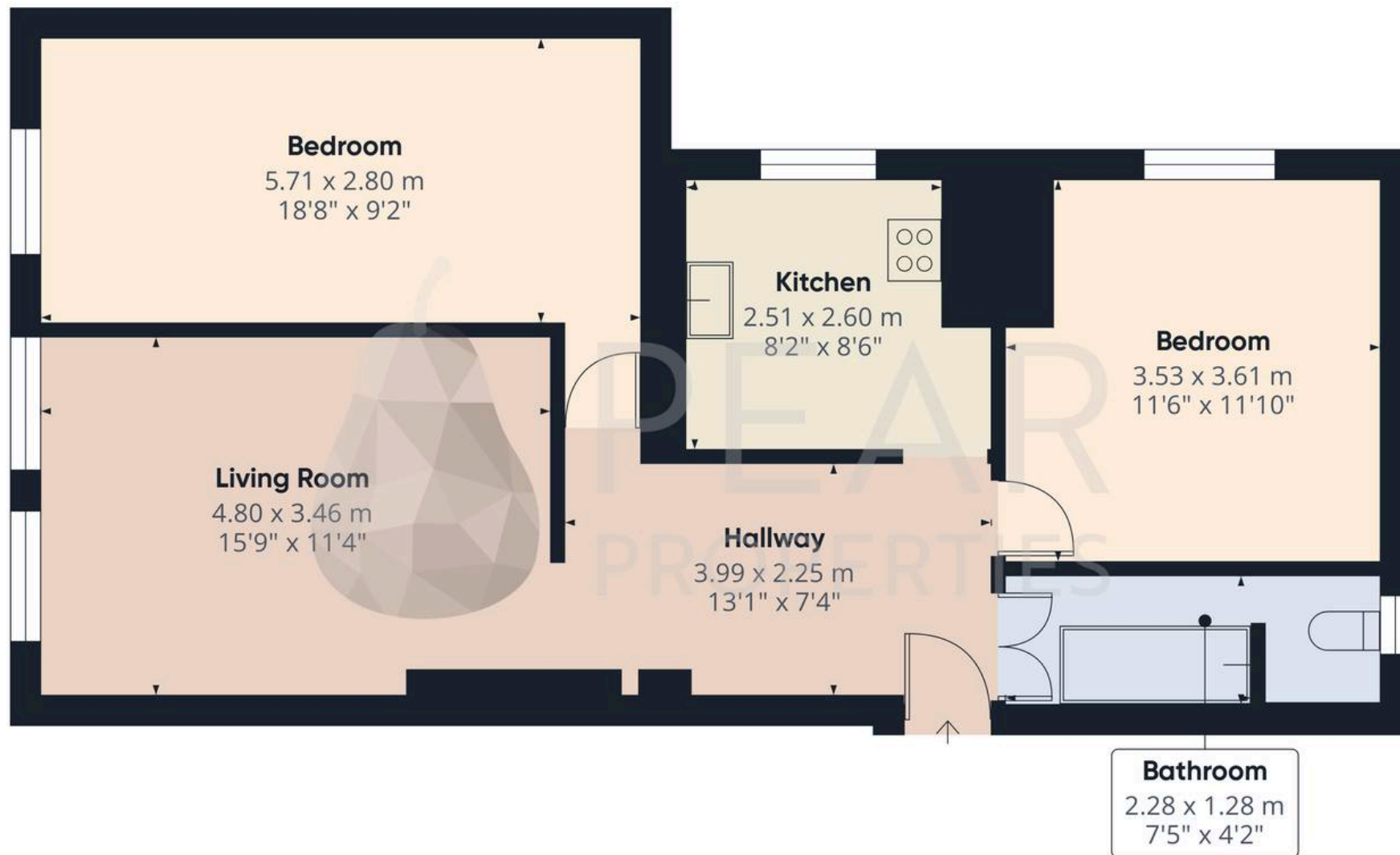
One allocated parking space in residents car park.

OFF STREET

2 Parking Spaces

Off street visitors parking spaces are available.





Approximate total area⁽¹⁾

66.1 m²
711 ft²

(1) Excluding balconies and terraces

Calculations reference the RICS IPMS 3C standard. Measurements are approximate and not to scale. This floor plan is intended for illustration only.

GIRAFFE360





Pear Properties

20 Crabtree Lane, Lancing - BN15 9QP

01903 947337 · hello@pearproperties.uk · pearproperties.uk