



  
**PROMINENCE**  
ESTATES



**RESIDENTIAL**  
PROPERTY EXPERTS

COVENTRY, WARWICKSHIRE  
& LEAMINGTON SPA

**ST MARGARET ROAD,**  
STOKE, COVENTRY, CV1 2BU

**£2,750 PCM**

# ST MARGARET ROAD

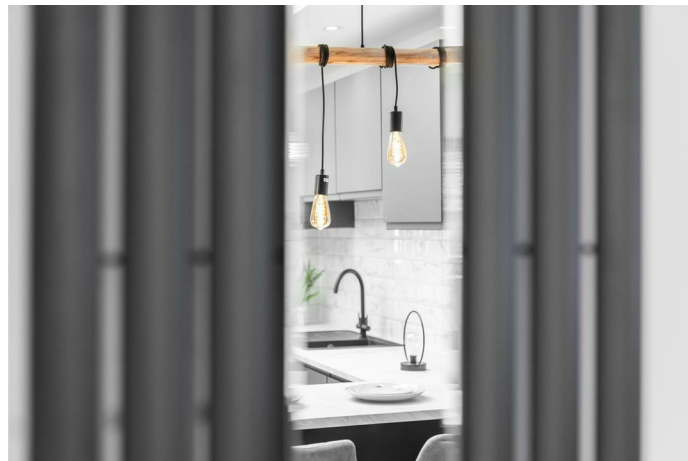


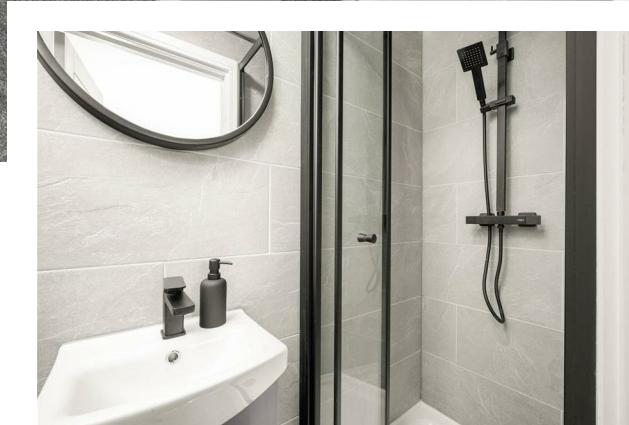
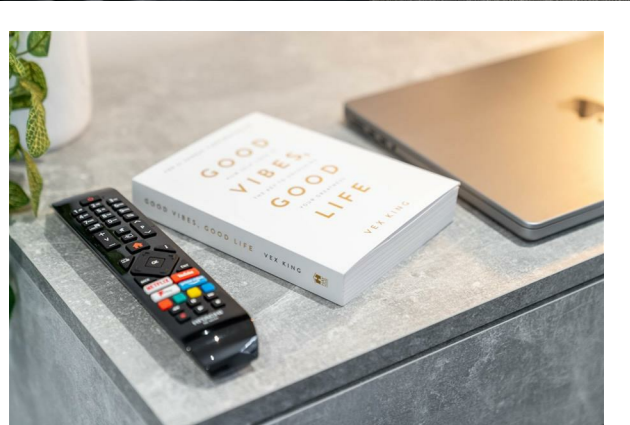
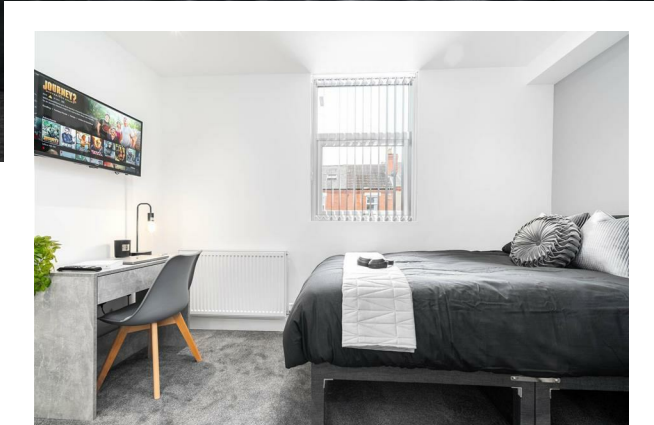
**PROMINENCE**  
ESTATES

**\*\*AVAILABLE SEPTEMBER 2026\*\*** - Student House! Coventry's Most Luxuriously Designed Modern 5 Bedroom Student House. **BILLS INCLUDED** + LED TV'S in each bedroom. 10 minutes walk to Coventry University - This is a brand new, top spec and luxurious house which has been professionally designed by an interior designer and has undergone extensive renovation providing students with a perfect place to live.

concrete grey furniture, bed, desk, chairs and a ultra-modern private ensuite shower room with black rainfall shower. The property also benefits from a low maintenance landscaped garden with artificial lawn.

The property comprises; modern open plan lounge area with artificial green plant wall, modern lighting throughout, **GOOD VIBES ONLY LED Sign**, LED TV and modern kitchen benefiting from breakfast bar with stools, microwave, modern cooker, fridge/freezers, washing machine and dryer. The bedrooms come fully furnished with LED TV, bespoke







Prominence Estates  
5 Queen Isabels Avenue,  
Cheylesmore,  
Coventry,  
CV3 5GE

02476 309 826  
lettings@prominenceestates.com  
www.prominenceestates.com

  
**PROMINENCE**  
ESTATES