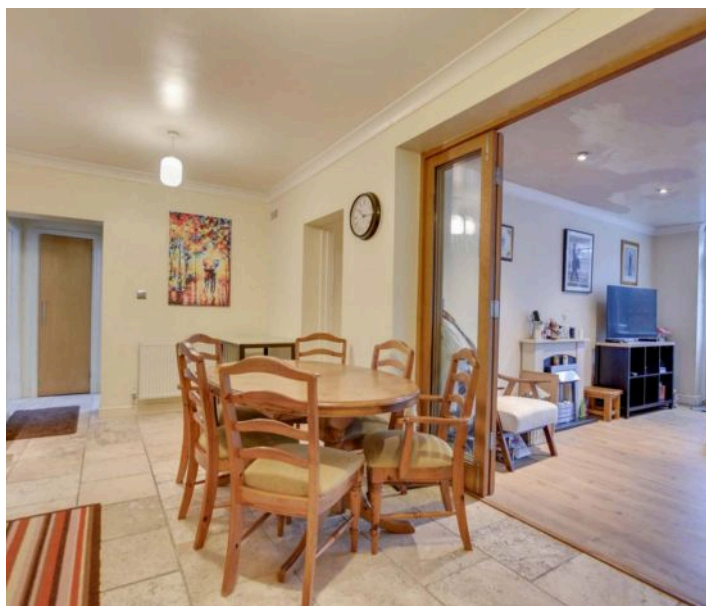


Carisbrooke Road, Knighton

£725,000 Freehold

Detached family home with flexible accommodation across three floors, 4 reception rooms, open-plan living kitchen, 5 bedrooms plus a ground floor bedroom, and a generous garden with driveway parking.





Entrance Porch

With tiled flooring and an internal door to the entrance hall.

Ground Floor WC

With double glazed window to the side elevation, a low-level WC, a wash hand basin, tiled walls, tiled flooring and an extractor fan.

Entrance Hall

With stairs to the first floor, coving to the ceiling, an understairs storage cupboard and a radiator

Reception One / Formal Dining Room

15' 3" x 12' 0" (4.66m x 3.65m)

With double glazed bay window to the front elevation with window shutters, two further double-glazed windows to the side elevation, a feature walk-in inglenook style fireplace with decorative wooden fire surround and tiled insert, including wooden panelling, fitted seat box/storage, plate rails, picture rails, wall lights, and radiator

Reception Room Two / Sitting Room

15' 1" x 14' 0" (4.60m x 4.26m)

With double-glazed windows to the side and rear elevations, a chimney breast with a feature living flame effect gas fire and limestone style fire surround, a granite insert and a hearth. Recessed display shelving, bespoke fitted display shelving with storage cupboards below, coving to the ceiling, wall lights, and a radiator



Open Plan Living Kitchen Dining Room

20' 3" x 18' 8" (6.18m x 5.70m)

(narrowing to 2.52m) Kitchen area: Features a double-glazed window to the front elevation with window shutters, sink and drainer with a range of traditional style wall and base units with Corian worktops over, breakfast bar, a Rangemaster cooker with chimney hood over, built-in dishwasher, space for fridge freezer, coving to ceiling, inset ceiling spotlights, limestone style tiled floor. Dining Area: With limestone-style tiled flooring, coving to the ceiling, a radiator, and folding doors to the family room. Access to a lobby area with a shelved storage cupboard and access to WC / utility room

Reception Room Three / Family Room

19' 0" x 14' 11" (5.79m x 4.54m)

With double-glazed windows to the rear elevation with window shutters, a double-glazed door to the rear garden, an electric fire with limestone-style fire surround, coving to the ceiling, inset ceiling spotlights, and two radiators

Reception Room Four / Ground Floor Bedroom Six

28' 7" x 11' 9" (8.70m x 3.59m)

(Narrowing to 4.96m) With double-glazed windows to the rear and side elevations, high ceilings with feature exposed roof beams, a built-in wardrobe and storage cupboards, recessed display shelving, access to loft storage, inset ceiling spotlights, and a radiator.







En-suite Shower Room

9' 7" x 5' 7" (2.92m x 1.70m)

With a double shower enclosure with chrome mixer shower, partly tiled walls, a wash hand basin, vanity cupboard with shelving below, low level WC, partly tiled walls, limestone-style tiled flooring, inset ceiling spotlights, extractor fan, heated chrome towel rail, and a radiator.

Utility Room

10' 6" x 4' 1" (3.20m x 1.24m)

With double glazed Velux skylight window and door to the front elevation, a wall-mounted boiler, a Belfast sink, utility cupboards, and a limestone-style tiled floor.

WC

488' 10" x 4' 5" (149.00m x 1.34m)

With a double-glazed Velux skylight window, a wash hand basin with vanity top, a low-level WC, limestone tiled flooring and a radiator.

First Floor Landing

Features a double-glazed window to the front elevation with window shutters, coving to the ceiling, and stairs to the loft conversion.

Bedroom Two

16' 0" x 13' 8" (4.87m x 4.17m)

(narrowing to 3.59) With a double-glazed window to the side elevation with window shutters, twin built-in double wardrobes, coving to the ceiling, and a radiator.

En-Suite Shower Room

9' 0" x 3' 8" (2.74m x 1.12m)

With a shower enclosure featuring a chrome mixer shower, a wash hand basin with mixer tap and granite-style worktop, vanity shelving below, partly tiled walls, inset ceiling downlighters, and a heated chrome towel rail.

Bedroom Three

12' 7" x 12' 0" (3.84m x 3.65m)

Features a double-glazed bay window to the front elevation with window shutters, built-in wardrobes, coving to the ceiling, and a radiator.

Bedroom Four

10' 4" x 7' 10" (3.16m x 2.40m)

With a double-glazed window to the side elevation with window shutters, wardrobe and a radiator.



Bedroom Five

10' 6" x 6' 11" (3.20m x 2.11m)

Features a double-glazed window to the rear elevation with window shutters, a built-in wardrobe, and a radiator.

Family Bathroom

9' 7" x 9' 0" (2.92m x 2.74m)

With a double-glazed window to the front elevation with window shutters, a roll-top free-standing bath with mixer tap, a low-level WC, a separate double shower cubicle with chrome mixer shower, inset ceiling spotlights, coving to the ceiling, tiled walls, a heated chrome towel rail, and a radiator.

Bedroom One / Loft Conversion

23' 4" x 11' 1" (7.11m x 3.37m)

With double-glazed French doors to a Juliet balcony on the rear elevation. Includes inset ceiling spotlights, built-in cupboards, a double-glazed window to the rear elevation, and a radiator.

En-Suite Shower Room

Features a double-glazed window to the rear elevation, a walk-in tiled shower cubicle with an overhead rainfall shower, a wash hand basin, and a low-level WC, tiled flooring, a heated towel rail, and inset ceiling spotlights.

Rear Garden

Includes a paved patio to the rear and side, with steps leading up to a mainly lawned rear garden with mature shrubs and trees to the borders, fencing to the perimeter, a raised decked area leading to an outhouse providing a useful gym and storage area with plumbing for a shower room and WC, as well as power and lighting.

Driveway

For 1 vehicle -Block paved driveway.

Car port

For 1 vehicle



2nd floor



1st floor

FLOOR PLAN CREATED BY CUBICASA APP; MEASUREMENTS DEEMED HIGHLY RELIABLE BUT NOT GUARANTEED.





Council Tax band: F

Tenure: Freehold

EPC Energy Efficiency Rating: D

We'll keep you moving...



We must inform all prospective purchasers that the measurements are taken by an electronic take and are provided as a guide only and they should not be used as accurate measurements. We have not tested any mains services, gas or electric appliances, or fixtures and fittings mentioned in these details, therefore, prospective purchasers should satisfy themselves before committing to purchase. Intending purchasers must satisfy themselves by inspection or otherwise to the correctness of the statements contained in these particulars. Knightsbridge Estate Agents (nor any person in their employment) has any authority to make any representation or warranty in relation to the property. The floor plans are not to scale, and are intended for use as a guide to the layout of the property only. They should not be used for any other purpose. We are required by law to conduct anti-money laundering checks on all those selling or buying a property. Whilst we retain responsibility for ensuring checks and any ongoing monitoring are carried out correctly, the initial checks are carried out on our behalf by Lifetime Legal who will contact you once you have agreed to instruct us in your sale or had an offer accepted on a property you wish to buy. The cost of these checks is £60 (incl. VAT), which covers the cost of obtaining relevant data and any manual checks and monitoring which might be required. This fee will need to be paid by you in advance of us publishing your property (in the case of a vendor) or issuing a memorandum of sale (in the case of a buyer), directly to Lifetime Legal, and is non-refundable. We will receive some of the fee taken by Lifetime Legal to compensate for its role in the provision of these checks.