



15 Leigh Terrace, Douglas, Isle Of Man, IM1 5AN
Asking Price £379,950

- Beautiful Traditional Period Townhouse Overlooking The Scenic River Glass
- Short Walk To Douglas Marina, Restaurants, Bars And Town Centre
- Spacious Accommodation Arranged Over Three Floors With Period Features
- Stylish Modern Kitchen And Flexible Living And Dining Spaces
- Five Bedrooms Including Superb Principal Suite With Ensuite
- Landscaped Tiered Roof Garden With Storage Area And Panoramic Views



Beautifully presented traditional period townhouse set in an idyllic position overlooking the River Glass. Ideally located, the property is within a short walk of Douglas Marina and its selection of bars and restaurants. The centre of Douglas, including Tesco Superstore, the shopping area of Strand Street and the business district of Athol Street, is also within easy walking distance.

This attractive home offers spacious family accommodation arranged over three floors, retaining many original features which are complemented by modern, high-quality fixtures and fittings.

The accommodation begins with an entrance porch leading into a welcoming hallway with cloakroom (WC). To the front is a stunning living room featuring a freestanding log burner, perfect for cosy evenings. Bespoke concealed sliding doors open into a separate dining/family room, creating flexible living space. The ground floor also benefits from a stylish and spacious modern kitchen with access to the rear courtyard.

The first floor provides three well-proportioned bedrooms, one currently utilised as a study / home office and cinema room respectively, with the front rooms enjoying views across the River Glass. There is also a laundry room and a large family bathroom.

On the second floor there are two further generous bedrooms, including a superb principal bedroom spanning the full width of the property with an ensuite shower room. From the half landing there is access to a superb landscaped roof and tiered garden, ideal for entertaining.

Externally, the front of the property features a low-maintenance paved seating area. To the rear is a decked roof garden and three paved tiers including seating, and storage sheds, with far-reaching views across Douglas and the surrounding countryside.

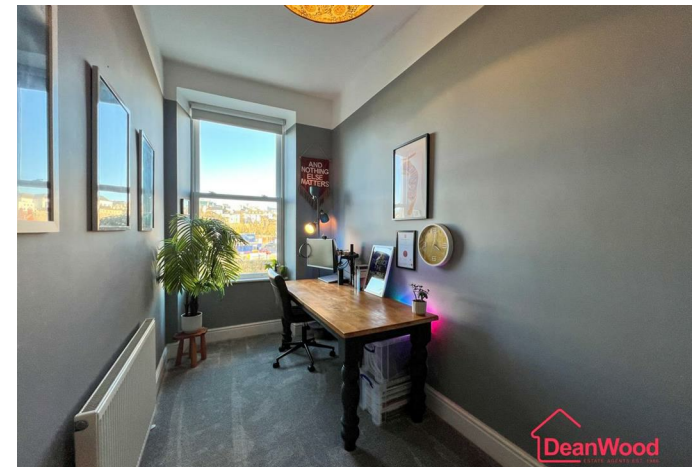
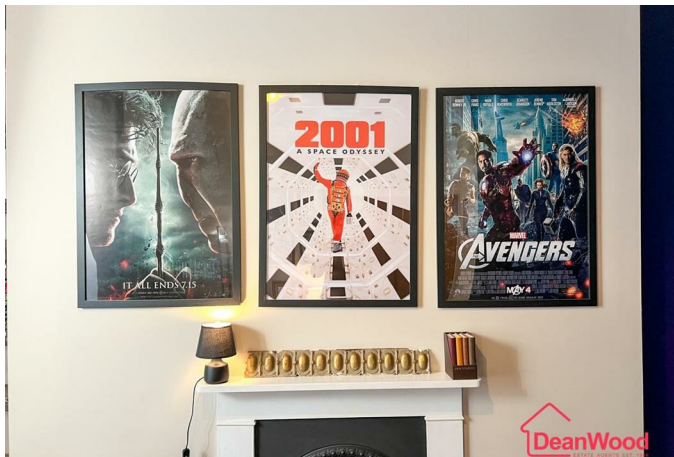






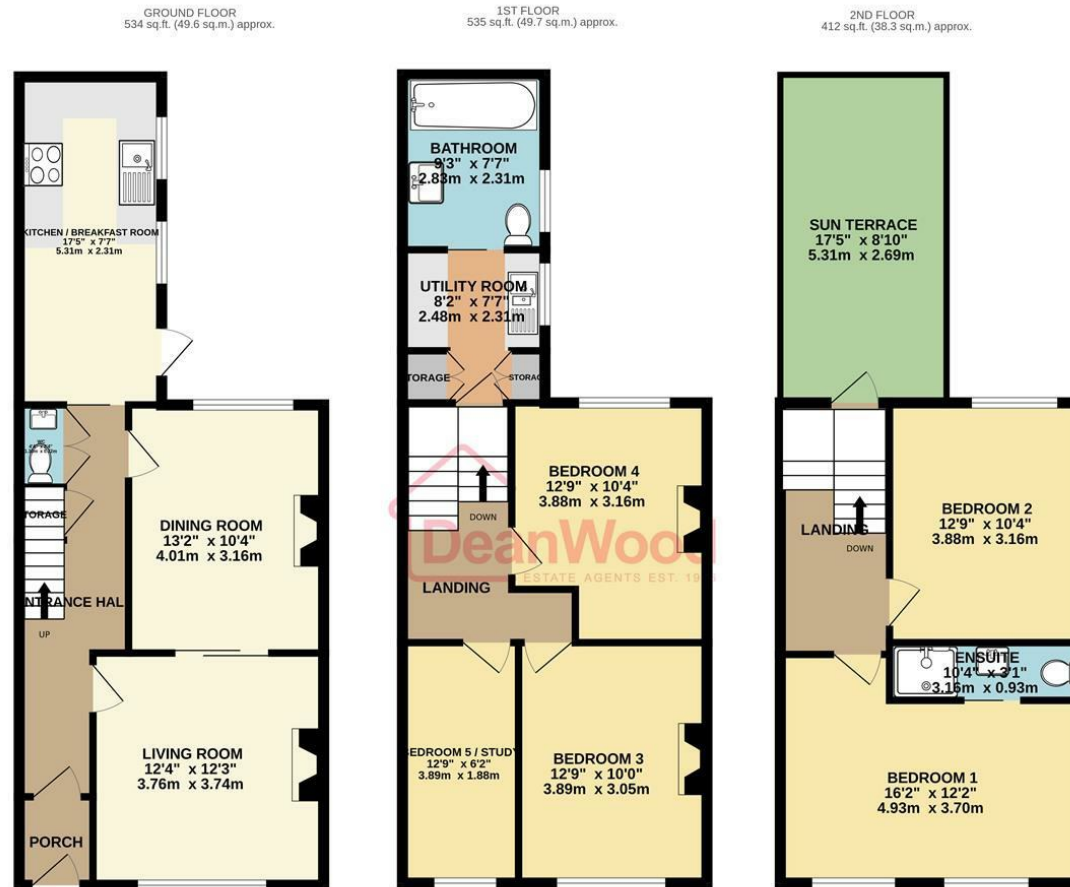






15 Leigh Terrace, Douglas, Isle Of Man, IM1 5AN





TOTAL FLOOR AREA: 1481 sq.ft. (137.6 sq.m.) approx.
 Not to scale for identification purposes only
 Made with Metropix ©2026

DOUGLAS

37 VICTORIA STREET
 DOUGLAS
 ISLE OF MAN IM1 2LF

T 01624 620606
 F 01624 677363
 E info@deanwood.co.im

CASTLETOWN

COMPTON HOUSE
 9 CASTLE STREET CASTLETOWN
 ISLE OF MAN IM9 1LF

T 01624 825995
 F 01624 825996
 E castletown@deanwood.co.im

RAMSEY

LEZAYRE HOUSE
 87 PARLIAMENT STREET
 RAMSEY ISLE OF MAN IM8 1AQ

T 01624 816111
 F 01624 816588
 E ramsey@deanwood.co.im

These particulars are for information purposes only. They do not constitute or form any contract nor should any statement contained herein be relied upon as a representation of fact. Neither the vendor nor DeanWood Agencies Limited ('the firm'), nor any officer or employee of the firm accept liability or responsibility for any statement contained herein. The vendor does not by these particulars, nor does the firm, nor does any officer or any employee of the firm have any authority to make or give any representation or warranty whatsoever as regards the property or otherwise. It is the sole responsibility of any person interested in the property described in these particulars to make all proper enquiries and searches to verify the description of the property and all other particulars herein.

FOR MORE PROPERTIES VISIT OUR WEBSITE @ deanwood.im