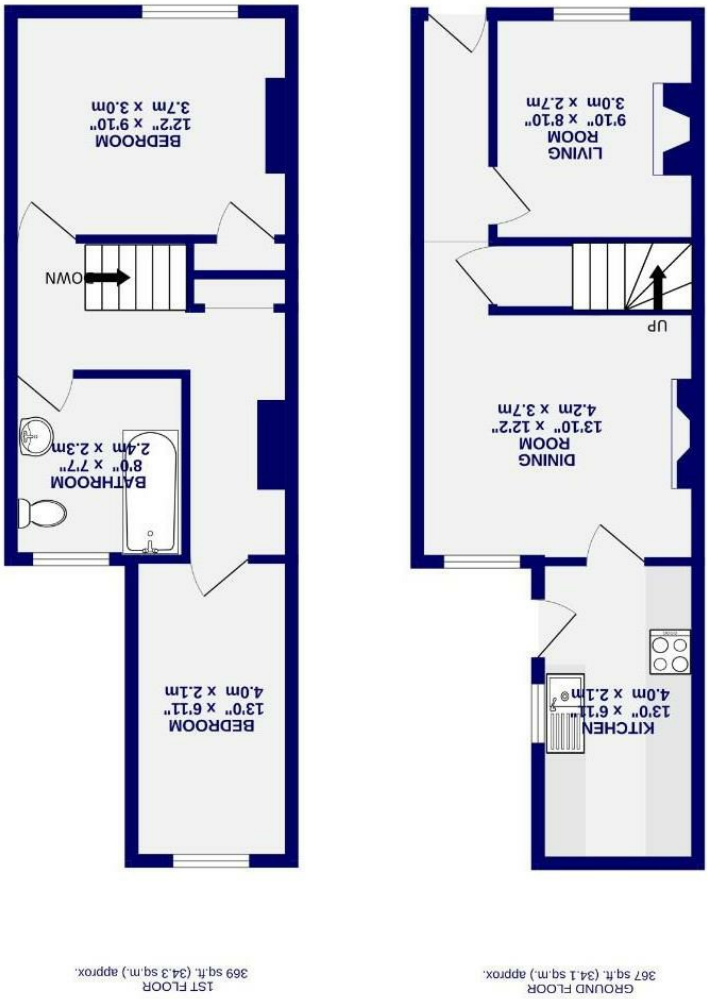


These particulars have been prepared as accurately and as reliably as possible, but should not be relied upon as 'statement of fact'. If there is any point which is of particular importance to you, please contact the office and we would be pleased to check the information. We have not tested any services, appliances, equipment or facilities and nothing in these particulars should be deemed to be a statement that they are in good working order, or that the property is in good structural condition or otherwise. Any areas, measurements, floor plans or distances referred to are given as a guide only and are not precise. Purchasers must satisfy themselves by inspection or by otherwise regarding the items mentioned above and as to the correctness of each of the statements contained in these particulars. No person in the employment of Ashtons has any authority to make or give any representation or warranty whatsoever in relation to this property or these particulars nor enter into any contract relating to the property on behalf of the vendor.

- EPC C
- Period Features
- No Onward Chain
- Rear Courtyard Garden
- First Floor Bathroom
- Two Double Bedrooms
- Period Terrace House

Freehold
Council Tax Band - B

Horner Street Off Burton Stone YO30 6EA



Horner Street
Off Burton Stone Lane, York
YO30 6EA

£250,000

 2  1

An extended and recently redecorated two bedroom mid terrace property, ideally positioned just off Burton Stone Lane in this consistently popular residential location.

The property has undergone redecoration to create a fresh and welcoming home, ready for immediate occupation. Benefits include UPVC double glazed windows, gas central heating, a modern kitchen and a three piece bathroom suite to the first floor.

The ground floor accommodation is well proportioned and comprises two separate reception rooms, both retaining attractive period fireplaces, along with a useful understairs store. To the rear is the kitchen fitted with a range of modern base and wall units, stainless steel sink, electric cooker with extractor hood and practical laminate flooring, with a glazed door providing access to the side.

To the first floor are two double bedrooms, both carpeted, and a spacious bathroom fitted with a contemporary three piece suite comprising low flush WC, wash hand basin with mixer tap and a bath with mixer tap shower attachment. The bathroom is finished with tiled flooring and part tiled walls, complemented by a wall mounted radiator and opaque window.

Externally, the property enjoys a private and enclosed rear courtyard, ideal for low maintenance outdoor seating, with the added benefit of two lockable storage sheds and access to a service alley. On street parking is available to the front.

An attractive home in a sought after area, well suited to professionals or couples. Early viewing is strongly recommended to appreciate the accommodation on offer.

Council tax Band - C

