



YOUR MOVE

- Hobin Roberts -

WWW.YOUR-MOVE.CO.UK

Field Rose Square, Northampton
£117,500

Field Rose Square,
Northampton

£117,500

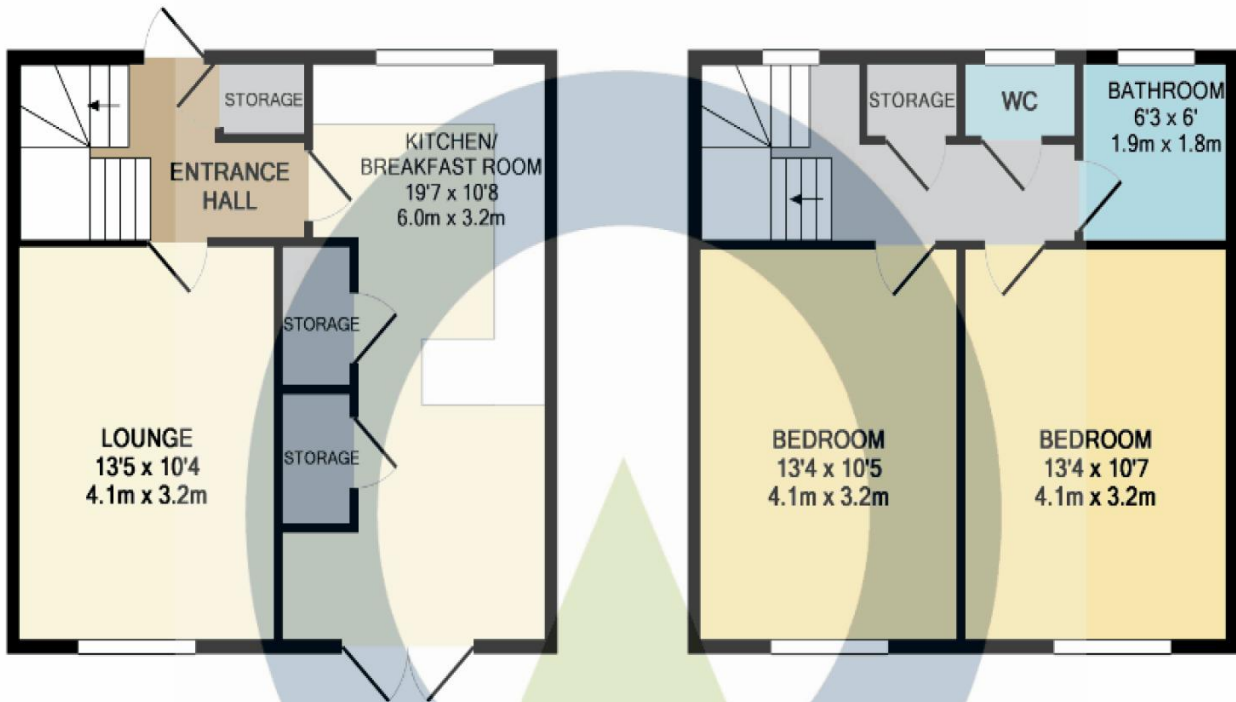
DESCRIPTION

Making an attractive investment opportunity is this very well maintained two double bedroom mid terrace situated in the popular location of Ecton Brook. Entry into the property via a hard wood door with glazed inset to the spacious entrance hall accommodating loads of storage space. Branching off the entrance hall into the spacious lounge where your eyes are drawn to the feature fire place. To the kitchen/ diner which is fully fitted with modern base and high level units. This open planned living area would be perfect for entertaining with the French doors opening onto the private rear garden, ideal for those BBQ's in those summer evenings. Stairs to the first floor landing where you are lead to the two double bedrooms, separate W/C flush and a fully fitted bathroom. Externally, the rear garden is enclosed and mainly laid to lawn with a small patio area. There is a pathway which leads you to the communal parking.

LOCATION

The property is located in a popular residential development of Ecton Brook approximately 5 miles to the east of the Town Centre close to open countryside. The nearby A45 ring road ensures easy access to all major facilities including the popular Riverside retail park which has a range of shops and restaurants. Also situated less than a mile away is the Weston Favell shopping centre which has a large 24 hour supermarket and a vast range of High Street branded shops and dining establishments and parking is free. Adjacent to the centre is the Lings Forum leisure complex, library and medical centre. The modern Northampton Academy secondary school is just over a mile away and recently received a 'Good' rating in a recent Ofsted report. Ecton Brook and Rectory Farm primary schools are also situated within a mile.





GROUND FLOOR
APPROX. FLOOR
AREA 410 SQ.FT.
(38.1 SQ.M.)



1ST FLOOR
APPROX. FLOOR
AREA 410 SQ.FT.
(38.1 SQ.M.)

TOTAL APPROX. FLOOR AREA 820 SQ.FT. (76.2 SQ.M.)

Whilst every attempt has been made to ensure the accuracy of the floor plan contained here, measurements of doors, windows, rooms and any other items are approximate and no responsibility is taken for any error, omission, or mis-statement. This plan is for illustrative purposes only and should be used as such by any prospective purchaser. The services, systems and appliances shown have not been tested and no guarantee as to their operability or efficiency can be given
Made with Metropix ©2014



For full EPC please contact the branch

YOUR MOVE Hobin Roberts is the trading name of Hobin Roberts Limited, registered company number 5075787, registered office 10 Silver Street, Kettering, Northants, NN16 0BN. YOUR MOVE Hobin Roberts is an independently owned and operated business, operated under licence from your-move.co.uk Limited.

IMPORTANT NOTE TO PURCHASERS: We endeavour to make our sales particulars accurate and reliable, however, they do not constitute or form part of an offer or any contract and none is to be relied upon as statements of representation or fact. The services, systems and appliances listed in this specification have not been tested by us and no guarantee as to their operating ability or efficiency is given. All measurements have been taken as guide to prospective buyers only, and are not precise. Floor plans where included are not to scale and accuracy is not guaranteed. If you require clarification or further information on any points, please contact us, especially if you are travelling some distance to view. Fixtures and fittings other than those mentioned are to be agreed with the seller.

Draft Details

The above details have been submitted to our clients but at the moment have not been approved by them and we therefore cannot guarantee their accuracy and they are distributed on this basis. Please ensure that you have a copy of our approved details before committing yourself to any expense.

*Source: Nielsen, Oct 2012.

**Calls may be recorded and/or monitored for training and/or security purposes.



Bridge Street, Northampton, NN1 1NH
tel: 01604 633272 **
email: Northampton@your-move.co.uk
www.your-move.co.uk - The UK's most visited estate agency website*

