



PRINCES GATE MEWS

KNIGHTSBRIDGE SW7





Discreetly positioned in the heart of Knightsbridge, Princes Gate Mews is an exquisitely designed, newly built home, offered turnkey, in a peaceful and highly sought-after location.

Thoughtfully arranged over five floors, all served by a four person private lift, the house is defined by exceptional craftsmanship, elegant proportions, and a refined contemporary aesthetic.

The accommodation is beautifully considered, with six generous bedroom suites, each featuring bespoke Boffi joinery and luxurious finishes. Practical features have been carefully incorporated, including a secure internal garage and additional private parking outside, a rare asset in this location. The house also benefits from air conditioning and underfloor heating throughout the house.





A striking spiral staircase serves as an architectural focal point, enhancing the sense of space and light throughout.

Whether you envision a cosy snug for relaxing evenings or a fully equipped cinema room for the ultimate movie nights, this flexible area offers the perfect setting. Seamlessly connected to the heart of the home, it combines convenience with comfort, making it a stand-out feature for both everyday living and entertaining.



The expansive living and dining areas provide an ideal setting for both formal entertaining and relaxed family living, complemented by a Boffi-designed eat-in kitchen and a separate staff kitchen for additional convenience.















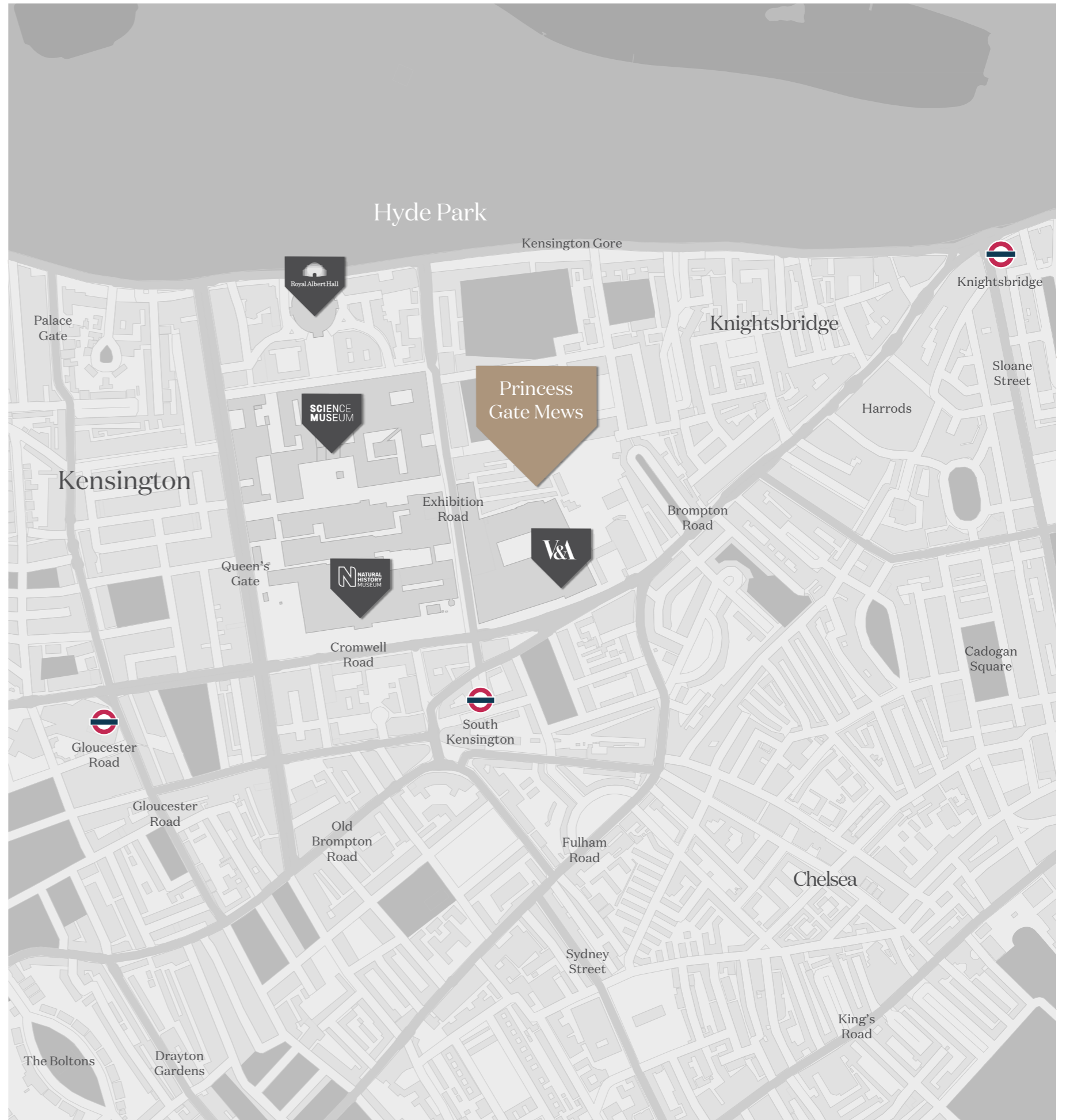


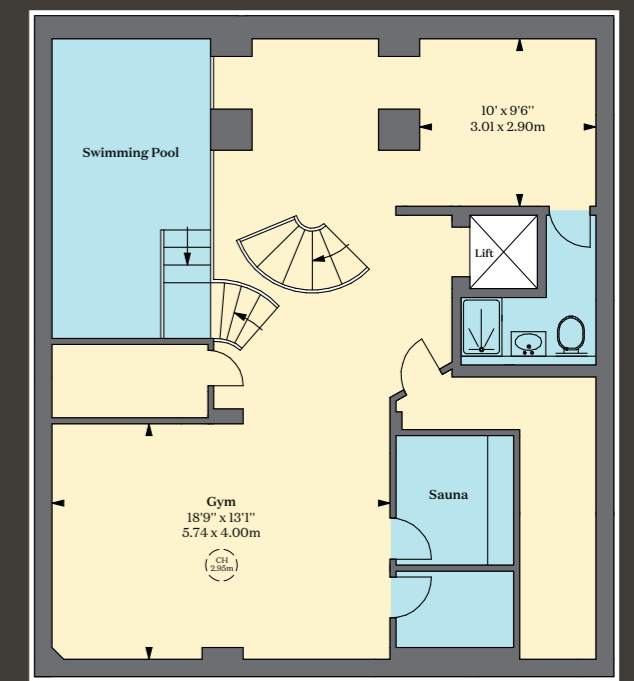
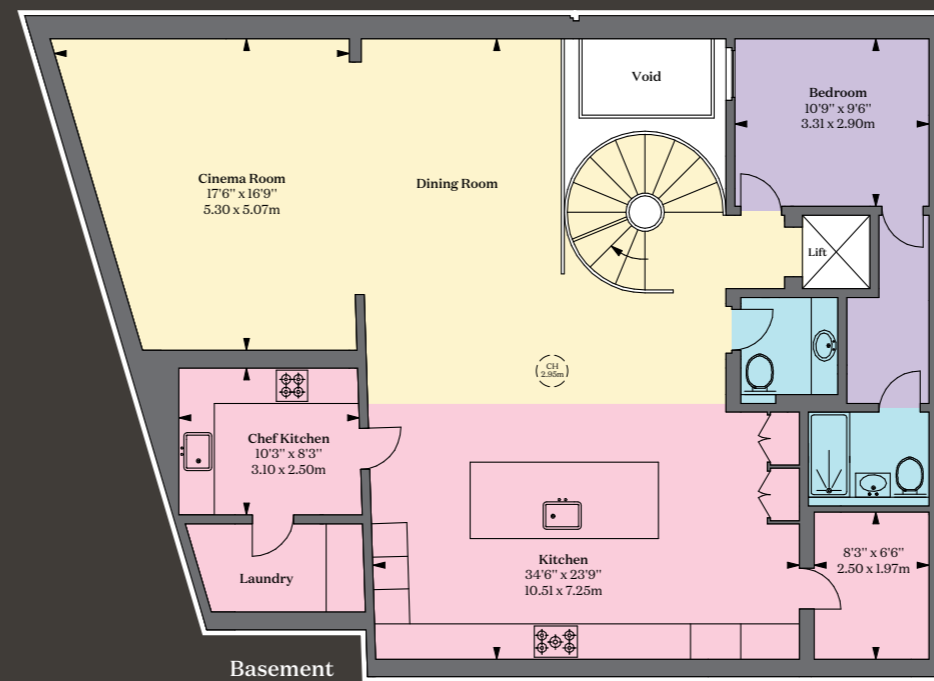
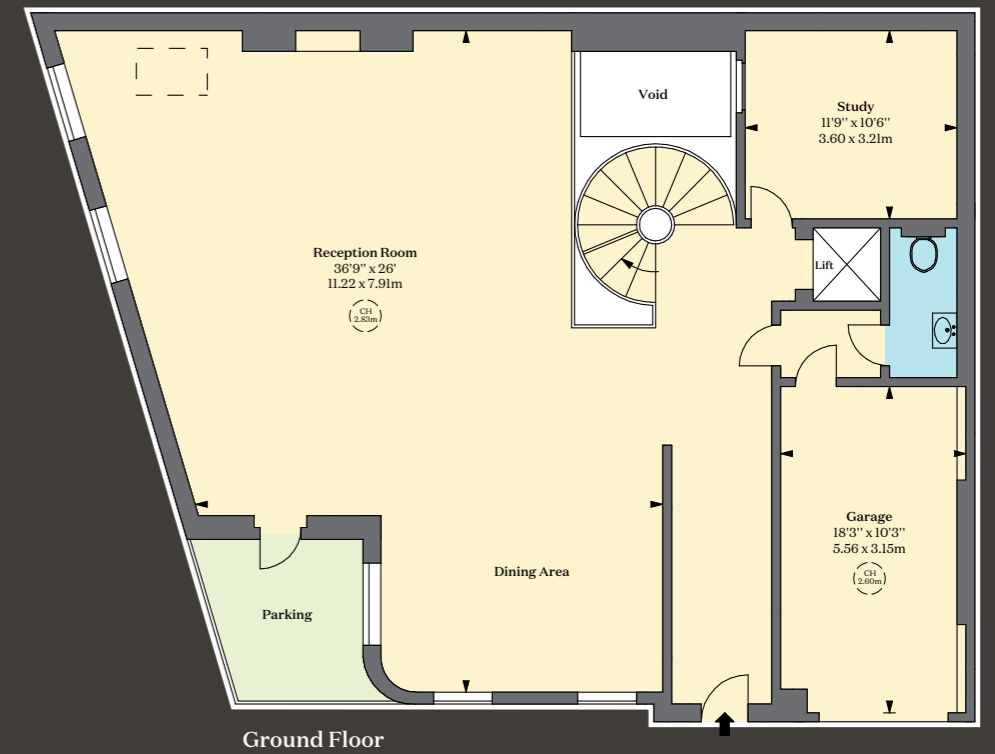
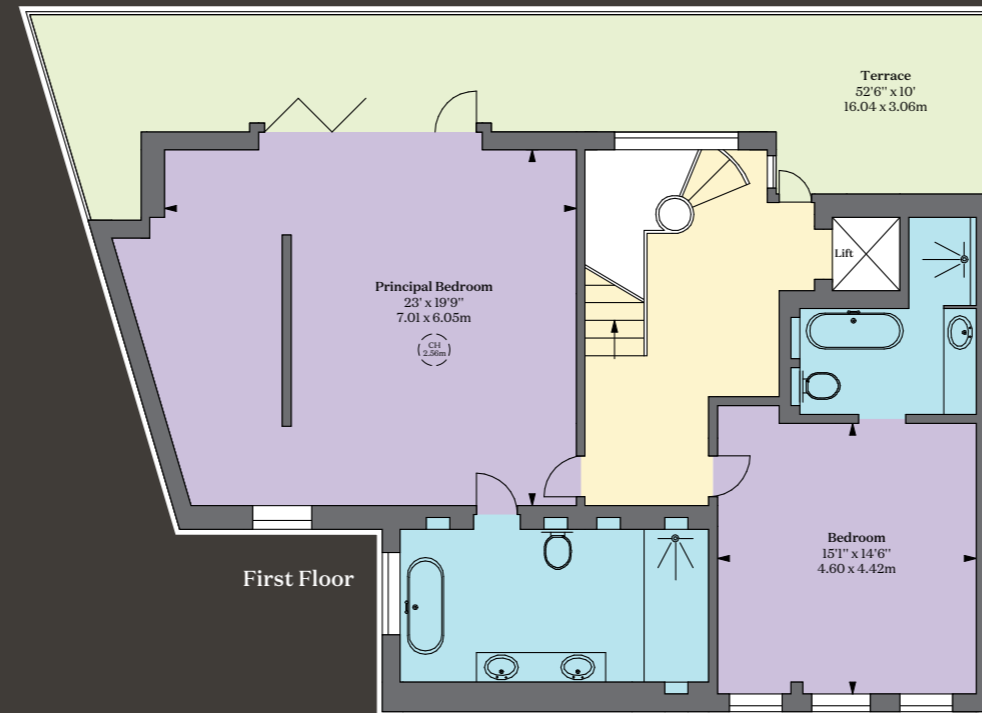
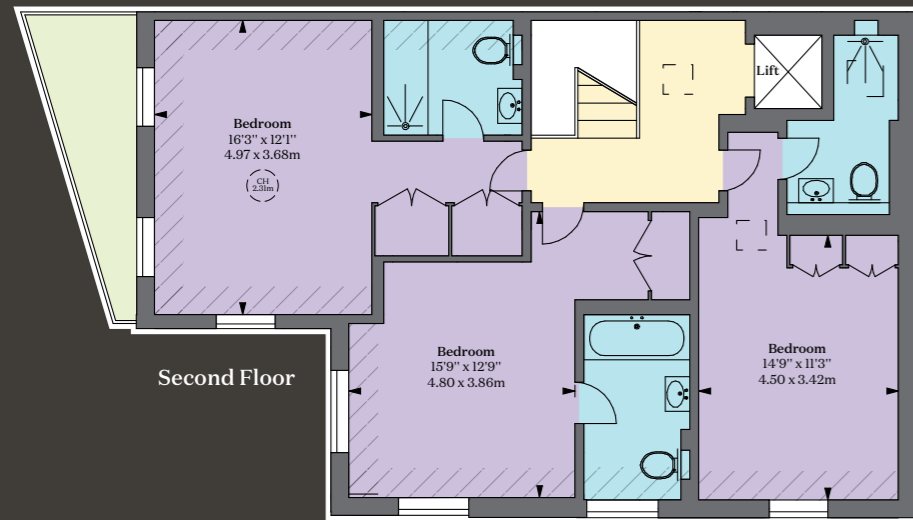
A focus on well-being is at the heart of the design, with a swimming pool, sauna, and relaxation area creating a tranquil retreat within the home. A cinema area and study add to the versatility of the space, ensuring it meets the needs of modern living.



Location

Princes Gate Mews is a quiet cobbled cul-de-sac situated between Hyde Park and the Victoria and Albert museum and close to Brompton Road (including Harrods). Hyde Park is a short distance away, as are the bustling centres of South Kensington and Knightsbridge. There is access out to Ennismore Gardens and the charming public gardens of the Holy Trinity Brompton via a discrete passage 30 meters away. (Distances are approximate.)





Guide Price **Tenure**
 £10,950,000 Freehold

Local Authority
 Kensington & Chelsea

Council Tax **EPC**
 Band H Rating C

Approximate Gross Internal Area
 6,235 sq ft / 579.23 sq m

This plan is for guidance only and must not be relied upon as a statement of fact. Attention is drawn to the important notice on the last page of the text of the Particulars.

Hatched Area: Under 1.5m
 CH: Ceiling height

Floorplan for guidance only, not to scale or for valuations purposes. It must not be relied upon as a statement of fact. All measurements and areas are approximate and have been prepared in accordance with the current edition of the RICS Code of Measuring Practice.
 © Alex Winship Photography Ltd.

Due to the property being in receivership, we do not have all the material information for the property, therefore you should ensure you make all relevant enquiries relating to the property

We would be delighted to tell you more.

Paul Westwood
+44 20 3371 3132
paul.westwood@knightfrank.com

Knight Frank Knightsbridge
52-54 Sloane Avenue
SW3 3DD

[knightfrank.co.uk](https://www.knightfrank.co.uk)

Your partners in property

Fixtures and fittings: A list of the fitted carpets, curtains, light fittings and other items fixed to the property which are included in the sale (or may be available by separate negotiation) will be provided by the Seller's Solicitors.

Important Notice: 1. Particulars: These particulars are not an offer or contract, nor part of one. You should not rely on statements by Knight Frank LLP in the particulars or by word of mouth or in writing ("information") as being factually accurate about the property, its condition or its value. Neither Knight Frank LLP nor any joint agent has any authority to make any representations about the property, and accordingly any information given is entirely without responsibility on the part of the agents, seller(s) or lessor(s). 2. Photos, Videos etc: The photographs, property videos and virtual viewings etc. show only certain parts of the property as they appeared at the time they were taken. Areas, measurements and distances given are approximate only. 3. Regulations etc: Any reference to alterations to, or use of, any part of the property does not mean that any necessary planning, building regulations or other consent has been obtained. A buyer or lessee must find out by inspection or in other ways that these matters have been properly dealt with and that all information is correct. 4. VAT: The VAT position relating to the property may change without notice. 5. To find out how we process Personal Data, please refer to our Group Privacy Statement and other notices at <https://www.knightfrank.com/legals/privacy-statement>.

Particulars dated June 2025. Photographs and videos dated May 2025.

All information is correct at the time of going to print. Knight Frank is the trading name of Knight Frank LLP. Knight Frank LLP is a limited liability partnership registered in England and Wales with registered number OC305934. Our registered office is at 55 Baker Street, London W1U 8AN. We use the term "partner" to refer to a member of Knight Frank LLP, or an employee or consultant. A list of members names of Knight Frank LLP may be inspected at our registered office. If you do not want us to contact you further about our services then please contact us by either calling 020 3544 0692, email to marketing.help@knightfrank.com or post to our UK Residential Marketing Manager at our registered office (above) providing your name and address. 06/29/26 KF-250607D-11-JF

