



**MILES ESTATE AGENTS**

**40 Stawell Road Bishops Lydeard  
Taunton TA4 3FA £315,000**





A well presented 3 bed semi detached David Wilson Home built in 2021 (of the The Ashurst design) set in a tucked away and quiet location with larger than average south facing garden in this ever popular Quantock village within Kingsmead catchment area. Lovely kitchen/dining room, good size sitting room, en suite and 2 off road parking spaces. Early viewing highly recommended and NO ONWARD CHAIN. Freehold with Estate Management charge of £349pa. Council Tax Band C EPC : B.







## Features:

- Entrance hall
- Superb kitchen/dining room
- Spacious sitting room
- Cloakroom
- Master bedroom with en suite
- 2 further good size bedrooms
- Family bathroom
- Larger than average enclosed south facing garden
- Off road parking for 2 cars
- Lovely tucked away location on the edge of the village
- Freehold with Estate Management charge
- Council Tax Band C
- EPC : B

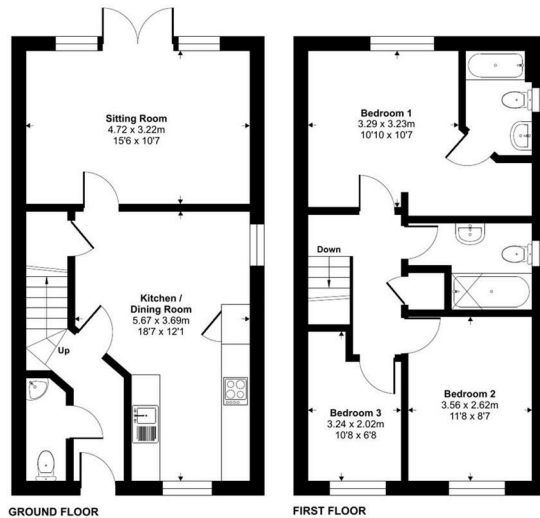




## Stawell Road, Bishops Lydeard, Taunton, TA4

Approximate Area = 918 sq ft / 85.2 sq m

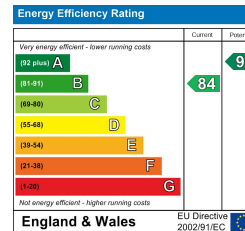
For identification only - Not to scale



GROUND FLOOR

FIRST FLOOR

Floor plan produced in accordance with RICS Property Measurement 2nd Edition, incorporating International Property Measurement Standards (IPMS2 Residential). © richcom 2025. Produced for Miles Estate Agents Limited T/A Miles Estate Agents. REF: 1388035



Viewings strictly through the selling agents:

**Miles Estate Agents**

2 Piffin Lane, Bishops Lydeard, Taunton,  
Somerset, TA4 3AS

**Tel: 01823 470 500**

[lydeard@milesestateagents.co.uk](mailto:lydeard@milesestateagents.co.uk)

[www.milesestateagents.co.uk](http://www.milesestateagents.co.uk)



**rightmove**

**OnTheMarket.com**

# MILES ESTATE AGENTS

