



Middleton Court, £220,000

- No On-Going Chain
- Partial Sea View
- Retirement Apartment
- Prime Location
- EPC Rating: C





About the property

Located adjacent to Porthcawl seafront and within easy access of local amenities is this purpose built first floor retirement apartment. Known as Middleton Court the building offers a House Manager, lift, door entry system, mobility scooter charging room and bicycle store. There is a communal hallway with a residents' lounge, guest suite, laundry room and lift. Entrance hallway with fitted carpet and access to the wet room, lounge kitchen and double bedroom. The lounge offers views over the communal garden and towards the sea. The kitchen is fitted with a range of wall and base units with worktops over, sink and drainer, four ring hob and eye level oven plus a fridge and freezer. The wet room has a walk in shower with glass screen, vanity wash hand basin and wc. The bedroom has a fitted carpet and a walk in wardrobe. Viewing is highly recommended.



Accommodation

Lounge

19' 3" max x 11' max (5.87m max x 3.35m max)

Hall

Kitchen

7' 7" max x 7' 1" max (2.31m max x 2.16m max)

Bedroom

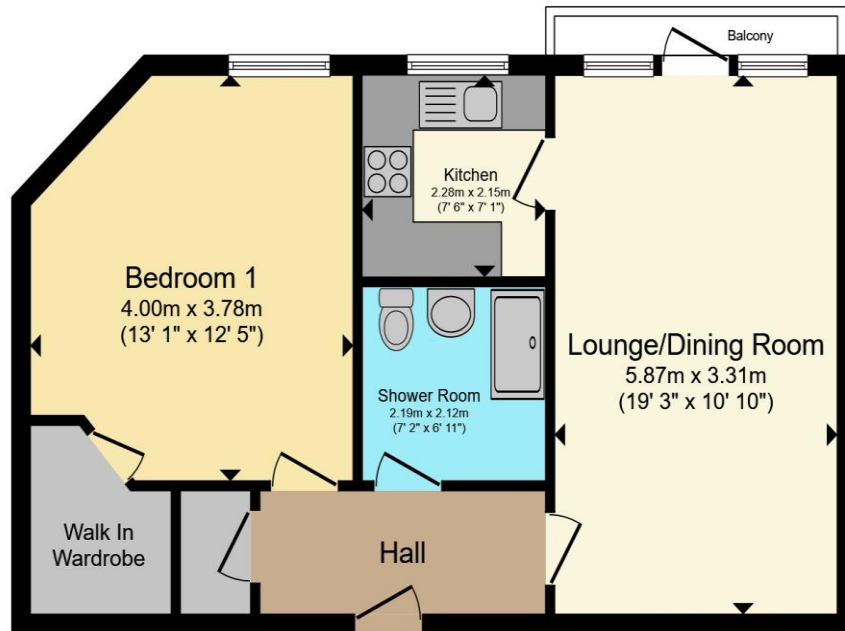
13' 1" max x 12' 5" max (3.99m max x 3.78m max)

Wet Room

01656 771600

porthcawl@peteralan.co.uk

Floorplan



Ground Floor

Total floor area 54.4 m² (586 sq.ft.) approx

This floor plan is for illustrative purposes only. It is not drawn to scale. Any measurements, floor areas (including any total floor area), openings and orientation are approximate. No details are guaranteed, they cannot be relied upon for any purpose and they do not form part of any agreement. No liability is taken for any error, omission or misstatement. A party must rely upon its own inspection(s). Powered by www.propertybox.io



Important Information

Note while we endeavour to make our sales details accurate and reliable, if there is any point which is of particular interest to you, please contact the office and we will be pleased to confirm the position for you. We have not personally tested any apparatus, equipment, fixtures, fittings or services and cannot verify they are in working order or fit for their purposes. Nothing in these particulars is intended to indicate that carpets or curtains, furnishings or fittings, electrical goods (whether wired or not). Gas fires or light fittings or any other fixtures not expressly included form part of the property offered for sale. This computer generated Floorplan, if applicable, is intended as a general guide to the layout and design of the property. It is not to scale and should not be relied upon for dimensions. Tenure: We cannot confirm the tenure of the property as we have not had access to the legal documents. The buyer is advised to obtain verification from their solicitor or surveyor.

Peter Alan Limited is registered in England and Wales under company number 2073153, Registered Office is Cumbria House, 16-20 Hockliffe Street, Leighton Buzzard, Bedfordshire, LU7 1GN. VAT Registration Number is 500 2481 05. For activities relating to regulated mortgages and non-investment insurance contracts, Peter Alan Limited is an appointed representative of Connells Limited which is authorised and regulated by the Financial Conduct Authority. Connells Limited's Financial Services Register number is 302221. Most buy-to-let

