



Park Villas Commercial Road
, Poole, BH14 0HR

Asking price £300,000



Park Villas Commercial Road

, Poole, BH14 0HR

We are delighted to offer for sale this charming two-bedroom end-of-terrace home. The property features a contemporary open-plan living space, with the living area opening through patio doors onto the communal garden, and a modern kitchen complete with integrated appliances and a convenient downstairs WC. Upstairs, there are two well-proportioned bedrooms, the master benefitting from fitted wardrobes, alongside a stylish family bathroom.

Additional advantages include ample storage, gas-fired central heating, UPVC double glazing, an allocated underground parking space, and a long lease, all offered with no onward chain.

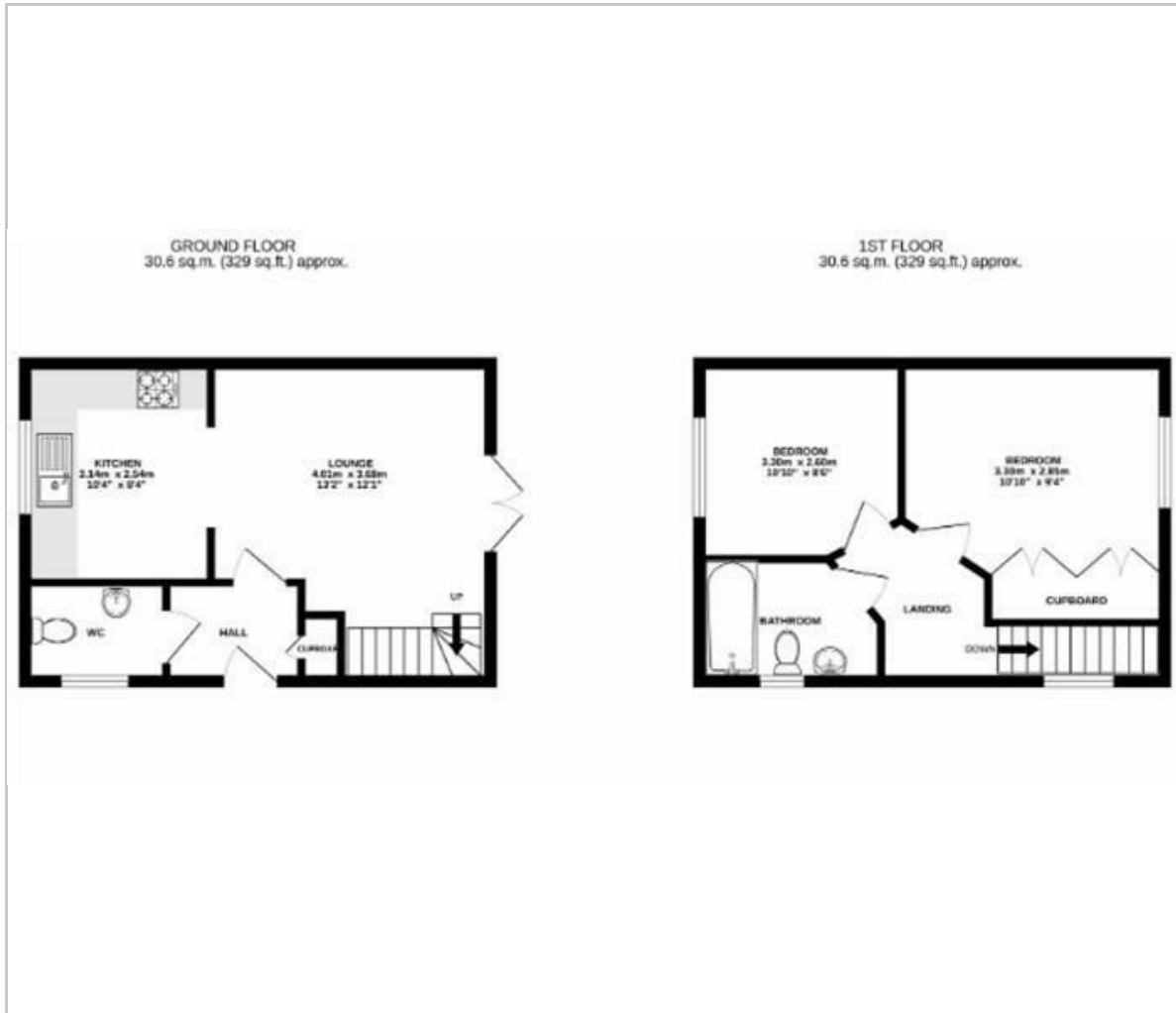
Residents can also take advantage of the communal garden, providing a shared outdoor space for relaxation.

Ideally located just a short stroll from Ashley Cross, the home is close to a variety of shops, bars, and restaurants, with Parkstone train station nearby providing easy access to Weymouth and London Waterloo





Floor Plan

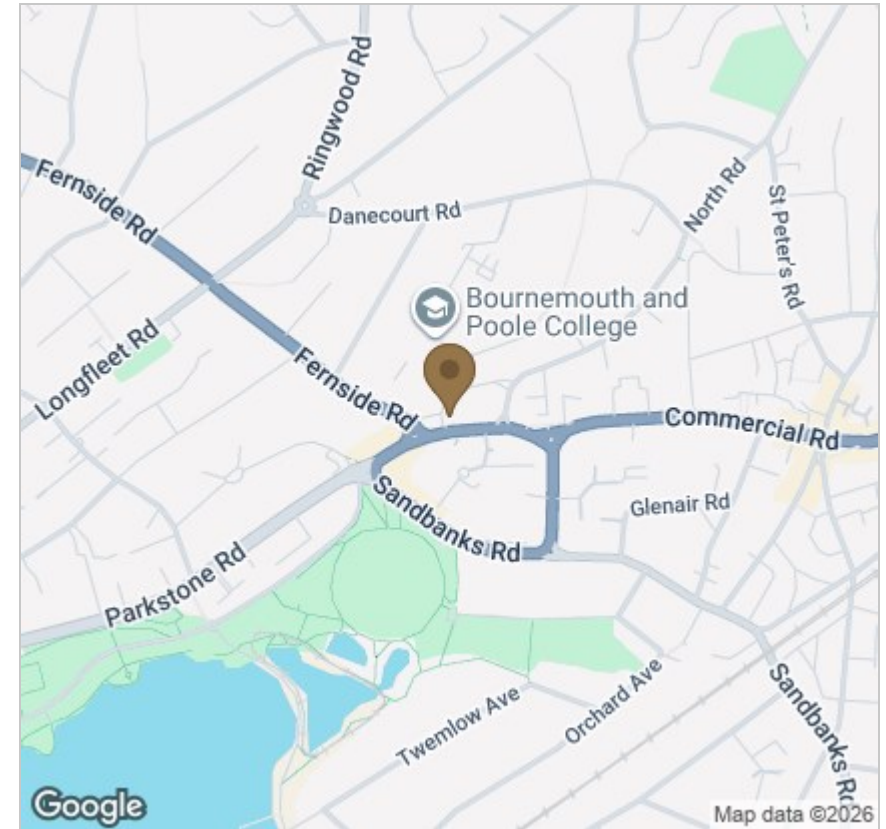


Viewing

Please contact our StQ Property Group Office on 01202877123 if you wish to arrange a viewing appointment for this property or require further information.

These particulars, whilst believed to be accurate are set out as a general outline only for guidance and do not constitute any part of an offer or contract. Intending purchasers should not rely on them as statements of representation of fact, but must satisfy themselves by inspection or otherwise as to their accuracy. No person in this firm's employment has the authority to make or give any representation or warranty in respect of the property.

Area Map



Energy Efficiency Graph

