



Finchley Road, Hampstead, NW3  
£3,140 pcm

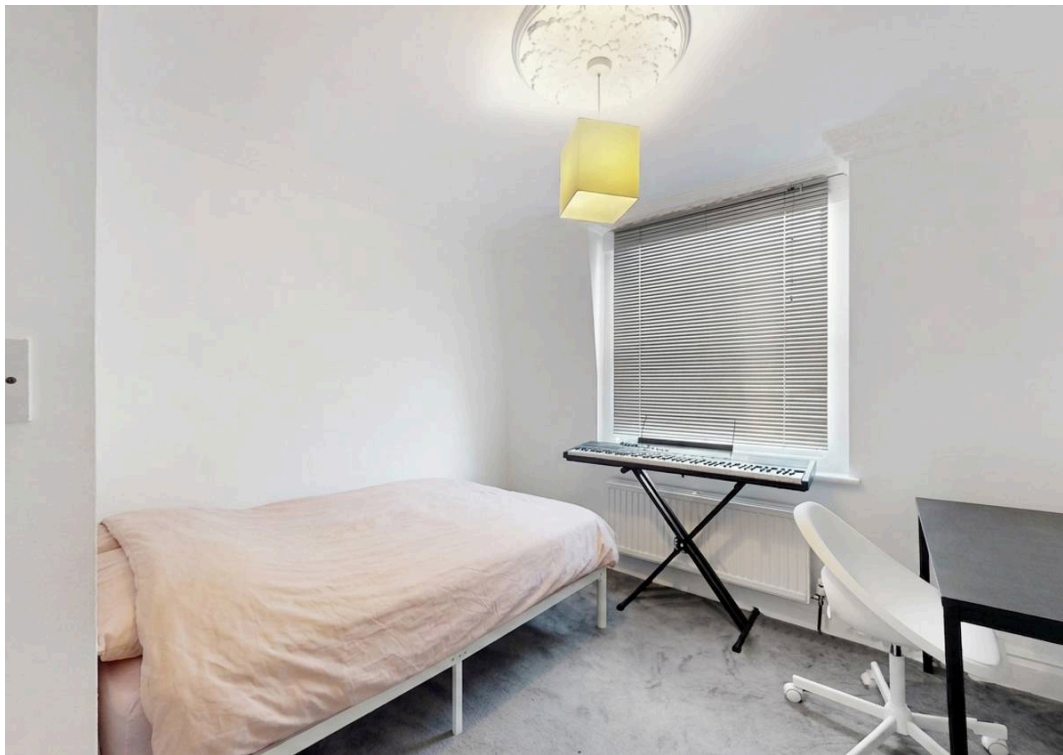
## Finchley Road, Hampstead, NW3

A well-presented three-bedroom split-level apartment located on Finchley Road, NW3. Offered fully furnished, the property comprises three spacious double bedrooms, a bright open-plan reception with fitted kitchen, and a modern bathroom.

Arranged over two floors, the apartment offers generous living space and a practical layout, making it ideal for professional sharers, students, or a family. Conveniently situated close to excellent transport links, local shops, restaurants, and amenities, with easy access to Central London.

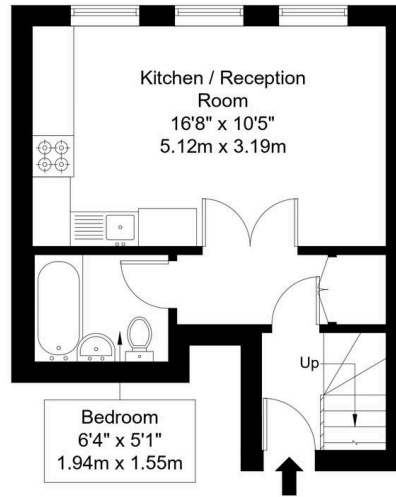
Available furnished and available on the 31st of August.



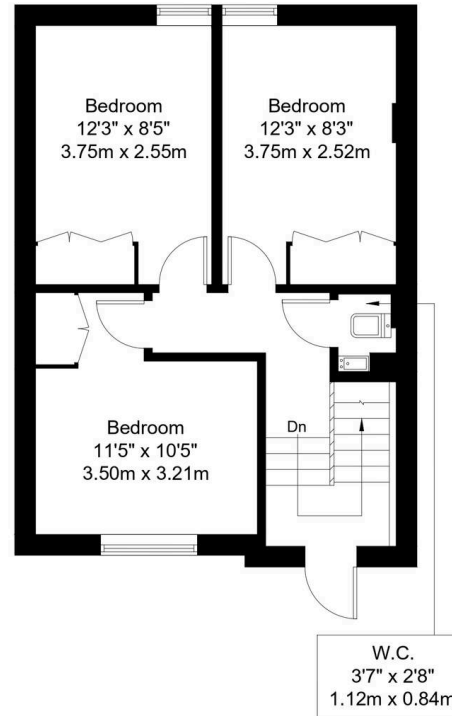


# Finchley Road, NW3 6BP

Approx Gross Internal Area = 65.25 sq m / 702 sq ft



Second Floor



Third Floor

Ref :

Copyright **BLEU  
PLAN**

The Floor plan is not to scale and measurements and areas shown are approximate and therefore should be used for illustrative purposes only. The plan has been prepared in accordance with the RICS code of Measuring Practice and whilst we have confidence in the information produced it must not be relied on. Maximum lengths and widths are represented on the floor plan. If there is any aspect of particular importance, you should carry out or commission your own inspection of the property.

Copyright @ BLEUPLAN



## Black Katz

22 West Hampstead Mews, London - NW6 3BB

02073285000 • [Thomas@blackkatz.com](mailto:Thomas@blackkatz.com) • [blackkatz.com/](http://blackkatz.com/)