



## West Park Road, UB2

£2,500 Per calendar month

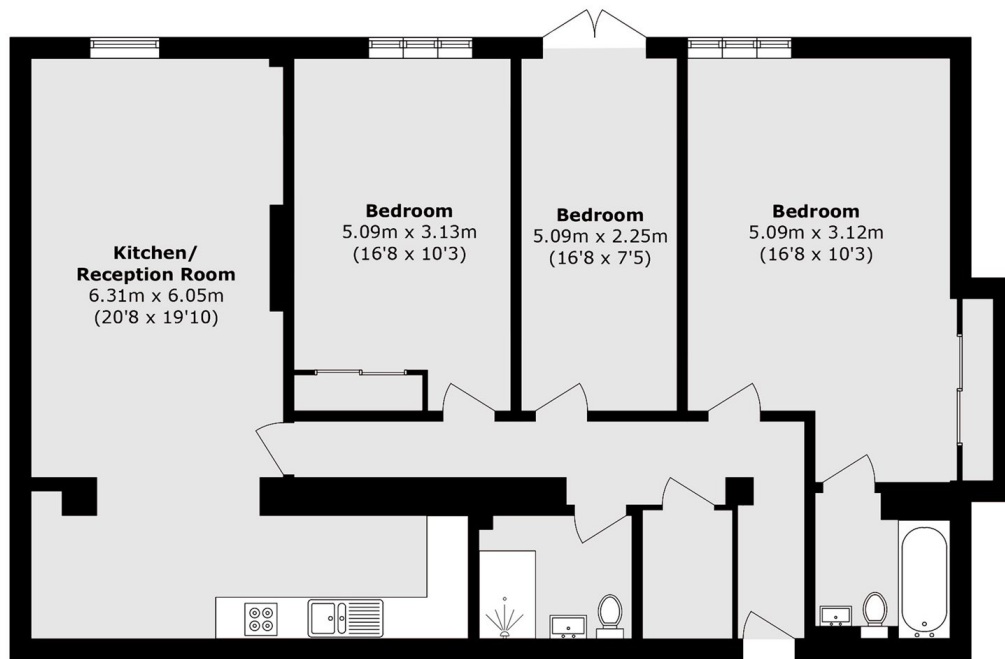
Spacious three-bedroom apartment in a secure gated development, featuring two bathrooms, a large reception area, high ceilings, and unallocated parking.

West Park Road is located just off Windmill Lane on the Hanwell border and convenient for Ealing Hospital and transport links along the Uxbridge Road.

### Features

- Three Bedrooms
- Two Bathrooms
- Gated Development
- Unallocated Parking
- Large Reception
- High Ceilings

# West Park Road, Southall, UB2



Total Area (approx.): 112.7sq. m (1213.1 sq. ft)