



WELLINGTON COURT

KNIGHTSBRIDGE SW1X



A spectacular
newly refurbished
lateral apartment
with views of
Hyde Park



This exceptional newly developed apartment is ideally situated in a prestigious Knightsbridge mansion building with direct views of Hyde Park. Extending to approximately 2,150 sq ft, the apartment offers generous entertainment and living spaces with fantastic volumes, high ceilings, and excellent natural light.

Key Features

- Direct views of Hyde Park
- High ceilings
- Natural light throughout
- Lift access
- 24-hour porterage
- Secure gated entrance
- Air conditioning
- Underfloor heating



Wellington Court is a highly regarded Knightsbridge mansion building, offering excellent privacy, security, and service. The building features a dedicated concierge, lift access, discreet security throughout, and a gated forecourt ideal for private drop-off and pick-up.





Accommodation

- Reception room
- Dining room
- Separate kitchen
- Library/snug
- Principal bedroom with en-suite bathroom
- Two further bedrooms
- Study/dressing room
- Guest WC



The apartment opens into a generous entrance hall that leads seamlessly into the main living and entertaining spaces. The formal reception and dining room form the centrepiece of the home, offering superb volume, high ceilings, and direct views across Hyde Park. Recently redeveloped and presented in excellent condition, the property represents a rare opportunity within this prestigious Knightsbridge building.



Approximate Gross Internal Area 2,171 sq ft / 201.77 sq m

CH: Ceiling height

Floorplan for guidance only, not to scale or valuations purposes. It must not be relied upon as a statement of fact. All measurements and areas are approximate and have been prepared in accordance with the current edition of the RICS Code of Measuring Practice.

© Alex Winship Photography Ltd.

Terms

Price

£7,750,000

Tenure

Leasehold

Local Authority

City of Westminster

Council Tax

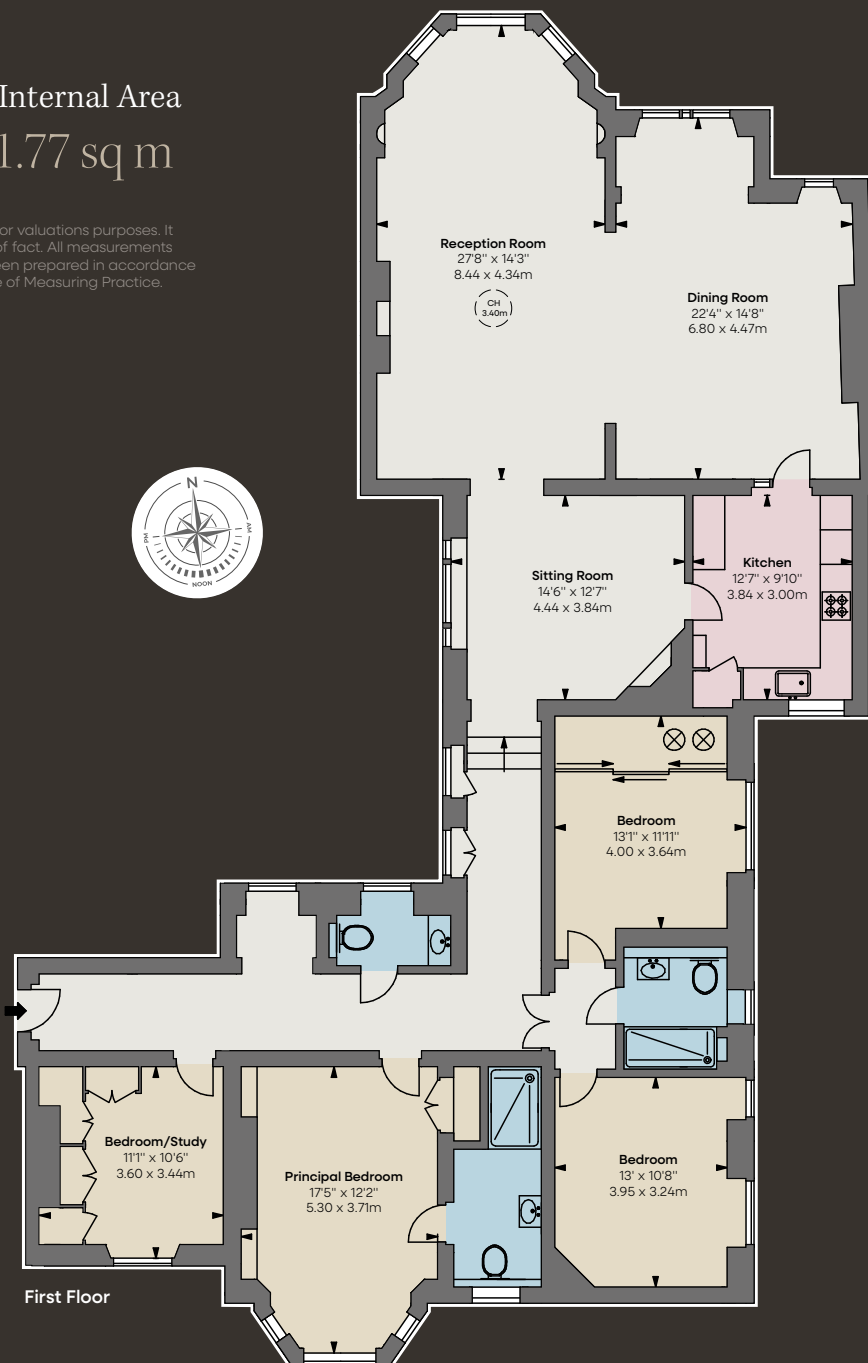
Band H

EPC

Rating D

Beauchamp Estates, their clients and any joint agents give notice that: 1. They are not authorised to make or give any representation or warranties in relation to the property either here or elsewhere, either on their own behalf or on behalf of their client or otherwise. They assume no responsibility for any statement that may be made in these particulars. These particulars do not form part of any offer or contract and must not be relied upon as statements or representations of fact. 2. Any Areas, measurements or distances are approximate. The text photographs and plans are for guidance only and are not necessarily comprehensive. It should not be assumed that the property has all necessary planning, building regulation or other consents and Beauchamp Estates have not tested any services, equipment or facilities. Purchasers must satisfy themselves by inspection or otherwise.

08/01/26 BEAU-260105-04-GG-FOC



Location

Positioned in the very heart of Knightsbridge, directly opposite the Bvlgari Hotel and moments from Hyde Park, the property sits within one of London's most prestigious areas. Harrods, Harvey Nichols, and the area's flagship designer boutiques are all a short walk away, alongside Michelin-starred dining and the world-class cultural institutions of South Kensington, including the V&A and the Natural History Museum. Knightsbridge Station (Piccadilly line) offers effortless access across central London, with South Kensington Station also close by.





BEAUCHAMP ESTATES

Beauchamp Estates
24 Curzon Street
Mayfair, London W1J 7TF

+44 (0)20 7499 7722
londonsales@beauchampestates.com
beauchampestates.com