



Margravine Road, W6

£461 Per week

A good sized, three double bedroom house, close to Hammersmith station and next to Charing Cross hospital.

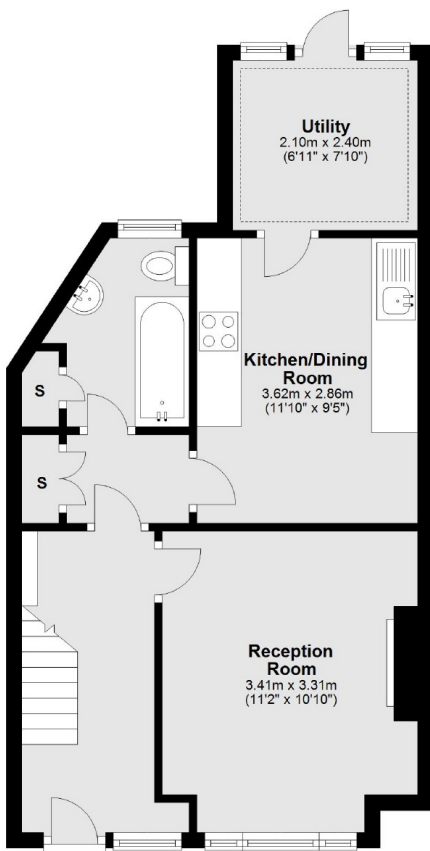
The house is located on Margravine Road in Hammersmith, close to Hammersmith tube station and next to Charing Cross hospital.

Features

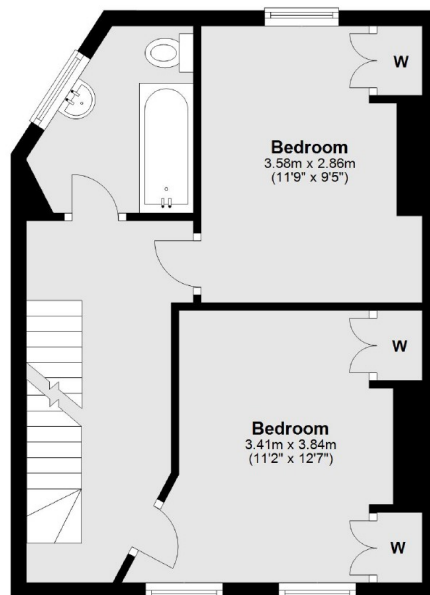
Three Bedrooms
Two Bathrooms
Close To Tube
Three Floors
Utility Room
Separate Reception Room

Margravine Road, London, W6

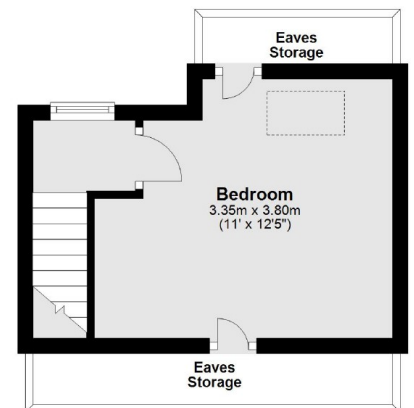
Ground Floor



First Floor



Second Floor



Total area: approx. 93.9 sq. metres (1011.2 sq. feet)

Contact

To arrange a viewing call our office on the number below or visit our website.



Energy Rating: E. We aim to make our particulars both accurate and reliable. However they are not guaranteed; nor do they form part of an offer or contract. If you require clarification on any points then please contact us, especially if you're traveling some distance to view. Please note that appliances and heating systems have not been tested and therefore no warranties can be given as to their good working order.