

## Linden House, Central Horsham

Offers Over £325,000

🛏 2 🚿 2 🛋 1



A stunning Top Floor Apartment located in Horsham Town Centre, boasting a 24ft Open Plan Living Area, 29ft South West facing Balcony, lifts to all floors and No Onward Chain.

Tenure: Leasehold

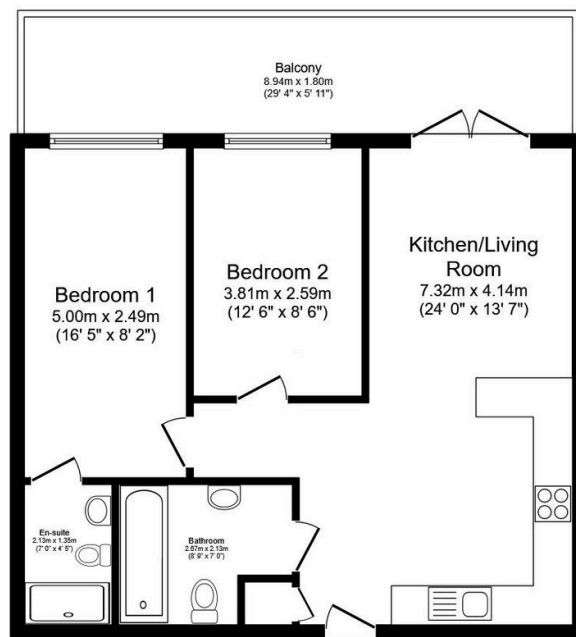
Lease Length: 125 years from 2015

Council Tax: Band C

EPC Rating: Current B - Potential B

## Key Features

- Watch Our Video Tour
- 29ft Private Balcony
- Two Double Bedrooms
- Lifts To All Floors
- No Onward Chain
- Impressive Top Floor Apartment
- 24ft Open Plan Kitchen/Living Area
- En Suite Shower Room To Principal Bedroom
- Secure Gated Underground Parking
- Prime Town Centre Location



**Floor Plan**

Floor area 61.5 sq.m. (662 sq.ft.)

Total floor area: 61.5 sq.m. (662 sq.ft.)

This floor plan is for illustrative purposes only. It is not drawn to scale. Any measurements, floor areas (including any total floor area), openings and orientations are approximate. No details are guaranteed, they cannot be relied upon for any purpose and do not form any part of any agreement. No liability is taken for any error, omission or misstatement. A party must rely upon its own inspection(s). Powered by [www.Propertybox.io](http://www.Propertybox.io)