



25 Harbord Road

Liverpool, L22 8QG

Asking price **£150,000**

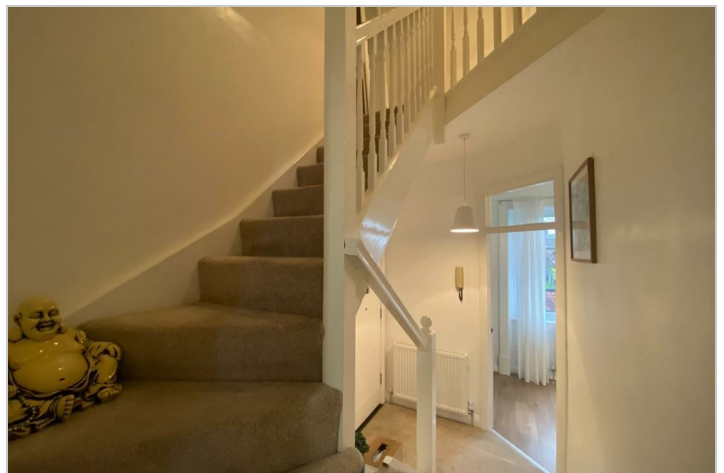
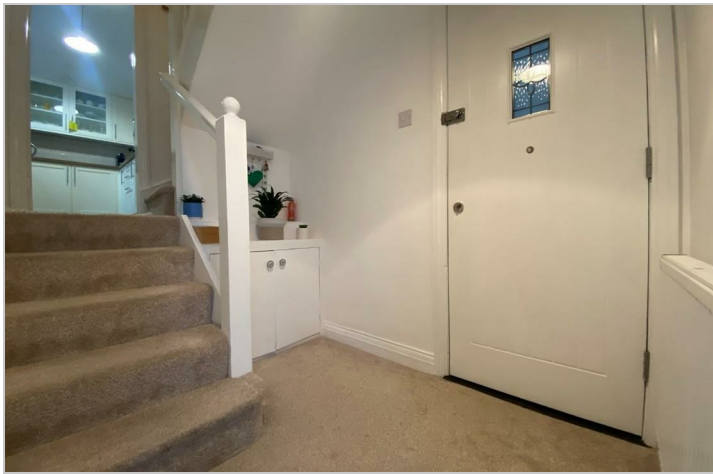


# 25 Harbord Road

Liverpool, L22 8QG

**Asking price £150,000**





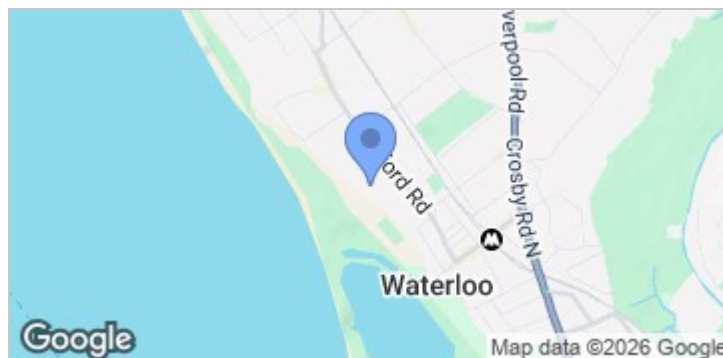
## Road Map



## Hybrid Map



## Terrain Map



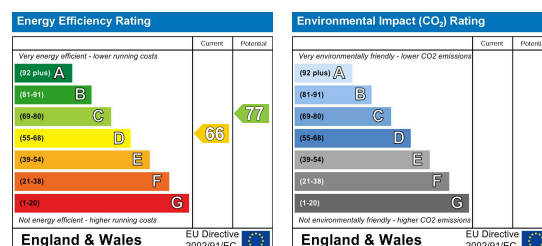
- **WELL-APPOINTED ONE-BEDROOM DUPLEX APARTMENT, PERFECT FOR FIRST-TIME BUYERS OR INVESTORS.**
- **FINISHED IN NEUTRAL TONES THROUGHOUT, CREATING A LIGHT AND WELCOMING ATMOSPHERE.**
- **A STYLISH, WELL-DESIGNED SEPARATE KITCHEN FEATURING QUALITY FITTINGS, AND AMPLE WORKSPACE.**
- **A SPACIOUS DOUBLE BEDROOM SITUATED AT THE REAR, OFFERING A PEACEFUL OUTLOOK AND PLENTY OF NATURAL LIGHT.**
- **WELL-APPOINTED FAMILY BATHROOM FEATURING A SHOWER OVER THE BATH AND A LARGE VANITY UNIT WITH EXCELLENT STORAGE SPACE.**
- **THE PROPERTY BENEFITS FROM OFF-ROAD PARKING LOCATED TO THE REAR, PROVIDING CONVENIENT AND SECURE ACCESS.**
- **IDEALLY LOCATED WITHIN EASY REACH OF THE BEACH, SHOPS, AND A RANGE OF LOCAL AMENITIES.**
- **OFFERED WITH NO ONWARD CHAIN, ALLOWING FOR A SMOOTH AND SPEEDY SALE**

## Viewing

Please contact our Crosby Office on 01519093003 if you wish to arrange a viewing appointment for this property or require further information.

These particulars, whilst believed to be accurate are set out as a general outline only for guidance and do not constitute any part of an offer or contract. Intending purchasers should not rely on them as statements of representation of fact, but must satisfy themselves by inspection or otherwise as to their accuracy. No person in this firm's employment has the authority to make or give any representation or warranty in respect of the property.

## Energy Efficiency Graph



82 Coronation Road, Crosby, Liverpool L23 5RH

Tel: 0151 909 3003  
Email: crosby@abode.group.co.uk  
Web: www.abode-group.co.uk

6 Allerton Road, Mossley Hill, Liverpool, L18 1LN

Tel: 0151 601 3003  
Email: allerton@abode-group.co.uk  
Web: www.abode-group.co.uk

2 Chapel Lane, Formby, Liverpool, L37 4DU

Tel: 01704 827 402  
Email: formby@abode-group.co.uk  
Web: www.abode-group.co.uk