



House

# 24B MEADOWBANK ROAD, CHATHAM, ME4 4PD

Per Month

# £1,100

## FEATURES

- Spacious 2-bedroom property
- Bright and spacious living area
- Convenient central Chatham location
- Walking distance to Chatham Station
- Close to shops, supermarkets, and local amenities
- Available now



# BEXLEY HOMES

# 0 Bedroom House located in Chatham

Spacious 2-Bedroom Property To Rent – Meadowbank Road, Chatham, ME4

Situated in a convenient and well-connected part of Chatham, this spacious two-bedroom property offers generous living accommodation, ideal for professionals, couples, or small families seeking comfort and practicality.

The property benefits from bright and airy interiors with well-proportioned rooms throughout, creating a comfortable and welcoming home environment.

Located on Meadowbank Road, the property is within easy reach of Chatham town centre, offering a wide range of local amenities including supermarkets, restaurants, cafés, gyms, and retail shopping facilities. The Pentagon Shopping Centre and Chatham High Street are both nearby.

Excellent transport connections make this an ideal location for commuters. Chatham Railway Station is approximately a 10–15 minute walk away and

Call us on

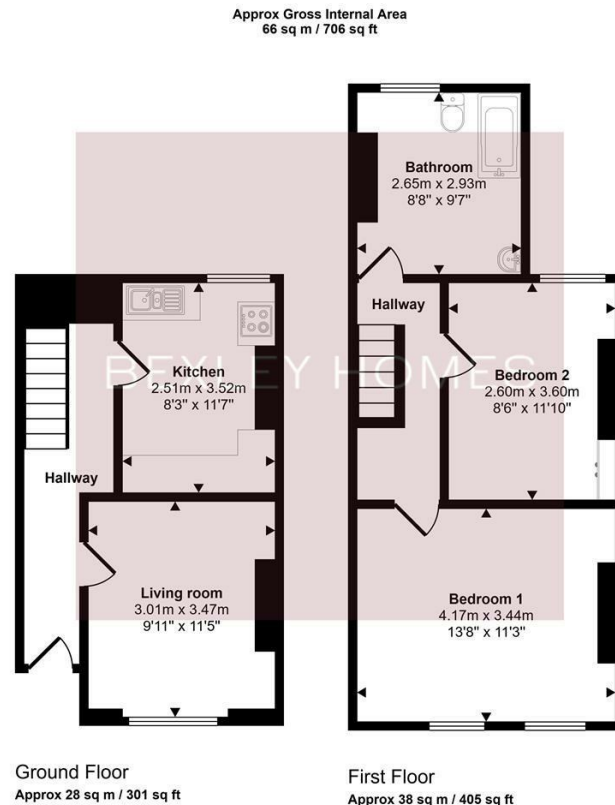
01322 948500

Belvedere@bexleyhomes.co.uk

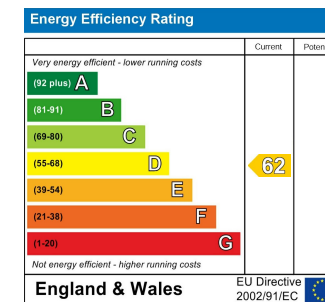
www.bexleyhomes.co.uk

Council Tax Band

A



This floorplan is only for illustrative purposes and is not to scale. Measurements of rooms, doors, windows, and any items are approximate and no responsibility is taken for any error, omission or mis-statement. Icons of items such as bathroom suites are representations only and may not look like the real items. Made with Made Snappy 360.



Agents Note: Whilst every care has been taken to prepare these particulars, they are for guidance purposes only. All measurements are approximate and are for general guidance purposes only and whilst every care has been taken to ensure their accuracy, they should not be relied upon and potential buyers are advised to recheck the measurements.

BEXLEY HOMES