



Pryor Road, Kettering, NN15 7FD

Kettering

£925 pcm

Deposit: £925

Furnishing: Unfurnished

'Warm Welcome'

Situated in a convenient location close to local amenities, shops and transport links, this well-presented two bedroom flat offers modern living throughout.

The accommodation comprises a spacious and bright lounge providing ample room for both living and dining areas. The modern fitted kitchen is well-appointed with a range of contemporary units and work surfaces, offering both style and practicality.

There are two good-sized bedrooms, with the principal bedroom benefiting from a fitted wardrobe providing useful storage. The property is served by a modern family bathroom fitted with a three-piece suite including a bath with shower over.

Externally, the property benefits from one allocated parking space to the rear, adding further convenience.

With its modern interior, generous living space and excellent proximity to local amenities, this property must be viewed to be fully appreciated.

Available now!.

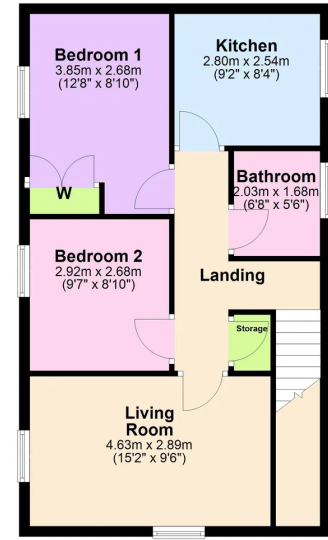
EPC rating B

Council Tax Band: B

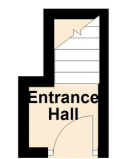




First Floor
Approx. 55.1 sq. metres (593.1 sq. feet)




Ground Floor
Approx. 2.7 sq. metres (28.7 sq. feet)



Total area: approx. 57.8 sq. metres (621.7 sq. feet)

Energy Efficiency Rating

	Current	Potential
<i>Very energy efficient - lower running costs</i>		
(92 plus) A		
(81-91) B	83	83
(69-80) C		
(55-68) D		
(39-54) E		
(21-38) F		
(1-20) G		
<i>Not energy efficient - higher running costs</i>		
England & Wales	EU Directive 2002/91/EC	



Henderson Connellan Kettering office 01536 417888 ketteringsales@hendersonconnellan.co.uk

Disclaimer: These particulars do not form part of any offer or contract and should not be relied upon as statements or representations of fact. Any areas, measurements of distances are approximate. The text, photographs and plans are for guidance only and are not necessarily comprehensive.

