

OVER 60?

Secure this property
for up to **59% less!**



Guide Price

£625,000

Freehold

4x  2x  2x 

Court Tree Drive, Eastchurch, Kent, ME12

Wards

Helping you move forwards



Main features

- Sweeping driveway up to the double garage
- Family bathroom plus en-suite shower room to the main bedroom
- Modern kitchen with integrated appliances plus a utility room
- Generous size front and rear gardens
- Lounge and dining room plus a conservatory to the rear

Accommodation

GROUND FLOOR

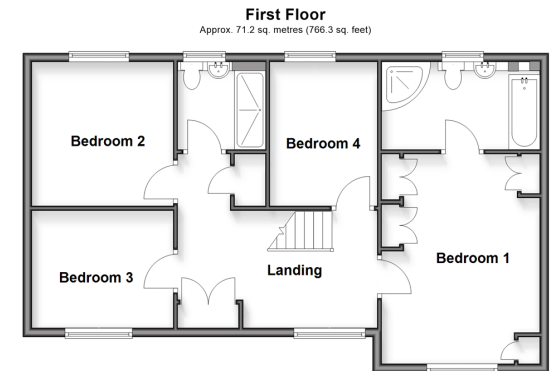
- Entrance Hall
- Downstairs Cloakroom: 5'4 x 4'3 (1.63m x 1.30m)
- Lounge: 24'10 x 11'6 (7.57m x 3.51m)
- Kitchen: 18'3 x 8'10 (5.57m x 2.69m)
- Utility Room: 9'9 x 5'3 (2.97m x 1.60m)
- Dining Room: 12'0 x 11'0 (3.66m x 3.36m)
- Family Room: 13'9 x 12'9 (4.19m x 3.89m)
- Conservatory: 10'9 x 10'5 (3.28m x 3.18m)

FIRST FLOOR

- Landing
- Bedroom 1: 15'2 x 11'7 (4.63m x 3.53m)
- En-suite Shower Room: 11'7 x 6'7 (3.53m x 2.01m)
- Bedroom 2: 10'9 x 10'3 (3.28m x 3.13m)
- Bedroom 3: 11'1 x 7'9 (3.38m x 2.36m)
- Bedroom 4: 10'2 x 8'5 (3.10m x 2.57m)
- Shower Room: 6'5 x 6'4 (1.96m x 1.93m)

OUTSIDE

- Front Garden
- Front Driveway
- Double Garage
- Rear Garden



Call Sheerness - 01795 664651 ■ wardsof Kent.co.uk

- Legal advice should be taken to verify fixtures/fittings, planning, alterations and/or lease details
- Appliances & services are untested, dimensions are approximate and floor plans are not to scale
- Through a Homewise Home For Life Plan people aged 60+ can secure this property for up to 50% less, by purchasing a Lifetime Lease.



11635770/20251027/DS/JLS