



## Shepherds Bush Road, W6

### £400,000

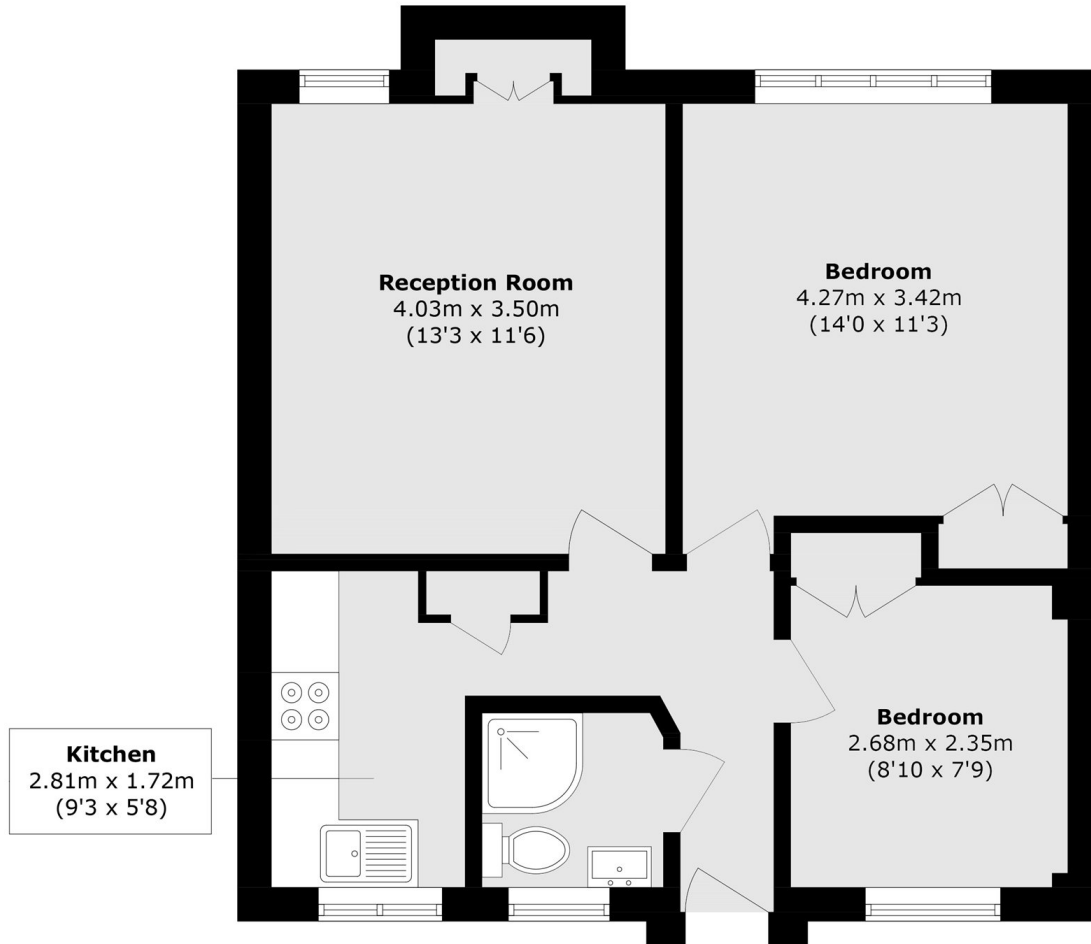
A bright and spacious two double bedroom flat in a sought-after Art Deco building. Modern throughout with parquet flooring and acoustic glazing. Offered chain-free, ideal for first-time buyers, investors or as a pied-à-terre. Benefits from a private balcony.

The Grampians is superbly located for easy access to Westfield shopping centre, Chiswick and Notting Hill. The nearest station is Shepherds Bush, and the motorist will gain easy access into London via the A40/M40.

### Features

- Art Deco Building
- Share Of Freehold
- Two Double Bedrooms
- Lift Serviced
- Portered Block
- No Onward Chain

# Shepherds Bush Road, London, W6



Total area (approx.): 50.2 sq. m (540.4.0 sq. ft)