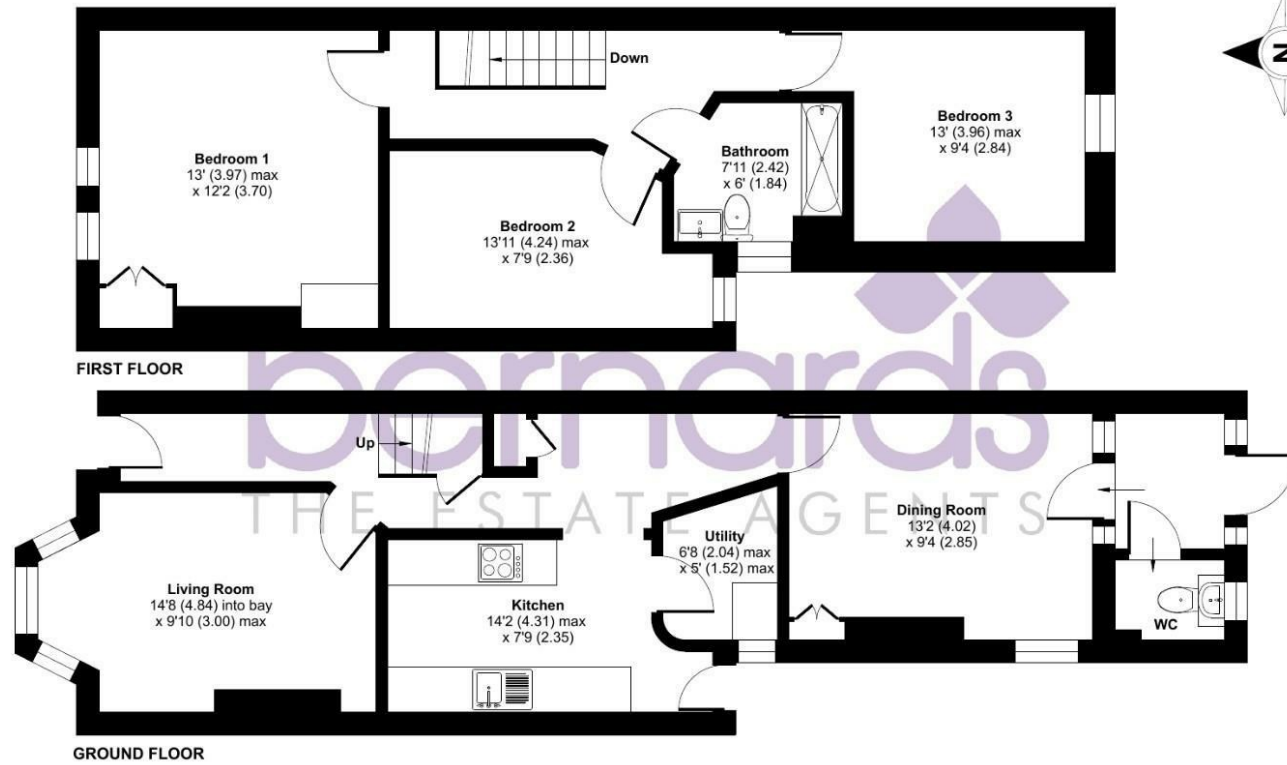
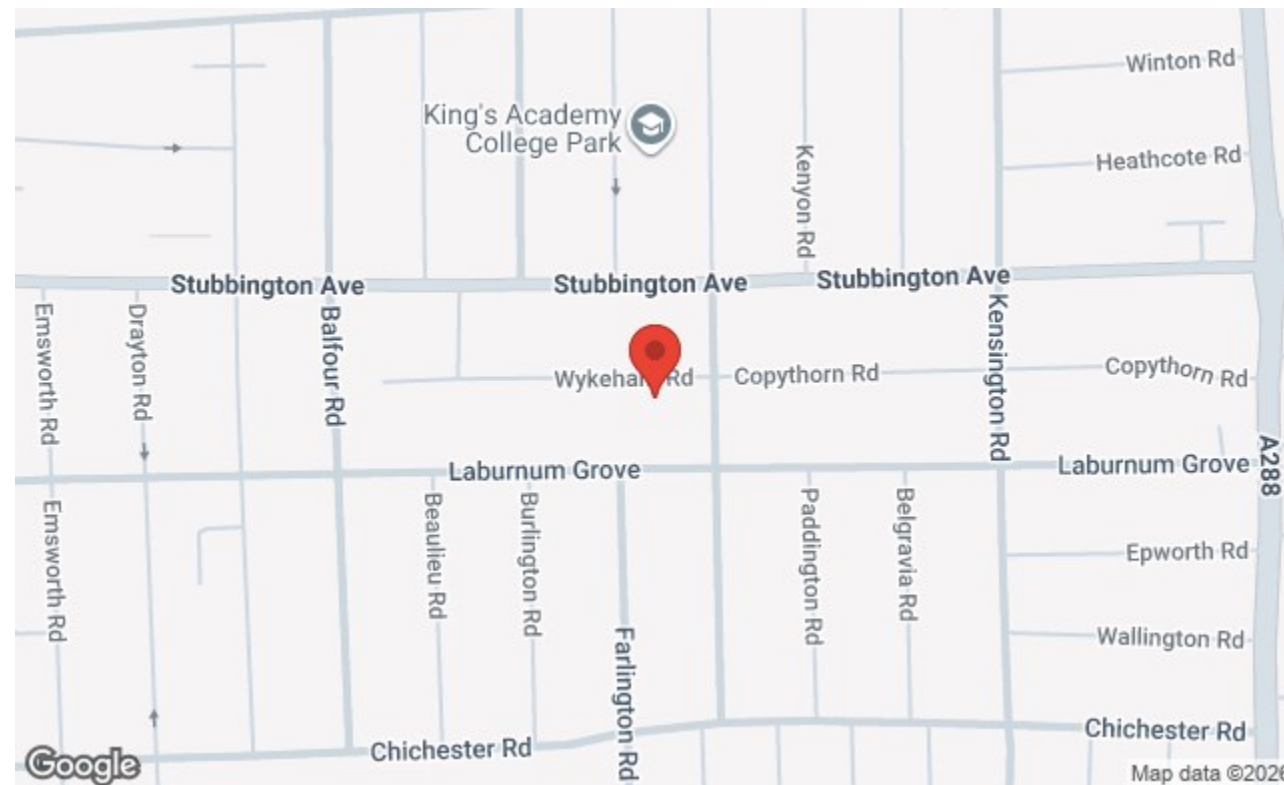


Wykeham Road, Portsmouth, PO2

Approximate Area = 1074 sq ft / 99.7 sq m
For identification only - Not to scale



Floor plan produced in accordance with RICS Property Measurement 2nd Edition, Incorporating International Property Measurement Standards (IPMS2 Residential). © nichecom 2026. Produced for Bernards Estate and Letting Agents Ltd. REF: 1456526



129 London Road, Portsmouth, Hampshire, PO2 9AA
t: 02392 728090



Offers In Excess Of £270,000

Wykeham Road, Portsmouth PO2 0EG



HIGHLIGHTS

- ❖ BAY & FORECOURT
- ❖ THREE DOUBLE BEDROOMS
- ❖ MODERN FITTED KITCHEN
- ❖ UTILITY ROOM
- ❖ TWO RECEPTION ROOMS
- ❖ DOWNSTAIRS TOILET
- ❖ UPSTAIRS BATHROOM
- ❖ LOW MAINTENANCE GARDEN
- ❖ REFURBISHED THROUGHOUT
- ❖ IDEAL FIRST HOME

Situated in Wykeham Road, this beautiful three-bedroom terraced home offers a perfect blend of comfort and modern living. The property boasts three spacious double bedrooms, providing ample space for families or those seeking extra room for guests or a home office.

Upon entering, you are welcomed by two inviting reception rooms, ideal for both relaxation and entertaining. The modern fitted kitchen is a standout feature, complete with a utility area that enhances functionality and convenience for daily living.

The home is designed with practicality

in mind, featuring an upstairs bathroom and a downstairs toilet, ensuring that the needs of a busy household are well catered for. Outside, the low maintenance garden presents a wonderful opportunity for outdoor enjoyment without the burden of extensive upkeep, making it perfect for those with a busy lifestyle.

This property is not only a comfortable family home but also a fantastic opportunity for anyone looking to settle in a vibrant area of Portsmouth. With its thoughtful layout and modern amenities, this terraced house is sure to appeal to a wide range of buyers. Don't miss the chance to make this lovely home your own.

Call today to arrange a viewing

02392 728090

www.bernardsestates.co.uk



