

Head Office:
Dixon Kelley Estate Agents
1 Penn Court
Station Road, West Moors
Dorset. BH22 0JJ

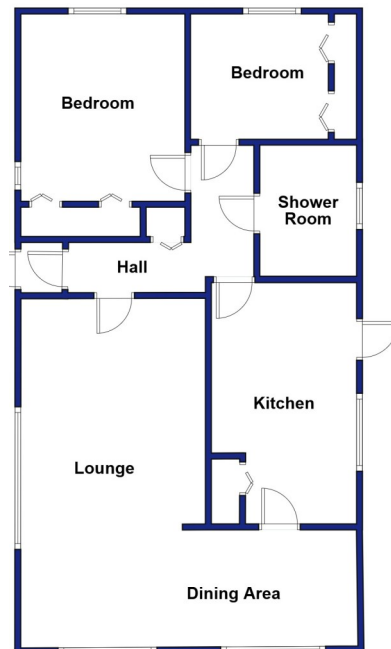
Telephone: 01202 877511

DORSET PARK HOMES

DRAFT

www.dorsetparkhomes.com

38 Hillbury Park, Hillbury Road, Alderholt, Fordingbridge. SP6 3BW



This drawing has been prepared for diagrammatic purpose only. Not to scale.

Twin Unit Park Home in need of up-dating

2-Bedroom Park Home - approx 36' x 20'

Accommodation & approximate room dimensions:

- Omar 'Ashdale' Park Home circa 1979
- Hall: Cloaks cupboard.
- Lounge/Dining Room: approx 19'9" x 19'1" overall max. 2-Bay windows.
- Kitchen: approx 13'8" x 8'2". Range of floor and wall cupboards. Cooker point. Space for fridge/freezer & washing machine. Oil fired boiler & airing cupboard. Door to garden.
- Bedroom 1: approx 12'7" x 9'4" including fitted wardrobes
- Bedroom 2: approx 9'4" x 7'1" including fitted wardrobes.
- Shower Room: Walk-in shower with electric shower unit, wash basin & WC.
- Oil Central Heating (system untested)
- PVCu Double-Glazing
- Private Patio Garden enjoying a sunny aspect. Metal shed.
- Parking
- Age Restriction 45+ Pets Considered
- Popular Residential Park in semi-rural location near to local amenities and within a short drive to Fordingbridge town centre.

'Pet Friendly' Park



Kitchen



Lounge



Dining Area



Private Garden

Price: £80,000

Pitch Fee: approx £269.01 per month

Subject to Annual Review

Council Tax Band: 'A'

Tenure: 1983 Mobile Homes Act Agreement

VIEWING STRICTLY BY APPOINTMENT WITH THE VENDOR'S AGENT Dorset Park Homes 01202 877511

IMPORTANT NOTE: These particulars are believed to be correct but their accuracy is not guaranteed. They do not form part of any contract. Nothing in these particulars shall be deemed to be a statement that the property is in good structural condition or otherwise, nor that any of the services, appliances, equipment or facilities are in good working order or have been tested. Purchasers should satisfy themselves on such matters prior to purchase Ref.W05182

The recommended specialist in Park Home sales
Partner: Simon Dixon

