

# HJC

HIGHER VALUES



## Thorkhill Gardens

Thames Ditton, KT7 0UP

Guide Price £750,000

A modern detached 3 bedroom family home in a popular cul de sac in Thames Ditton, with scope for improvement and extension, subject to the relevant consents. The ground floor comprises a welcoming hallway off-which is the guest WC, a double length living/dining room, which retains beautiful original wood-block flooring, and a good-sized kitchen. Upstairs are three well-proportioned bedrooms and the family bathroom.

With a pretty south east-facing garden, off-street parking and a separate garage, this house is offered to the market with no onward chain.

- Modern detached family house
- Off-street parking and garage
- Potential to modernise/extend STPP
- No onward chain
- Cul de sac location
- 3 good bedrooms
- Original wood block floor
- Vacant possession

Thorkhill Gardens KT7

Approximate Gross Internal Floor Area = 94.7 sq m / 1019 sq ft  
Garage Area = 12.7 sq m / 137 sq ft  
Total Area = 107.4 sq m / 1156 sq ft

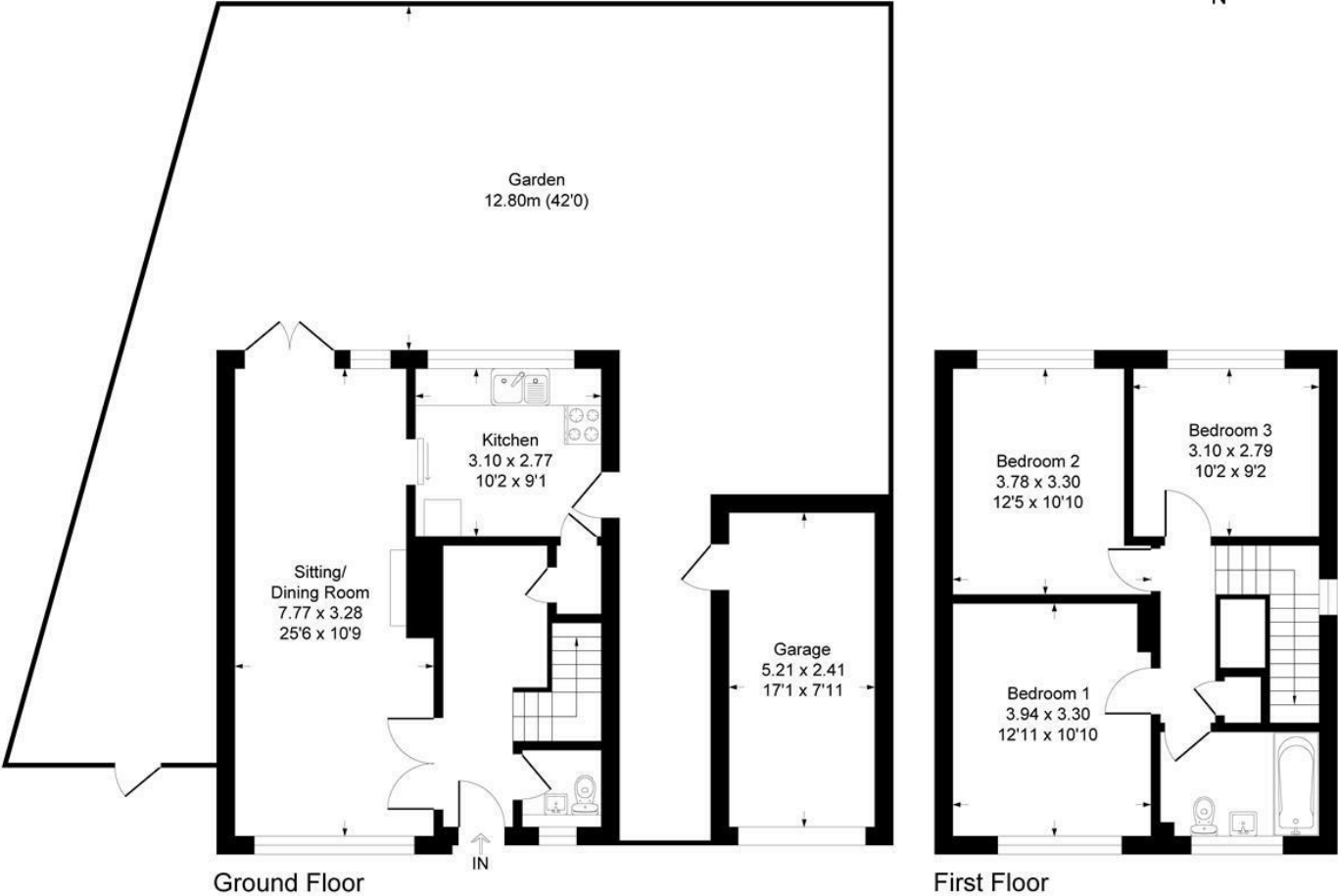
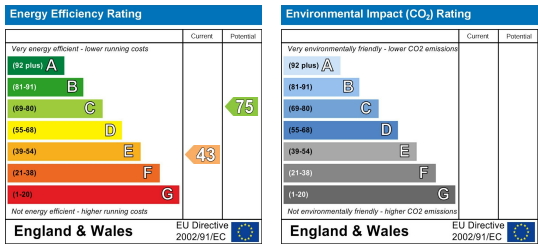


Illustration for identification purposes only, measurements are approximate, not to scale.  
Produced By Esjay Property Marketing

Energy Efficiency Graph



These particulars, whilst believed to be accurate are set out as a general outline only for guidance and do not constitute any part of an offer or contract. Intending purchasers should not rely on them as statements of representation of fact, but must satisfy themselves by inspection or otherwise as to their accuracy. No person in this firms employment has the authority to make or give any representation or warranty in respect of the property.