



Spencer Munson
128 High Road
Loughton IG10 4BE

Tel: 020 8502 2222

loughton@spencermunson.co.uk
Website: spencermunson.co.uk



Bryony Close, Loughton, IG10

**** TWO BEDROOM MAISONETTE** ** TWO DOUBLE BEDROOMS** ** LARGE LIVING ROOM** **
SEPARATE KITCHEN** **UNFURNISHED** ** ALLOCATED PARKING SPACE** ** AVAILABLE 10TH
APRIL 2026 ON A MINIMUM 12 MONTHS TENANCY** ** EPC RATING C COUNCIL TAX BAND C****

Rent: £1,595 - Monthly



Bryony Close, Loughton, IG10**Reception****Kitchen****Bedroom 1****Bedroom 2****Bathroom**

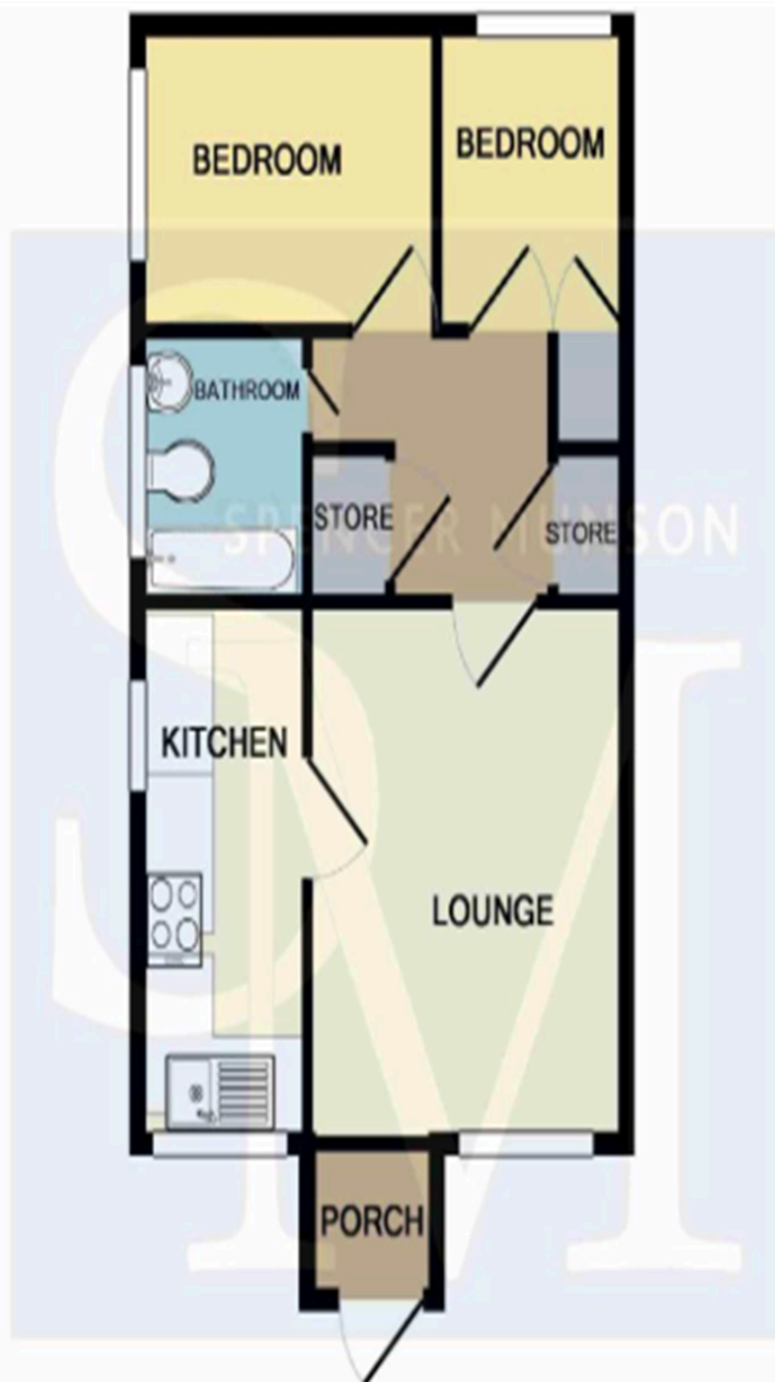
Energy Efficiency Rating

	Current	Potential
Very energy efficient - lower running costs		
92-100 A		
81-91 B		
69-80 C	69	76
55-68 D		
39-54 E		
21-38 F		
1-20 G		
Not energy efficient - higher running costs		

England & Wales

EU Directive
2002/91/EC

Spencer Munson are pleased to offer you this two bedroom Ground Floor Maisonette. This property benefits from having a large living room with a separate fitted kitchen with white goods, there is also two double bedrooms and a family bathroom. This attractive home is situated just a short walk Debden Central Line station and also local to shops and amenities. Allocated parking space, offered unfurnished and available 10th April 2026. EPC Rating C Council Tax Band C

Bryony Close, Loughton, IG10

Whilst every attempt has been made to ensure the accuracy of the floor plan contained here, measurements of doors, windows, rooms and any other items are approximate and no responsibility is taken for any error, omission, or mis-statement. This plan is for illustrative purposes only and should be used as such by any prospective purchaser. The services, systems and appliances shown have not been tested and no guarantee as to their operability or efficiency can be given
Made with Metropix ©2016

Disclaimer

These particulars are intended to give a fair and substantially correct overall description for the guidance of intending tenants/purchasers and do not constitute an offer or part of a contract. Prospective tenants/purchasers and/or lessees should seek their own professional advice. All descriptions, dimensions, reference to condition, fixtures, fittings and necessary permissions for use and occupation and other details are given in good faith and are believed to be correct. However, intending tenants/purchasers should not rely on them as statements or representations of fact, but must satisfy themselves by inspection or otherwise as to the correctness of each of them. Fixtures and fittings shown in pictures and on viewings may well not be included in any tenancy/sale and any prospective tenant/purchaser must clarify this for themselves. All measurements and floorplans are approximate and produced as a guide in good faith. Please note that some of the furniture and decor items shown in these images have been digitally added using AI technology for illustrative purposes. The actual property may differ in appearance. Prospective buyers or renters are encouraged to visit the property in person to get an accurate representation.