



Matheson Road, W14

£565,000

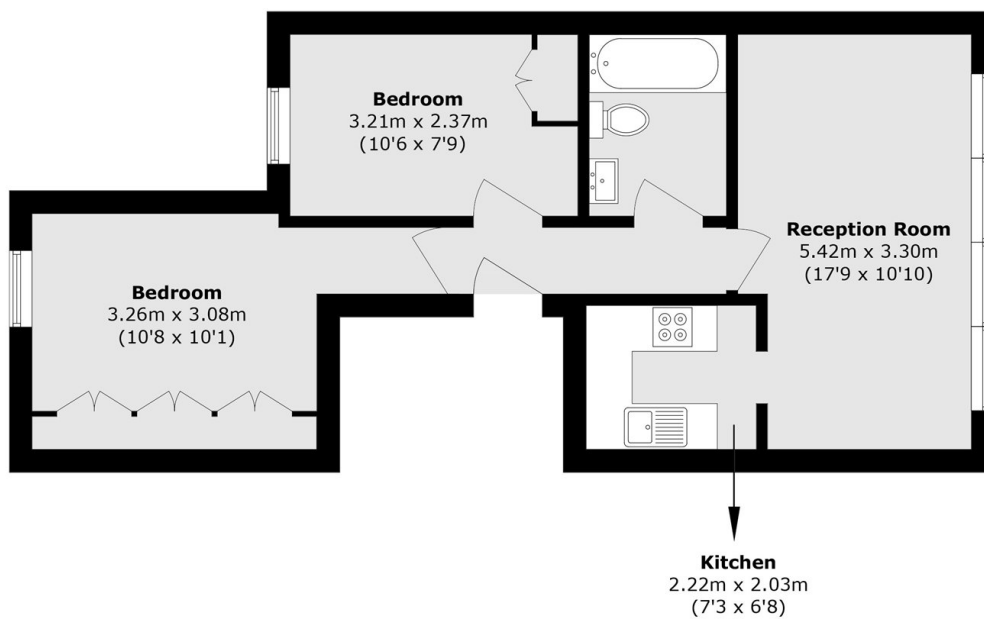
A bright and spacious two bedroom apartment situated on a popular residential road in West Kensington. Situated on the second floor with a large living and kitchen area, excellent storage and a share of the freehold.

Matheson Road is moments away from all of the transport links, shops, cafés and restaurants that West Kensington, Olympia and Kensington High Street have to offer.

Features

- No Chain
- Second Floor
- Two Bedrooms
- Share Of Freehold
- Close To Tubes
- Popular Location

Matheson Road, London, W14



Total area (approx.): 50.8 sq. m (546.8 sq. ft)