

Your Logo

## Little Lane, Bradwell, Hope Valley, S33 9JF

Guide Price £500,000

3 1 2



Holly Cottage is a delightful three-bedroom detached stone cottage situated in the heart of the popular Peak District village of Bradwell. Rich in character throughout, the property features higher-than-average ceilings, two charming reception rooms, a bespoke fitted kitchen, utility room and a separate study. Upstairs offers two spacious double bedrooms, a further bedroom and a well-appointed family bathroom with a bath and separate shower.

The cottage enjoys stunning countryside views and overlooks beautifully established gardens, providing a peaceful setting to enjoy throughout the seasons. An additional garden across the lane offers further potential and flexibility and a shed. Rare for a village property, Holly Cottage also benefits from private off-road parking for two cars and an electric charging point. Bradwell offers a welcoming community, excellent local amenities and convenient access to Sheffield, Manchester and the wider Peak District.

# Your Logo

- Detached stone cottage in the heart of Bradwell
- Comes with a private driveway with parking for two cars and electric charging point
- Three-bedroom character home
- Two charming reception rooms
- Bespoke fitted kitchen with additional utility room
- Beautifully established gardens plus additional garden across the lane
- Higher-than-average cottage ceilings creating a spacious feel
- Dedicated study/home office
- Bespoke double glazed windows
- Stunning Peak District countryside views

## HOLLY COTTAGE

APPROXIMATE GROSS INTERNAL AREA = 113.0 SQ M / 1216 SQ FT

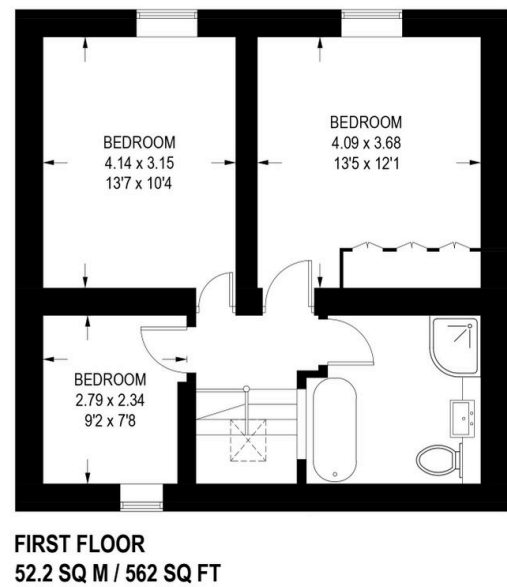
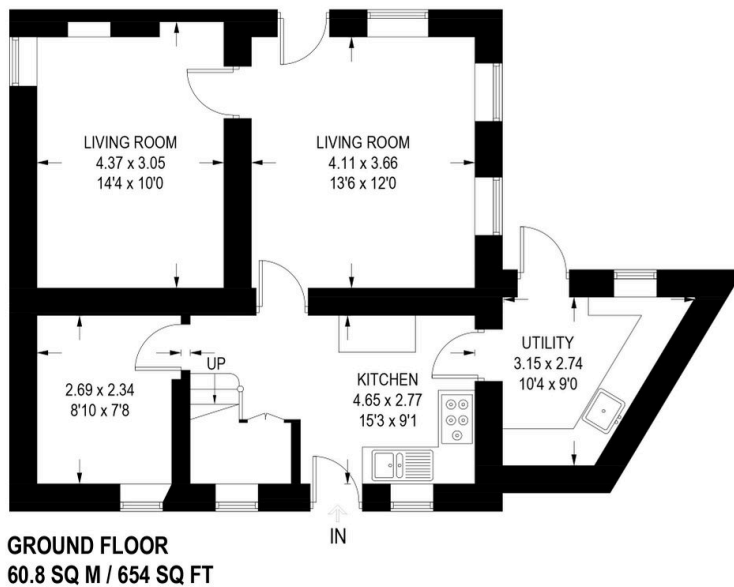


Illustration is for identification purposes only, measurements are approximate, not to scale.