



## Longland Crescent, Bury, Ramsey, Huntingdon, PE26 2SF

Popular Village Location - Modern Q Type House - 1 Double Bedroom - Open Plan Kitchen / Living -  
Ground Floor WC - First Floor En Suite Shower Room - Driveway - Call To View (01354) 696700

**£175,000**



#### Ground Floor

Open Plan Kitchen / Living  
5.22m (17'2") x 4.36m (14'4")  
Fitted with a matching range of  
base and eye level units with  
worktop space over, stainless  
steel sink, integrated  
fridge/freezer, plumbing for  
washing machine, gas hob with  
extractor hood over and oven,  
storage cupboard, two radiators,  
part carpet, part vinyl flooring,  
stairs to first floor and two  
double glazed windows to side.

WC  
Double glazed window to front,  
low level WC, pedestal wash  
hand basin and radiator.

#### First Floor

Bedroom  
5.24m (17'2") x 4.63m  
(15'1") max  
Double glazed window to front,  
fitted carpet, boiler cupboard,  
radiator and door to:

En-suite  
Fitted with three-piece suite  
comprising with shower,  
pedestal wash hand basin and  
low-level WC, heated towel rail,  
ceiling spotlights and double  
glazed window to side.

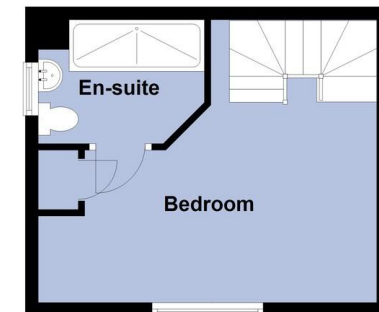
Outside  
The property has off road  
parking to the side.

EPC Rating: B

#### Ground Floor



#### First Floor



Call to arrange a viewing **01354 696700**

**T Payne & Co**  
SALES & LETTINGS



Agents Notes: Whilst every care has been taken to prepare these sales particulars, they are for guidance purposes only. All measurements are approximate and for general guidance purposes only and whilst every care has been taken to ensure their accuracy, they should not be relied upon and potential buyers are advised to recheck the measurements.