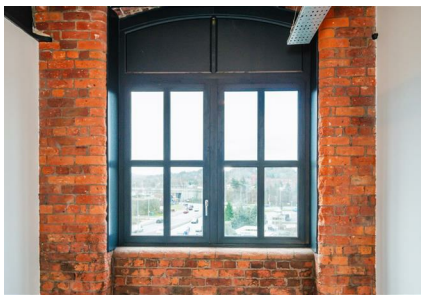
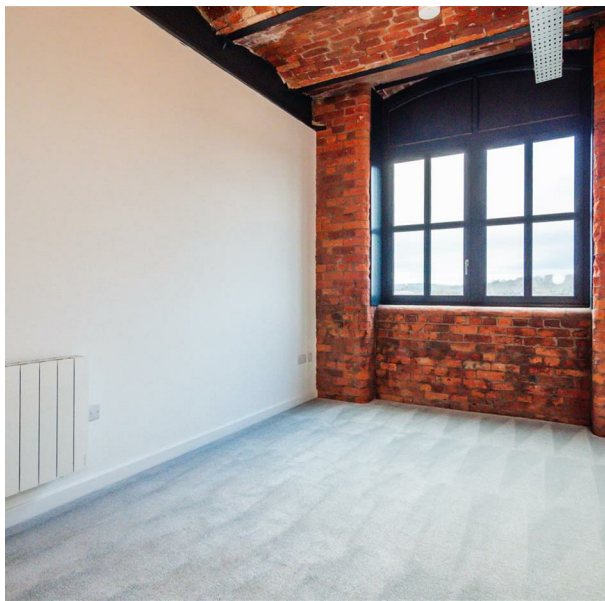


204 Meadow Mill Water Street, Portwood, Stockport, SK1 2AJ
£1,200 Per Month
Council Tax Band: New Build



A stunning two double bedroom apartment in the newly developed mill conversion Meadow Mill, situated on the 2nd floor offered on an unfurnished basis.

This mill converted development is home to 213 apartments combining original features with modern furnishings. The apartment is made up of two double bedrooms a three piece bathroom suite with shower over bath and an open plan kitchen and living area.

The property is situated just in front of the Reddish Vale country park and easy access onto the Manchester outer ring road. Conveniently located next door to the development is a Tesco super store and other amenities



ORLANDO REID

St Johns Court 19b Quay Street, Manchester, M3 3HN

01616760099

manchester@orlandoreid.co.uk

<https://www.orlandoreid.co.uk/manchester/>

Energy Efficiency Rating		
	Current	Potential
<i>Very energy efficient - lower running costs</i>		
(92 plus) A		
(81-91) B		
(69-80) C		
(55-68) D		
(39-54) E		
(21-38) F		
(1-20) G		
<i>Not energy efficient - higher running costs</i>		
England & Wales	EU Directive 2002/91/EC	