



Upper Brockley Road, SE4

£2,100 Per calendar month

A well presented and spacious two double bedroom, two bathroom split level top floor flat on this prime road in SE4. Including a large living room, modern fitted kitchen/diner, and ample storage throughout.

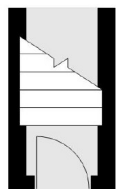
Located on Upper Brockley Road you are within walking distance to Brockley station as well as all amenities that Brockley Road has to offer.

Features

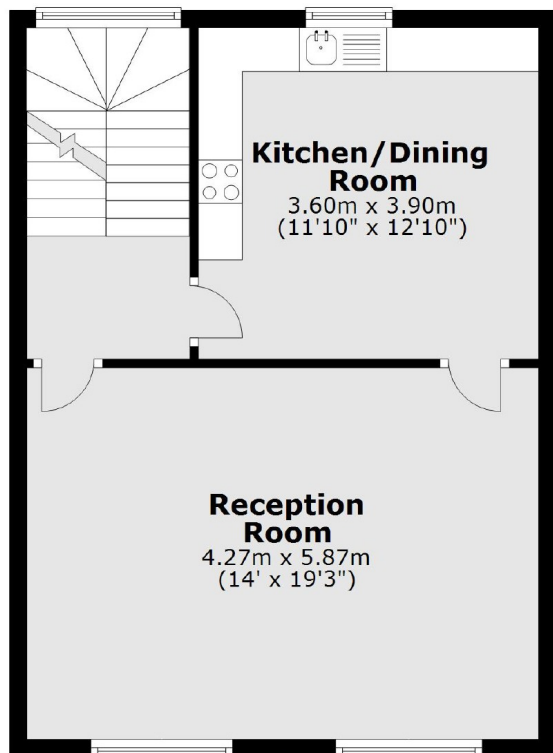
- Conservation Area
- Two Double Bedrooms
- Two Bathrooms
- Split Level
- Close To Station
- Part-Furnished

Upper Brockley Road, London, SE4

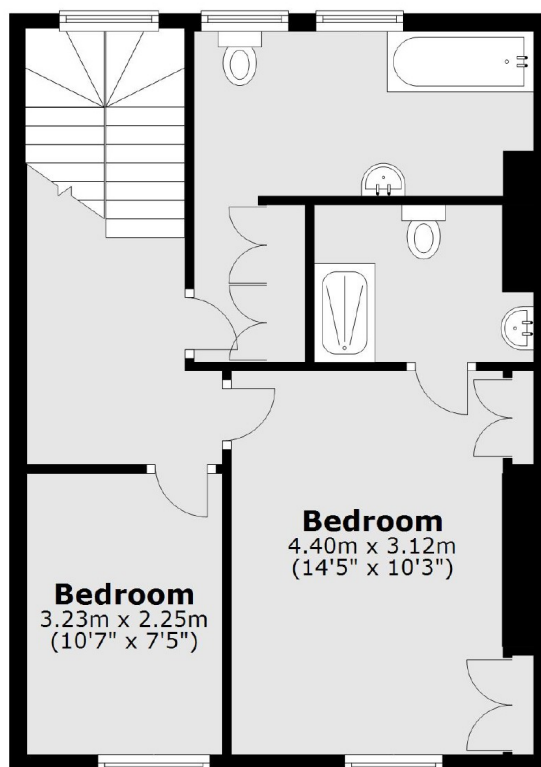
Ground Floor



First Floor



Second Floor



Total area: approx. 97.7 sq. metres (1052.1 sq. feet)